

Julia Kazubowski

Emotional Matter

Designing a Synthetically Charged Reality

Chloe DeMarco

CONTENTS

<i>Framing</i>	03
<i>Unconventional Material Mapping</i>	06
<i>Mapping Emotion</i>	12
<i>Emotion Textures</i>	18
<i>Fusions</i>	26
<i>A New Syntehtic Reality</i>	41
<i>The Value of Ai x Architecture</i>	52

FRAMING

Just as limbo is the state between consciousness and unconsciousness, we ask what lies between the states of imagination and reality. This project engages synthetic intelligences to challenge design and architecture, and reimagine it as a construction of reactive moods. We use Ai as a visual asset to transfer the imagination of the machine into the spaces around us in the form of projections. Through our collaboration with the machine, we unveil the engineered emotional energy that is constantly running through our environments, creating moods like arousal, spine-chilling, zest, and heart-wrenching misery. This method of working with Ai is different from other forms of computation, like Photoshop or Rhino, because Ai is able to share a world with us that we are unfamiliar with and brings its own ideas to the table with its unique imagery. We imagine these moods living and latching onto structures in that in-between state of reality / imagination. This thesis investigates that middle ground (where a new synthetic reality lives) and progressively strips away at the physical constraints machine generated images, like our Delight house, are born with, enough to the point where its qualities breach the computer screen and enter into our world. This center image depicts that breach, showing a singular projection that collapses all this information along the spectrum into a singularity, where computer and human thought are merged. We find a powerful potential in this facet of hyperreality where imagination and reality are inseparable, resulting in the formation of an emotionally charged architectural experience.



REALITY



FUSION



A NEW SYNTHETIC REALITY



EMOTIONAL
TEXTURE



IMAGINATION



MAPPING UNCONVENTIONAL
MATERIALS



MAPPING UNCONVENTIONAL MATERIALS

Before even arriving at this new territory of architecture, we had to first learn about how Ai thinks and uses its imagination to create its own unique worlds. We first tested the Ai's autonomy by mapping unconventional materials onto buildings, creating our Strawberry house, Smoke, Dried Rigatoni, and Sheep Fur houses. We discovered that the machines' autonomous nature enables AI to design without protocol in mind - where the rules of time, space, and physics are not bound by the same limitations as the waking world. When mapping the material onto a new structure, the Ai detached the unconventional material's visual qualities from its physical and structural qualities and appropriated its visual nature, creating a new aesthetic altogether. These iterations were successful specifically because of their nontypical design and their captivating imaginative qualities. The Ai does not allow the physical properties of a material to restrict the architecture in any way. This encourages Architecture to consider other avenues of texture mapping with qualities that might not be completely tangible. Which inspired us to conduct this experiment with emotion as our texture.

MAPPING UNCONVENTIONAL MATERIALS



A house that looks like and has the texture of a *STRAWBERRY*



A house that looks like and has the texture of a *BEEHIVE*



A house that looks like and has the texture of a *BLANKET*



A house that looks like and has the texture of *BUBBLE GUM*



A house that looks like and has the texture of a *BUBBLE WRAP*

MAPPING UNCONVENTIONAL MATERIALS



A house that looks like and has the texture of a *GLASS OF ORANGE JUICE*



A house that looks like and has the texture of a *MUSHROOM*



A house that looks like and has the texture of *SHEEP FUR*



A house that looks like and has the texture of a *PINATA*



A house that looks like and has the texture of *SHEEP FUR*

MAPPING UNCONVENTIONAL MATERIALS



A house that looks like and has the texture of a *PUFF OF SMOKE*



A house that looks like and has the texture of *HAIR*



A house that looks like and has the texture of a *STUFFED ANIMAL*



A house that looks like and has the texture of *SHEEP FLEECE*



A house that looks like and has the texture of *SPAGHETTI*

MAPPING UNCONVENTIONAL MATERIALS



A house that looks like and has the texture of a *STRAWBERRY*



A house that looks like and has the texture of a *BLANKET*



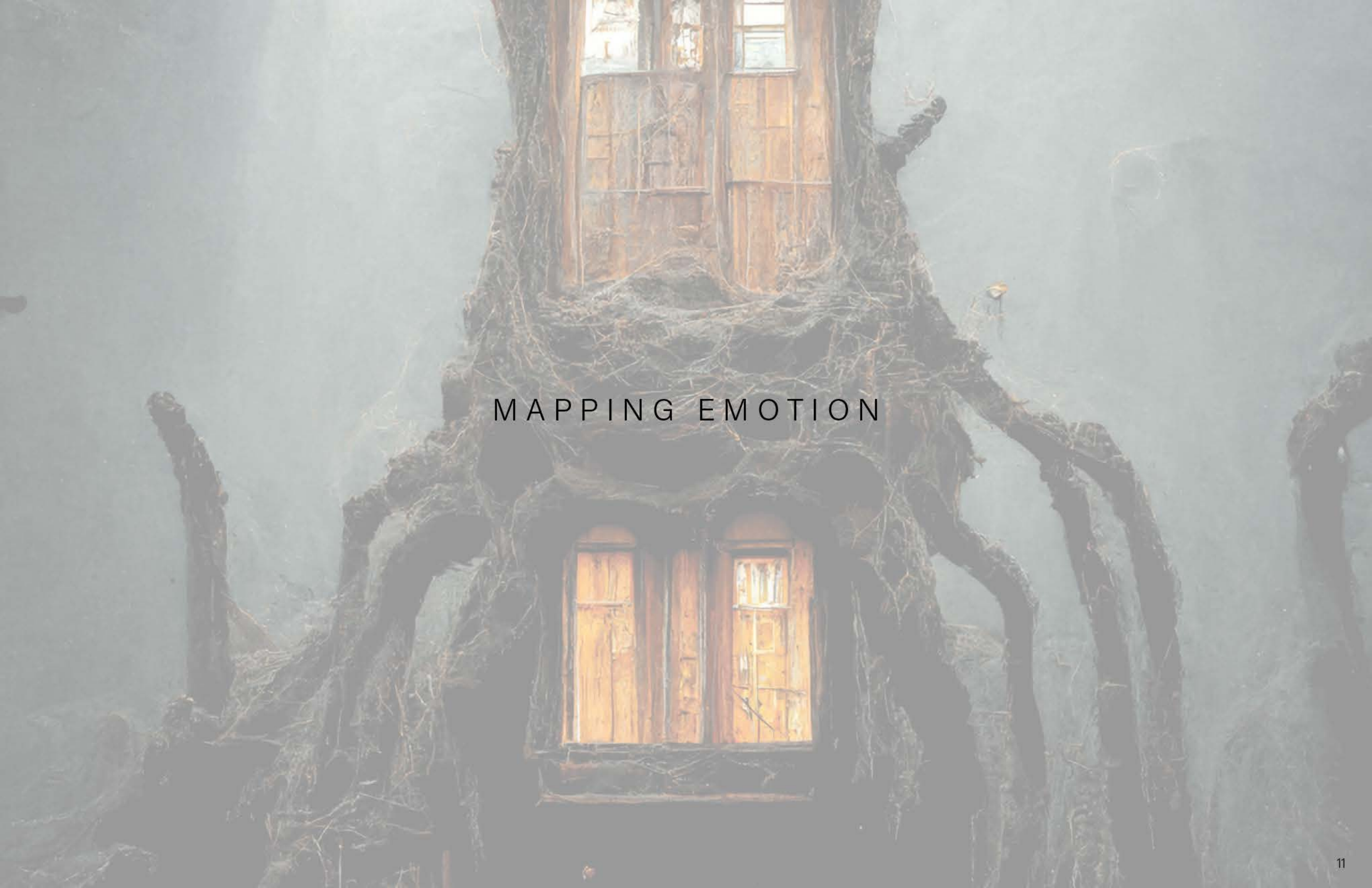
A house that looks like and has the texture of *BUBBLE GUM*



A house that looks like and has the texture of a *BUBBLE WRAP*



A house that looks like and has the texture of *DRIED RIGATONI*



MAPPING EMOTION

MAPPING EMOTION

We ask what it would look like to design a house that exuded delight, embodied spine-chilling, or emulated euphoria. How could a structure wear an emotion as if it was wearing an article of clothing? Through our collaboration with Ai, we created a portfolio of charged houses that each embody a singular emotion, such as zest, euphoria, arousal, and depression. This architecture of emotion uses "houses" as the base structure to map our emotions onto because we are familiar and connected with them naturally. To create this architecture of emotion, we filled our Midjourney prompts with objects that strongly correlated to specific emotions. To control/organize our mood portfolio, we used genres to categorize all our emotions under: Comedy, Drama, Romance, Thriller. Similar to the unconventional material houses, these houses capitalized on the characteristics of the objects in the prompts to create something extraordinary.



DELIGHT

A house that looks like and has the texture of delight, pink door, fluffy sheep fur roof, walls made of field of flowers, and stained glass window



BUBBLY

A house that looks like and has the texture of bubbly, butterfly door, toy roof, candy walls, and bee windows



ZEST

A house that looks like and has the texture of zest, bicycle door, lemon roof, Pool float walls, and playground swing windows



GIDDY

A house that looks like and has the texture of giddy, puffer jacket texture, water slide walls, bubblegum texture windows, sunglasses windows, ball pit roof



SPUNKY

A house that looks like and has the texture of spunky, disco ball wall, feather fluff door, boho clothing walls, wavy colorful beads texture roof



EUPHORIA

A house that looks like and has the texture of euphoria, panoramic mountain door, firework roof, psychedelic walls, and parachute windows



ANXIETY

A house that looks like and has the texture of anxiety, boiling water roof, sweaty hair door, white scratchy chalk door, and ticking clock windows



SPINE-CHILLING

A house that looks like and has the texture of spine-chilling, a hairy door, spider roof, bone walls, and barred windows



INSECURE

A house that looks like and has the texture of nervous, nail bitten walls, quivering insects roof, hair knot door, and claustrophobic closet wall texture



INSIDIOUS

A building that looks like and has the texture of insidious, cracked wood walls, rag doll roof, antique windows, hollow doors



HYSTERIA

A house that looks like and has the texture of hysteria, bruise door, hospital gown roof, artery walls, and needle windows



CONNIVING

A house that looks like and has the texture of conniving, knife walls, ammo texture, shark texture roof

MAPPING EMOTION

ROMANCE



FRISKY

A house that looks like and has the texture of frisky, a spilling red and white wine, walls made of red waterfall walls



SERENITY

A house that looks like and has the texture of serenity, lily pad door, roof made of lavender cucumber, knitted cotton walls, and falling water



SENSATIONAL

A building that looks like and has the texture of sensational, gin and tonic windows, disco ball walls, firework roof, spark door



AROUSAL

A building that looks like and has the texture of arousal, walls made of silk bedding, roof made of chains and latex, lace windows and red door



PEACEFUL

A house that looks like and has the texture of peaceful, pink and white dove feather walls



TENDER

A building that looks like and has the texture of tender, teddy bear roof, chocolate walls, blanket door, candle lit windows



DEPRESSION

A house that looks like and has the texture of depression, cracked concrete walls, tissue roof, tear windows, cloudy door



HEART WRENCHING MISERY

A house that looks like and has the texture of heart-wrenching misery, walls that look like a soggy blanket, roof that looks like a damp tissue, door made of ripped up photos, roof that looks like a soggy blanket, and broken abandoned windows



POWERFUL

a building that looks like and has the texture of powerful, tornado roof, hurricane windy windows, weather structure door, strong brick walls



GREEDY

A house that looks like and has the texture of greedy, coin and dollar bill walls, check roof, money floors



BREATHTAKING

A building that looks like and has the texture of breathtaking, sandy walls, wave roof, crystal windows, and sunny door



INSECURE

A house that looks like and has the texture of insecure, broken glass walls and window, abandoned landscape, cracked roof



EMOTION TEXTURES

EMOTION TEXTURES

These houses are activated bodies with a charged anatomy and to further understand their ebb and flow, we zoomed in on specific clusters to examine their synthetic build. We took each cropped image and ran it through Midjourney alongside a supplementary prompt that reiterated the emotion, and states that we are zooming in. For all the textures, we wanted the generated output to look as if we took a magnifying glass to the house and saw the hyper detailed zoomed in materials that are forming the structure. For example we zoom in on the delight house at a cellular level and the resulting microscopic view captures the objects in the prompt at a smaller hyper detailed scale, ultimately decoding the emotional genetic properties. The ambition was to create a texture for each house, each with individual properties. Just like a fingerprint is a genetic pattern used to identify an individual, these textures are representative of a larger distinctive body.

CREATING AN EMOTIONAL TEXTURE

PART 01



DEPRESSION HOUSE

A house that looks like and has the texture of depression, cracked concrete walls, tissue roof, tear windows, cloudy door

PART 02



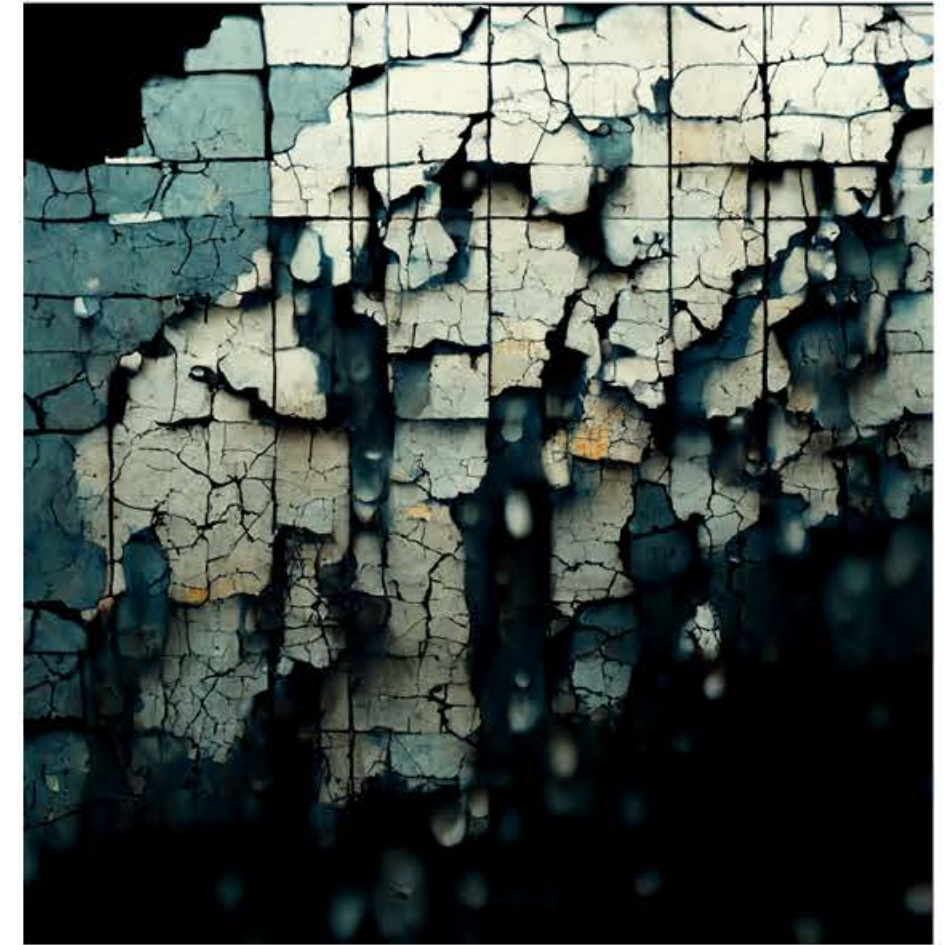
ZOOMED IN CROPPED IMAGE

+

MIDJOURNEY PROMPT:

A zoomed in detailed texture that looks like and has the texture of depression, cracked concrete, tissue, tear, cloudy

PART 03



DEPRESSION TEXTURE

CREATING AN EMOTIONAL TEXTURE

PART 01



DELIGHT HOUSE

A house that looks like and has the texture of delight, pink door, fluffy sheep fur, walls made of field of flowers, and stained glass

PART 02



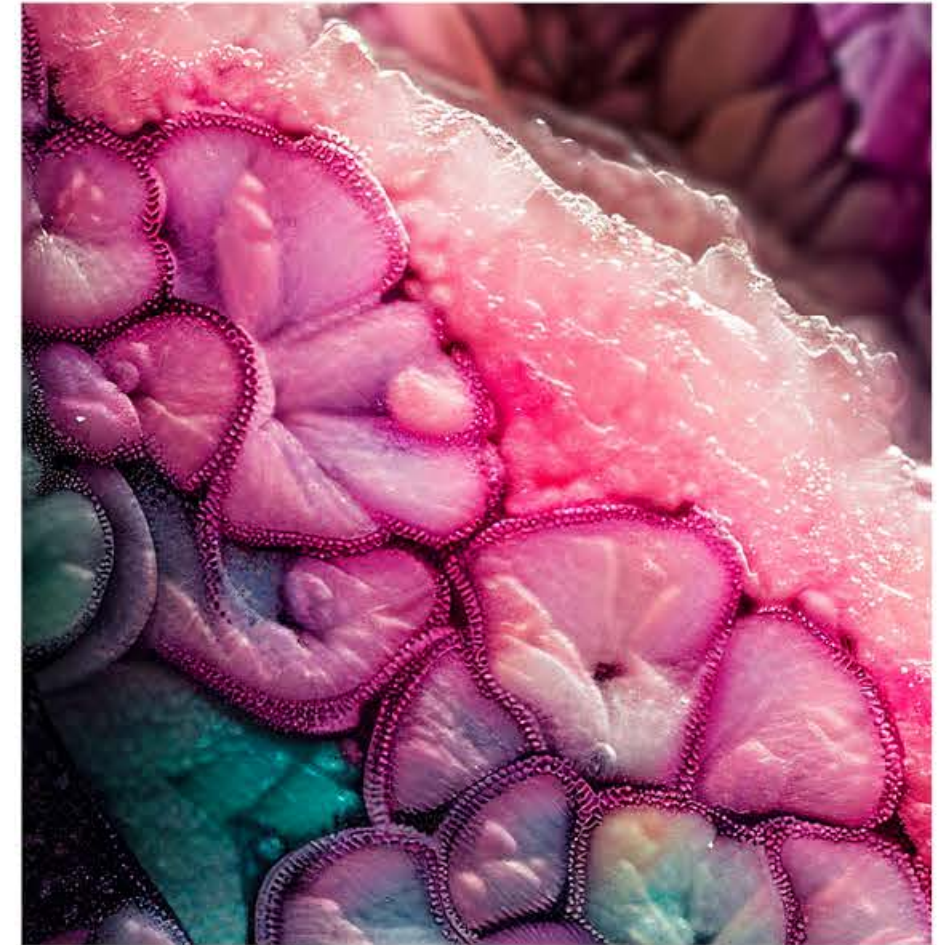
ZOOMED IN CROPPED IMAGE

+

MIDJOURNEY PROMPT:

A zoomed in detailed texture that looks like and has the texture of delight, pink, fluffy sheep fur, field of flowers, and stained glass

PART 03



DELIGHT TEXTURE

EMOTIONAL TEXTURES



DELIGHT



SPUNKY



GIDDY



ZEST



EUPHORIA



BUBBLY

EMOTIONAL TEXTURES



ANXIETY



CONNIVING



HYSTERIA



NERVOUS



INSIDIOUS

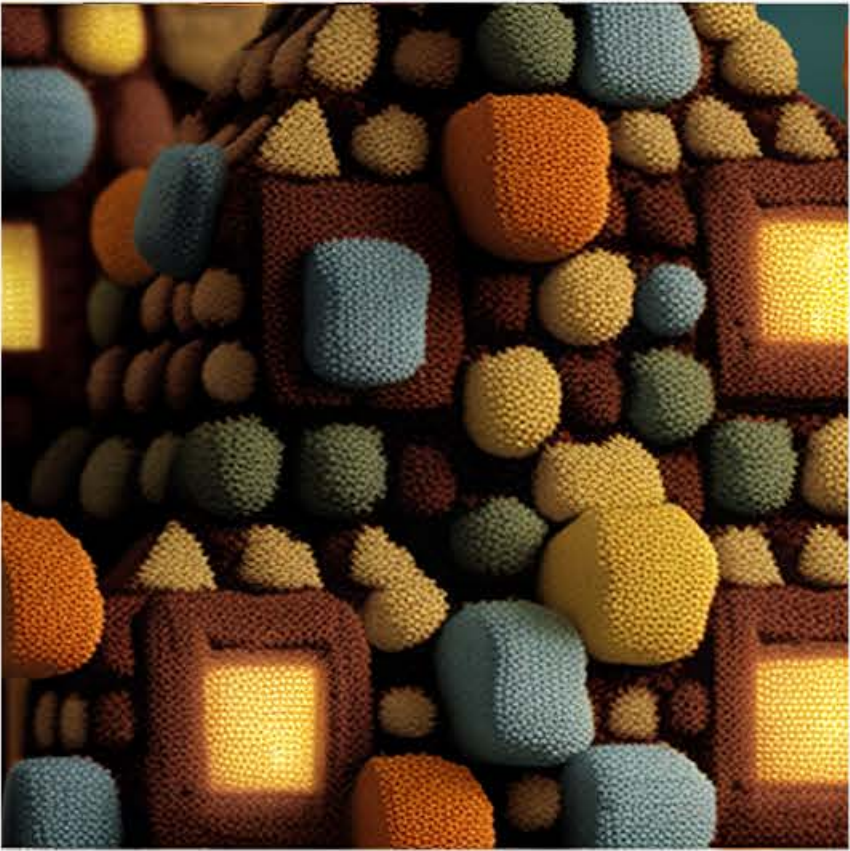


SPINE-CHILLING

EMOTIONAL TEXTURES



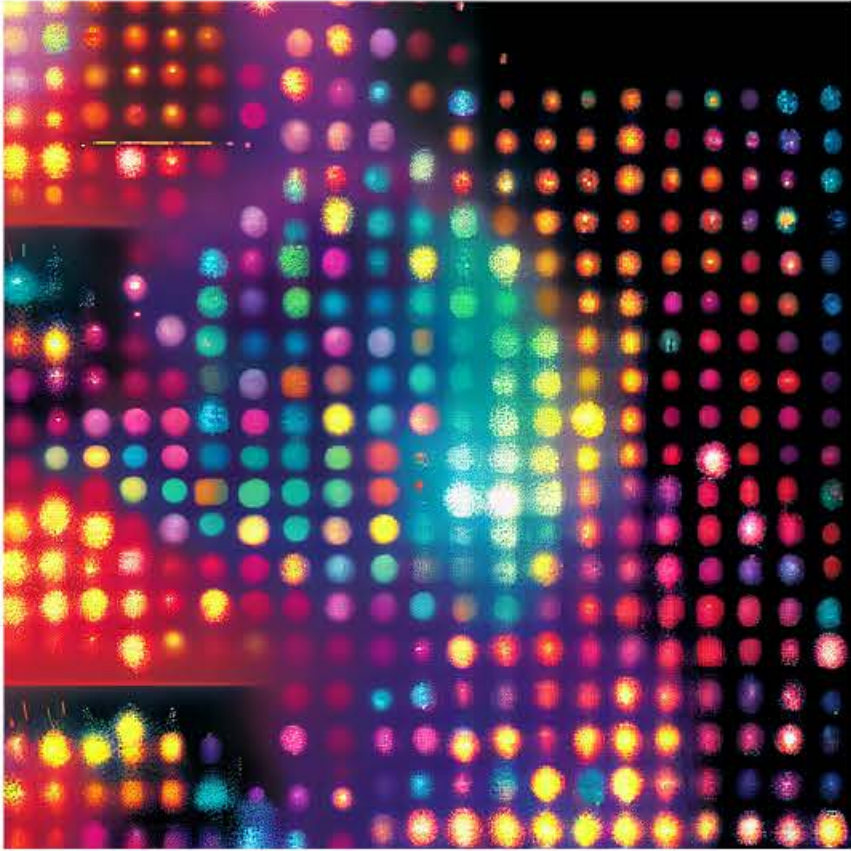
AROUSAL



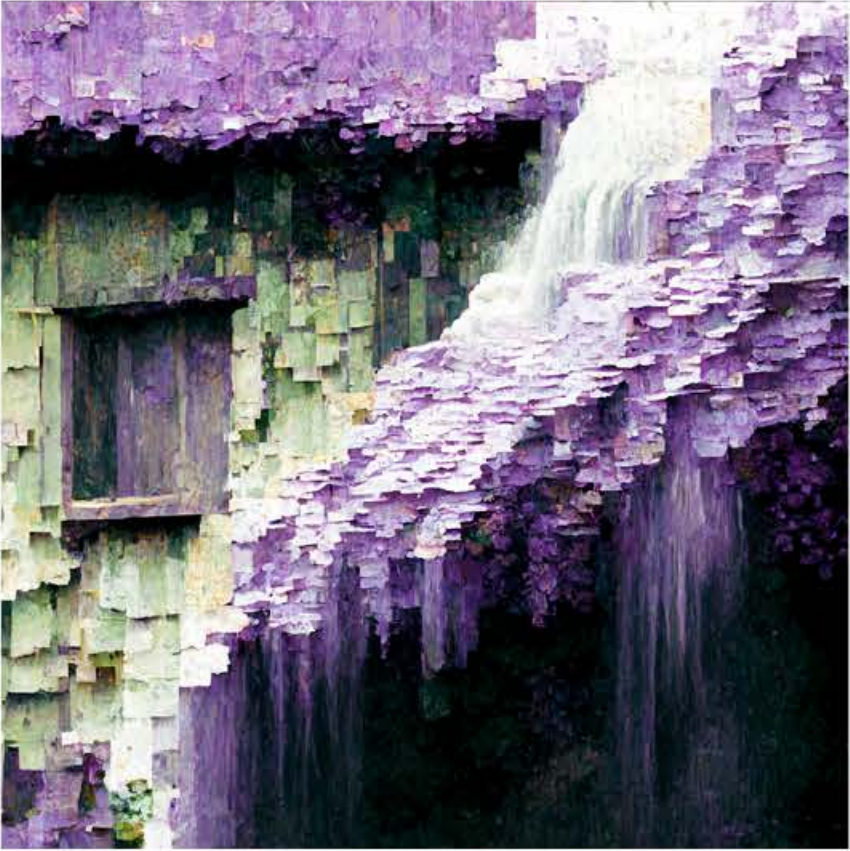
TENDER



PEACEFUL



SENSATIONAL



SERENITY



FRISKY

EMOTIONAL TEXTURES



BREATHTAKING



HEART WRENCHING MISERY



GREEDY



DEPRESSION



POWERFUL



INSECURE



FUSIONS

Where Reality Meets Imagination

FUSIONS

We then wanted to take these synthetic patterns/materials and introduce them to our surrounding world, our walls, floors, ceilings, even our outlets. To do this, we used our own photographs of the spaces around us and used Ai to surgically stitch them with the emotional patterns to create a new hybrid form. For example this singular fusion takes the anxiety pattern (which is the extraordinary), a photograph of our dining room wall (which is the ordinary) and using Midjourney's blend tool, we made these two totally different compositions one living being. This fusion takes 3 separate emotional textures (depression, serenity, and delight), a photograph of the slocum elevator, and spewed out this new concoction of psychological and architectural matter that seamlessly mixes all 3 emotions together into a new architectural fabric that grew off the ordinary elevator's qualities, as if it was altering its structural DNA. This process all started when we were sitting at home staring at our dining room wall and questioned what this wall would look like if it could emote and be just as reactive as us. Midjourney's Ai was the perfect tool in carrying out this experiment because its capable of taking ordinary elements (like this wall) and removing any human logic / constraints that would've otherwise informed design decisions and rather works off just it's shape/form. For example when we created these outlet fusions, the Ai's intelligence only goes so far and did not recognize the outlet as a power source but rather just a box in space. The Ai spots this form and uses the opportunity to link the ordinary's shape/form with the emotional material.

We went to the Marble Room to let these textures run wild on a more extraordinary surface - its marble walls, floors, and fixtures. What we found in each iteration was the emotional texture binding to the marble, engaging with its properties, as we see the marble morph, curve, and weave with the emotional textures, creating an alternative mixture of materials, where we cannot tell where the ai starts and reality begins. We did this in a range of spaces such as the bathroom, Auditorium, Elevator, and Room 402. All of these studies/fusions are of value because this is the first time we see synthetic imagination breaching into our reality and it's infiltration is able to naturally transform / morph our familiar structures. These Midjourney fusions act as a sort of x-ray that reveals this new layer within the surface of the ordinary and shows that it's not as banal as we might've thought but is rather full of reactive emotional matter. These images, where imagination and reality meet, start to inch closer to that middle ground we are trying to tap into - a new synthetic reality

FUSING THE ORDINARY WITH THE EXTRAORDINARY

Single Fusion

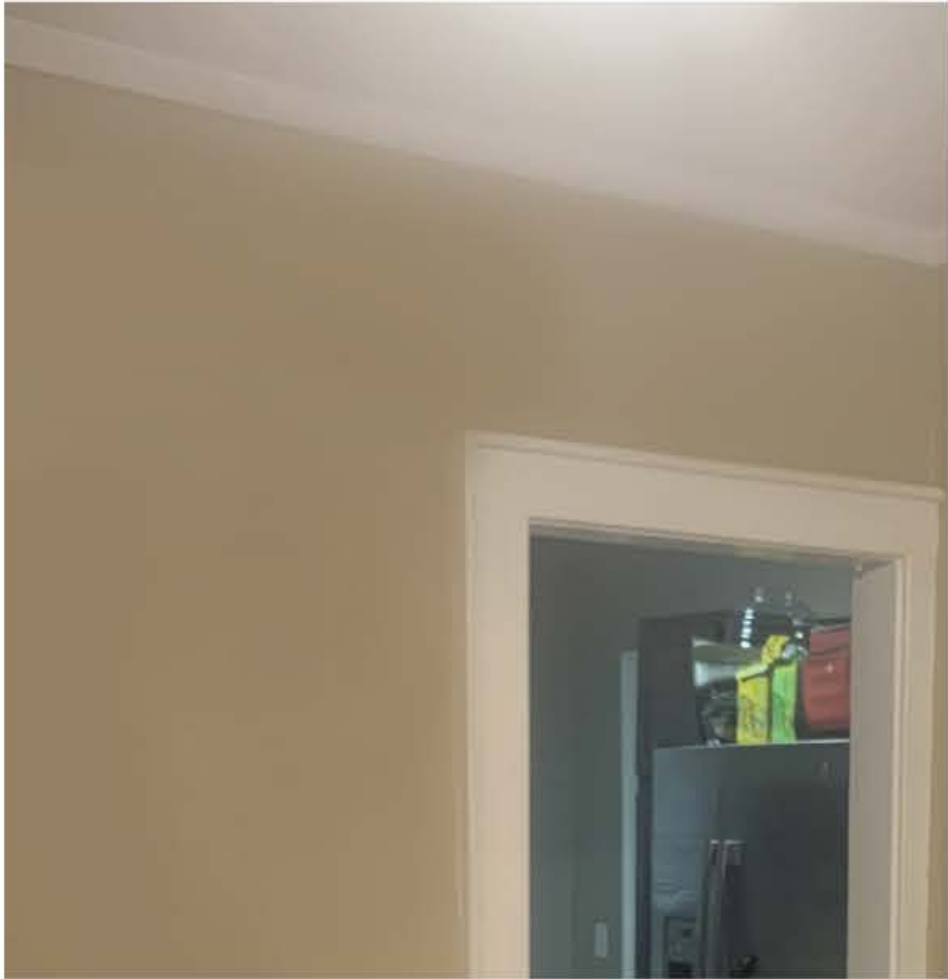
THE EXTRAORDINARY



ANXIETY TEXTURE

+

THE ORDINARY



PHOTOGRAPH OF OUR DINNING ROOM WALL

AN EMOTIONAL FUSION



AN ANXIOUS WALL

FUSING THE ORDINARY WITH THE EXTRAORDINARY

Triple Fusion

THE EXTRAORDINARY



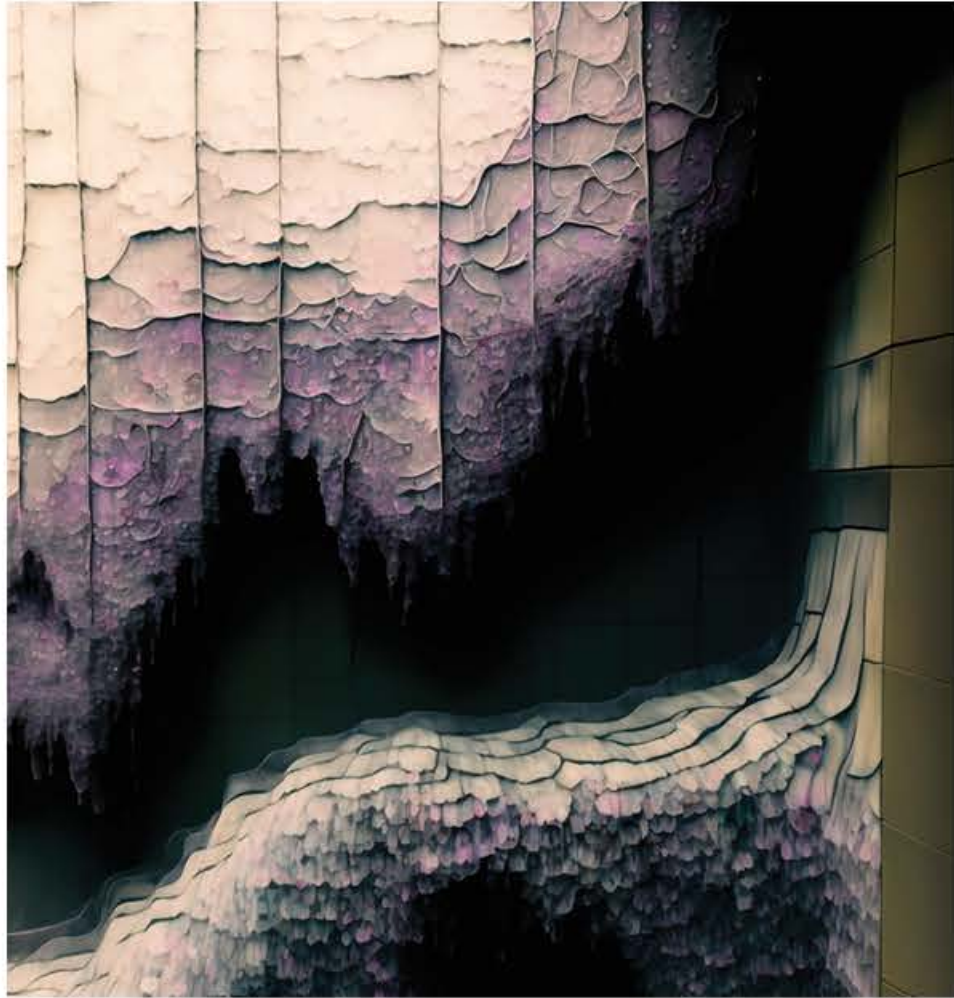
DEPRESSION + SERENITY + DELIGHT TEXTURE

THE ORDINARY



PHOTOGRAPH OF SLOCUM ELEVATOR

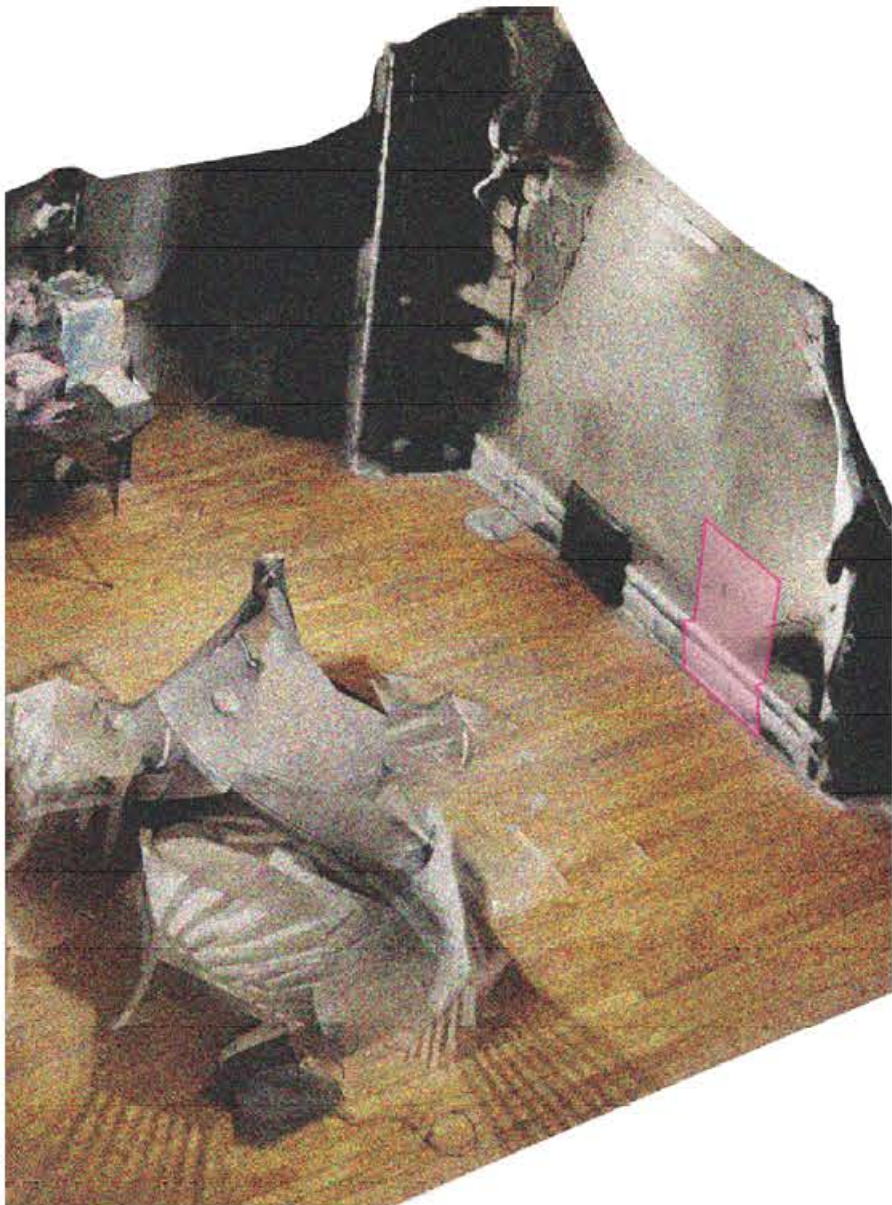
AN EMOTIONAL FUSION



A DEPRESSED, SERENE, & DELIGHTED ELEVATOR

FUSING THE ORDINARY WITH THE EXTRAORDINARY

Dinning Room



THE EXTRAORDINARY



A wall feeling sensation

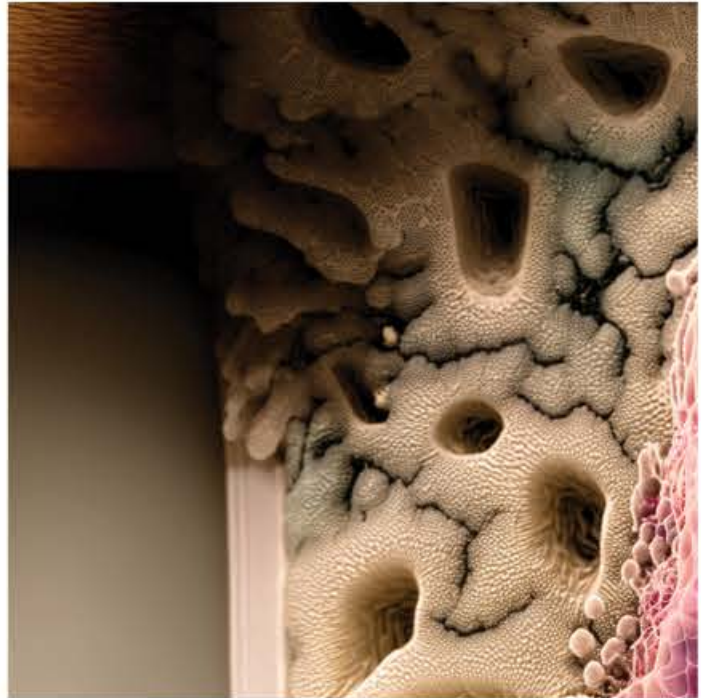


A wall feeling hysteria



An aroused wall

THE ORDINARY



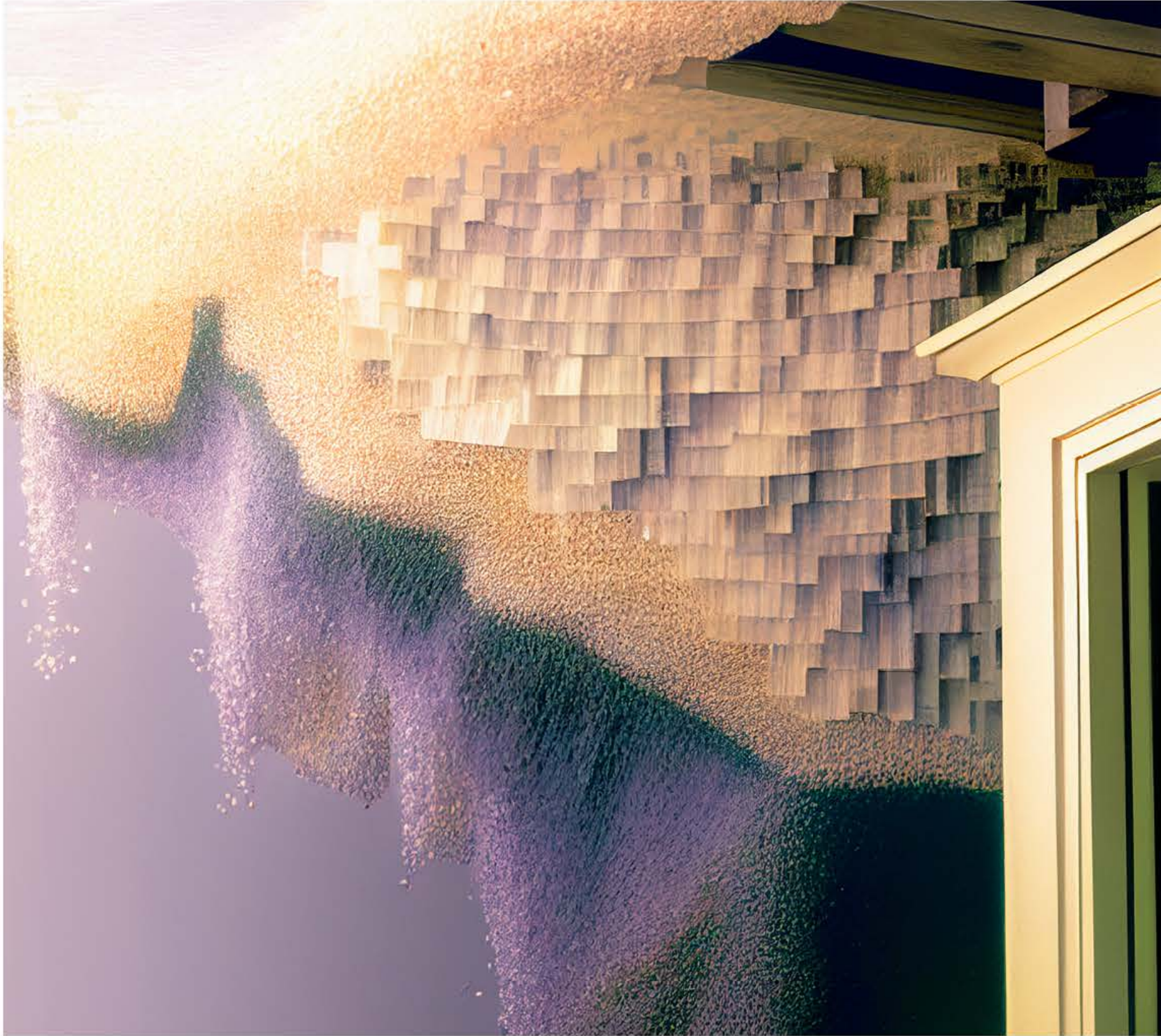
A nervous + delighted wall



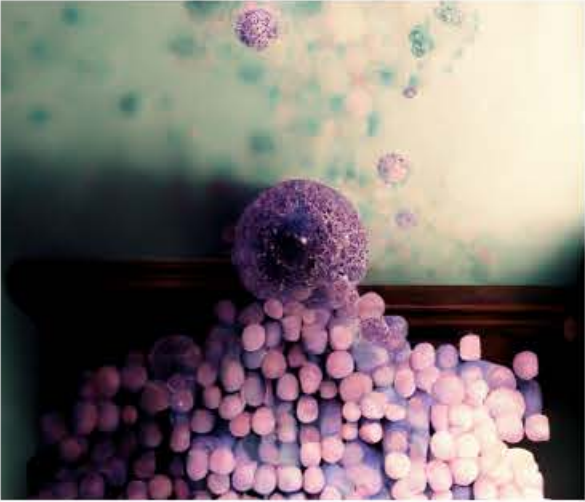
An aroused + depressed wall

FUSING THE ORDINARY WITH THE EXTRAORDINARY

Dinning Room



A serene + breathtaking wall



A giddy + serene fan



A nervous trim



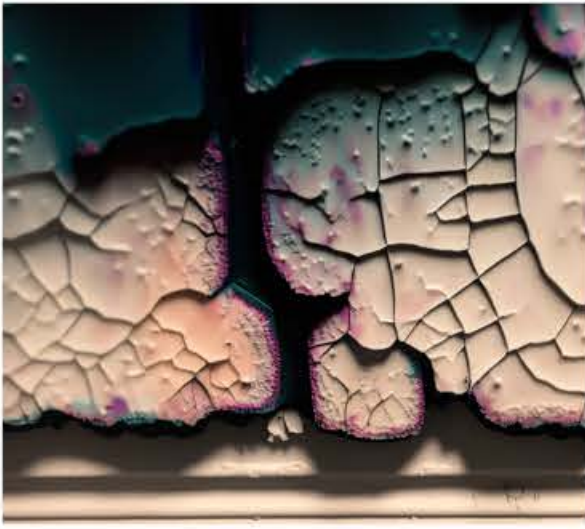
A delight fan



A frisky trim



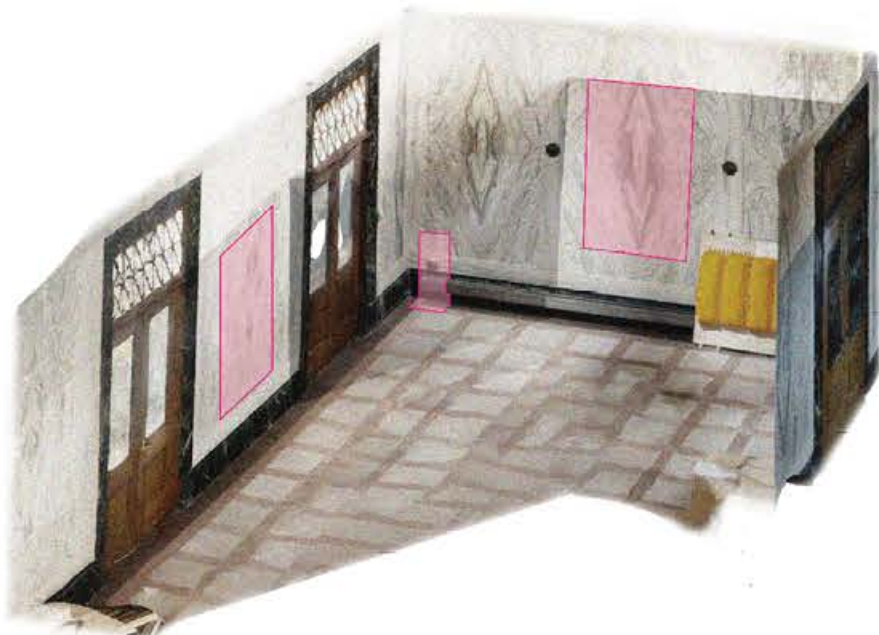
A spunky outlet



A depressed + delighted outlet

FUSING THE ORDINARY WITH THE EXTRAORDINARY

Marble Room



An anxious marble wall



An aroused marble wall



A zesty marble wall

THE ORDINARY



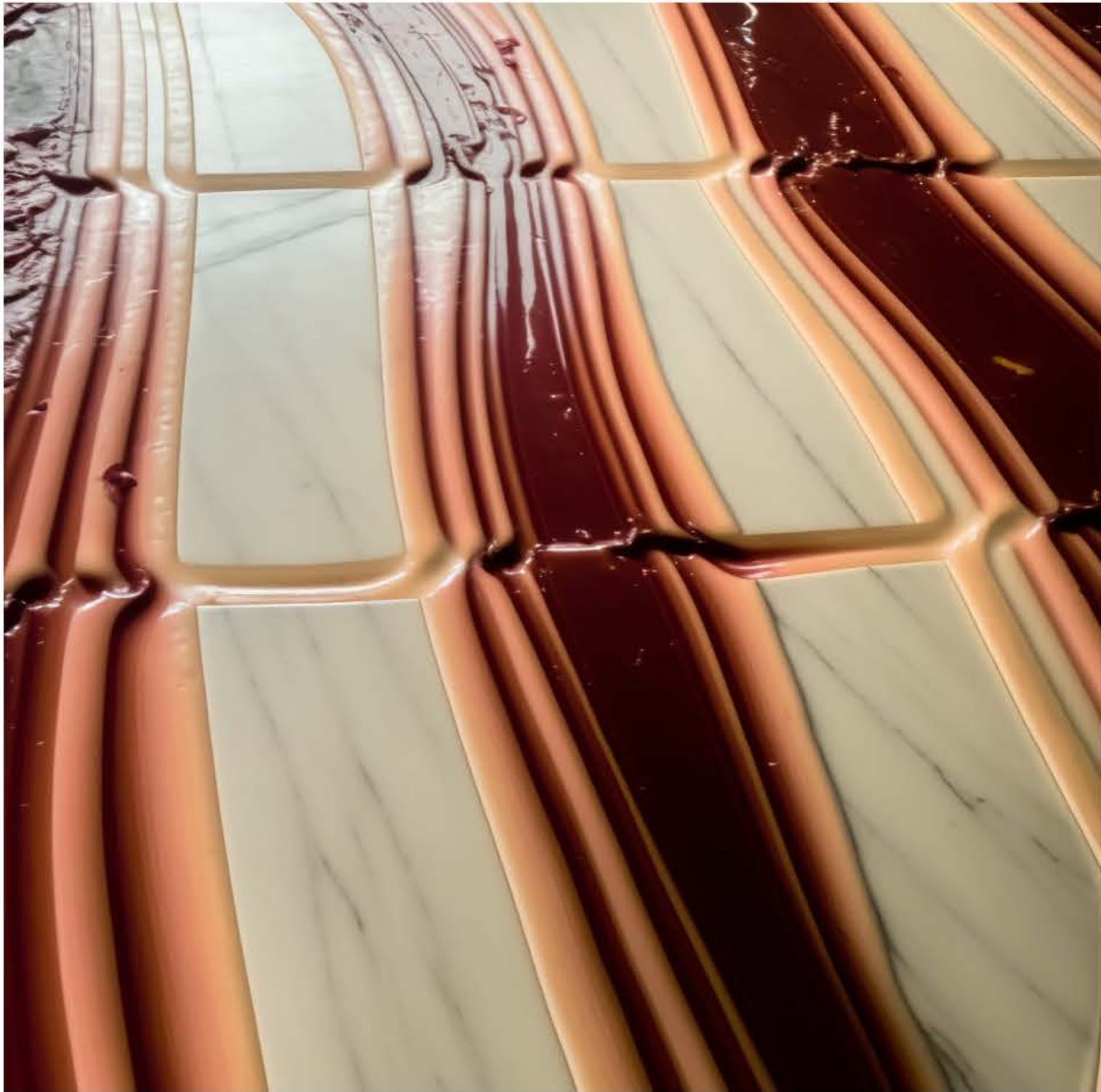
A delighted + anxious marble wall



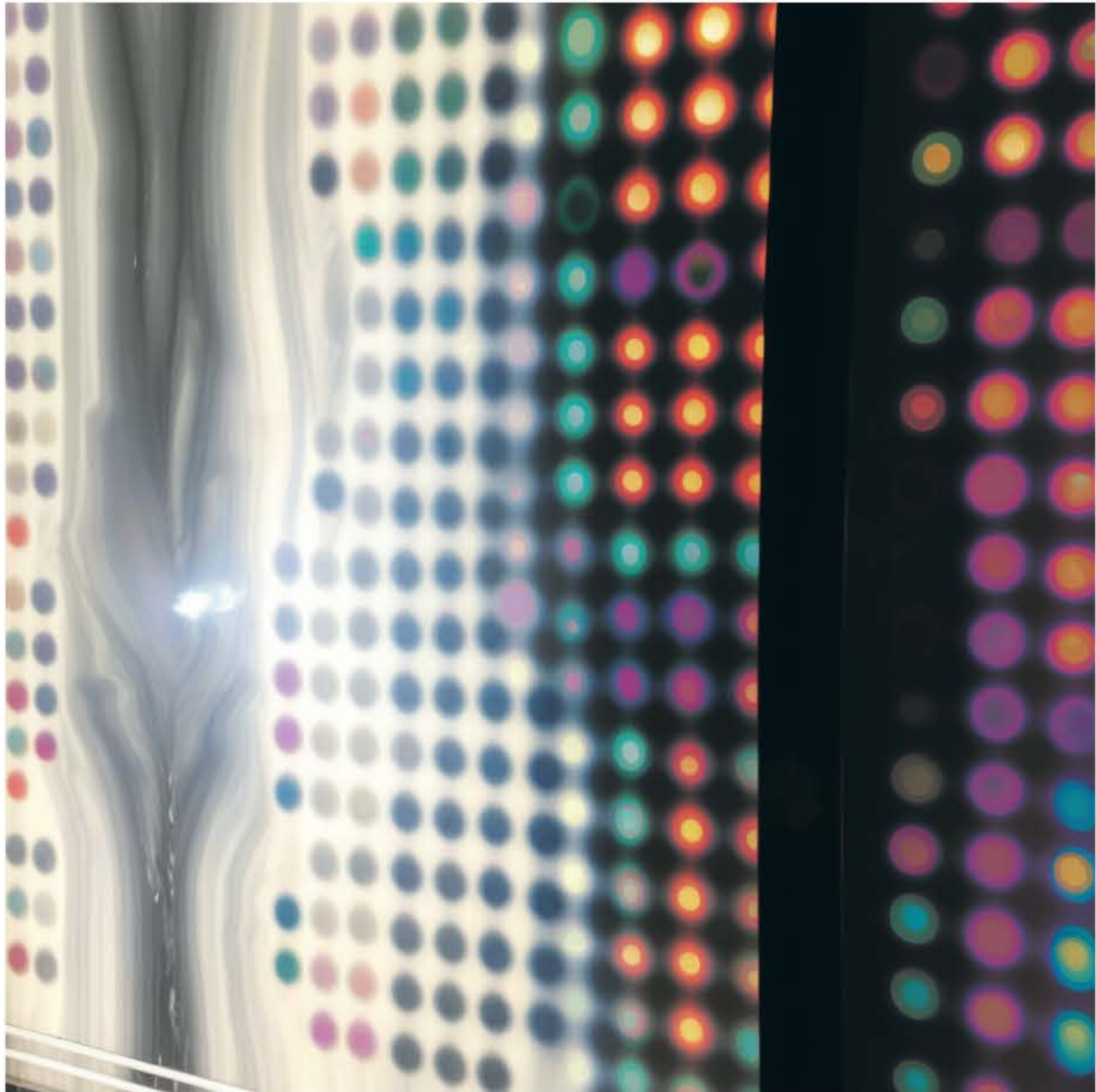
A depressed marble wall

FUSING THE ORDINARY WITH THE EXTRAORDINARY

Marble Room



A frisky marble floor



A sensational marble wall

FUSING THE ORDINARY WITH THE EXTRAORDINARY

Marble Room



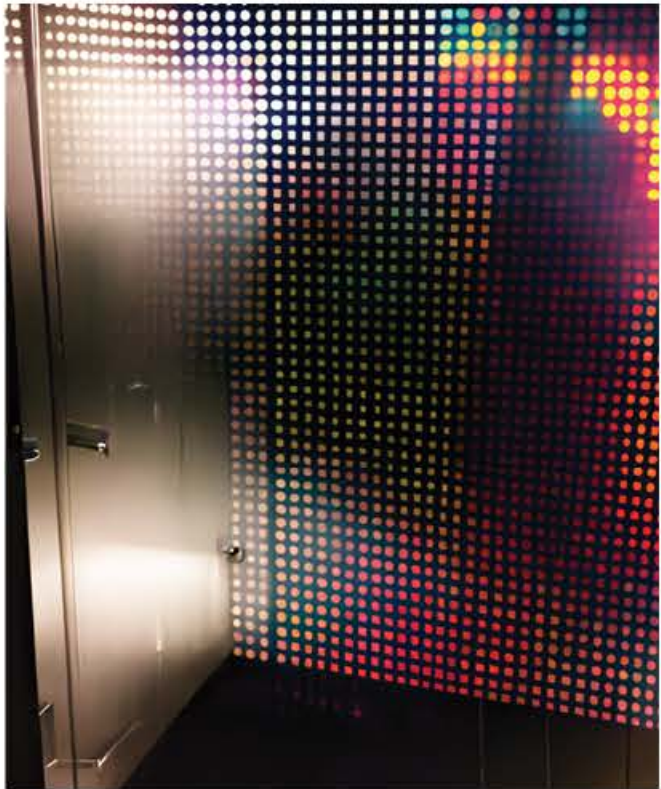
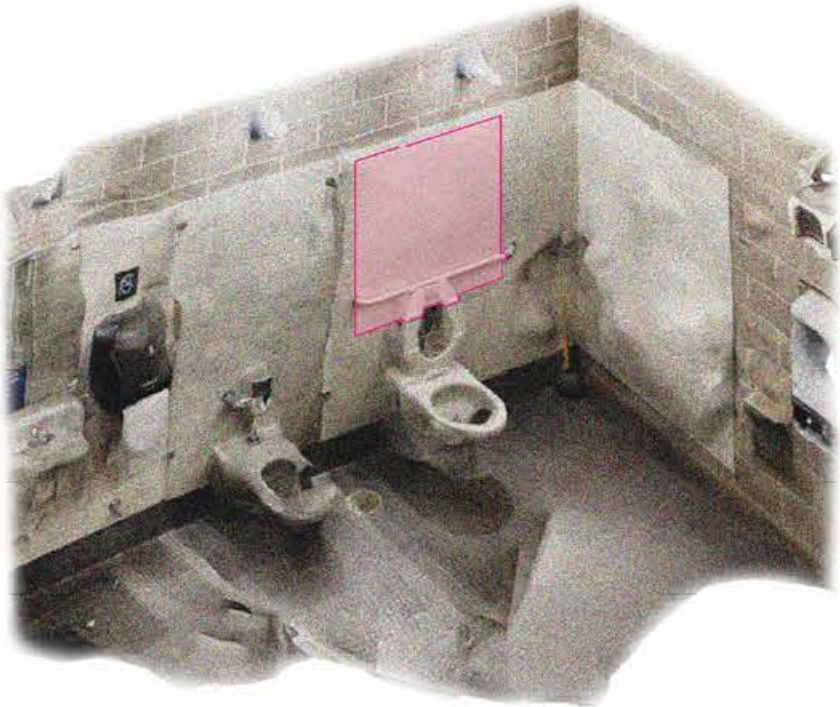
A serene marble floor



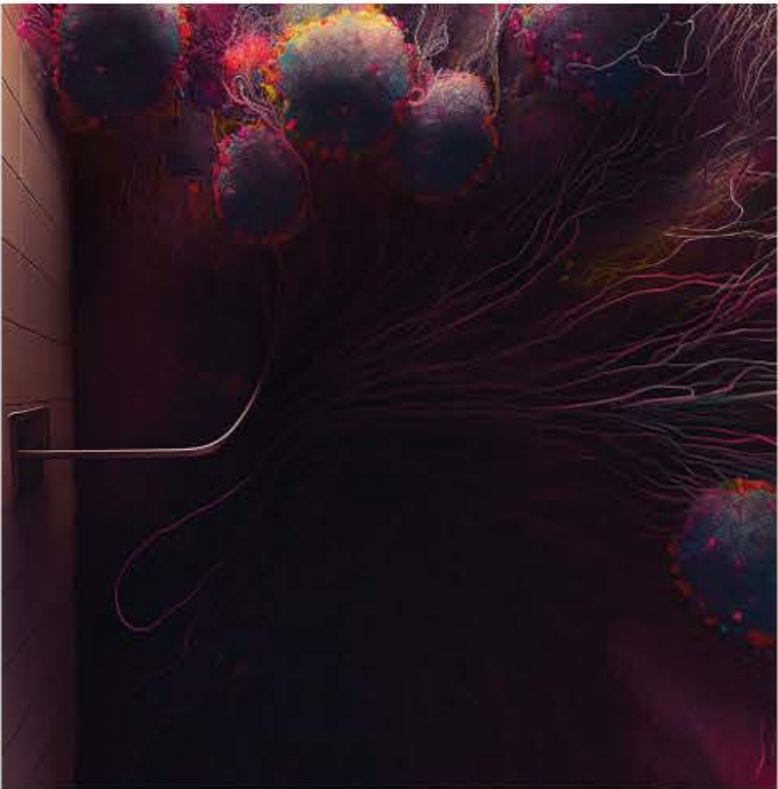
A euphoric marble wall

FUSING THE ORDINARY WITH THE EXTRAORDINARY

Slocum Bathroom



A sensational bathroom stall



A euphoric bathroom stall



A depressed bathroom tile

THE ORDINARY



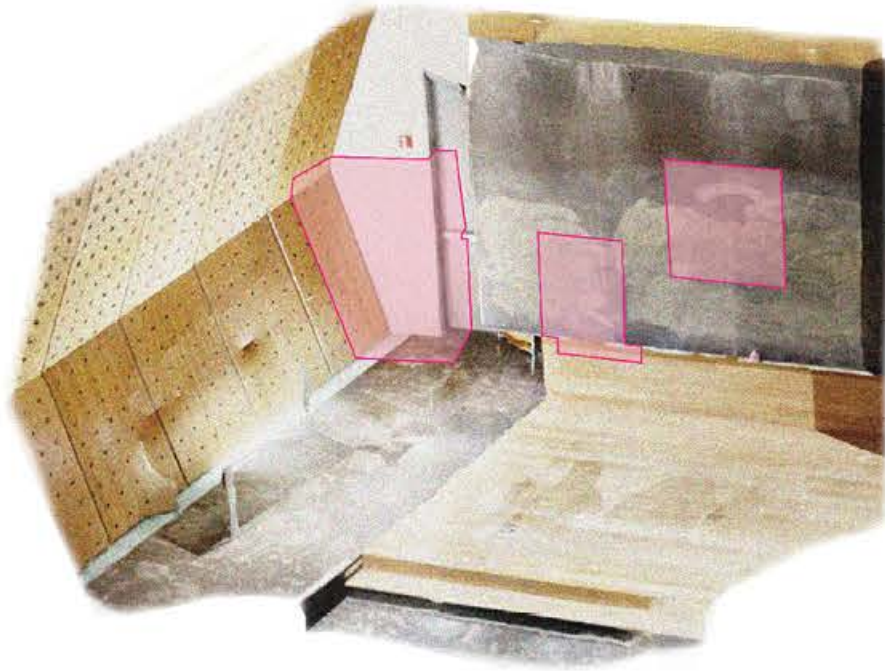
An anxious bathroom stall



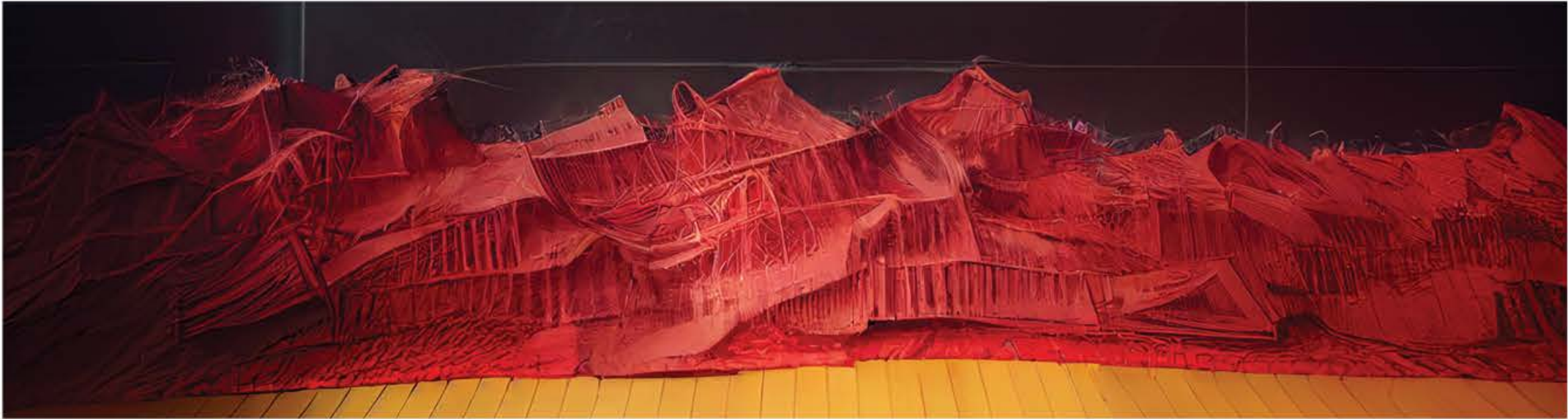
A bubbly bathroom stall

FUSING THE ORDINARY WITH THE EXTRAORDINARY

Slocum Auditorium



A zesty stage

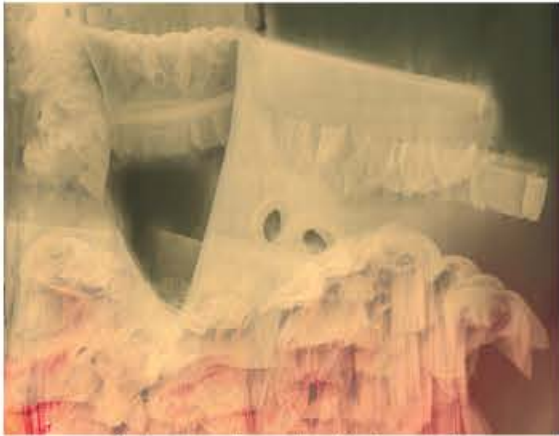


An aroused stage

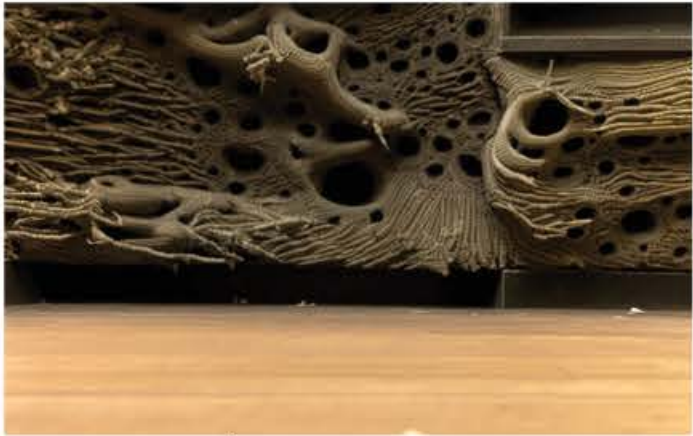
THE ORDINARY



A delighted chalk board



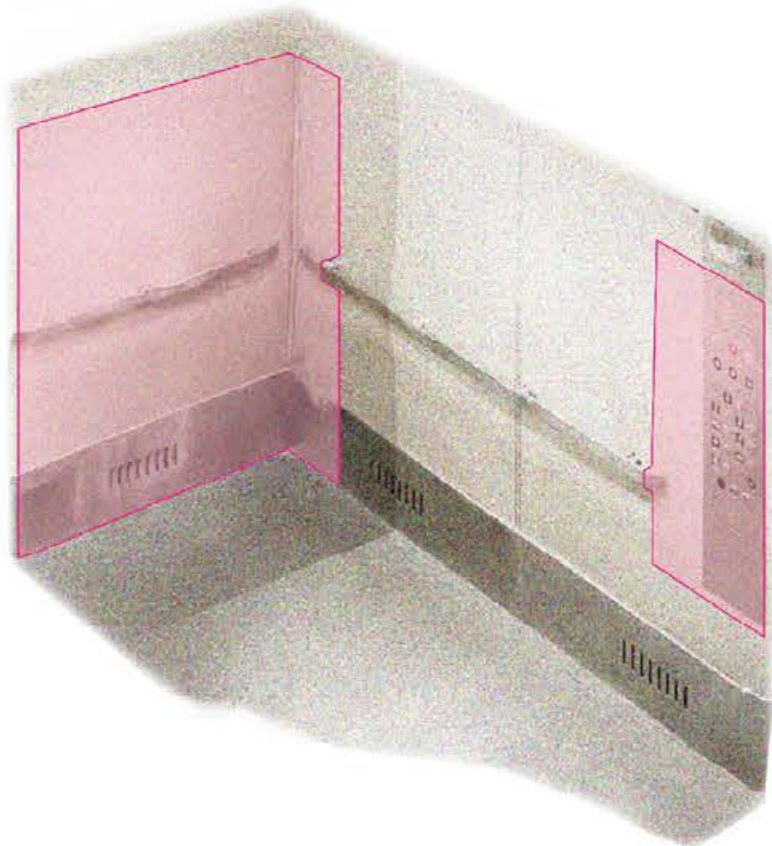
A hysteric chalk board



A nervous stage

FUSING THE ORDINARY WITH THE EXTRAORDINARY

Slocum Elevator



THE ORDINARY



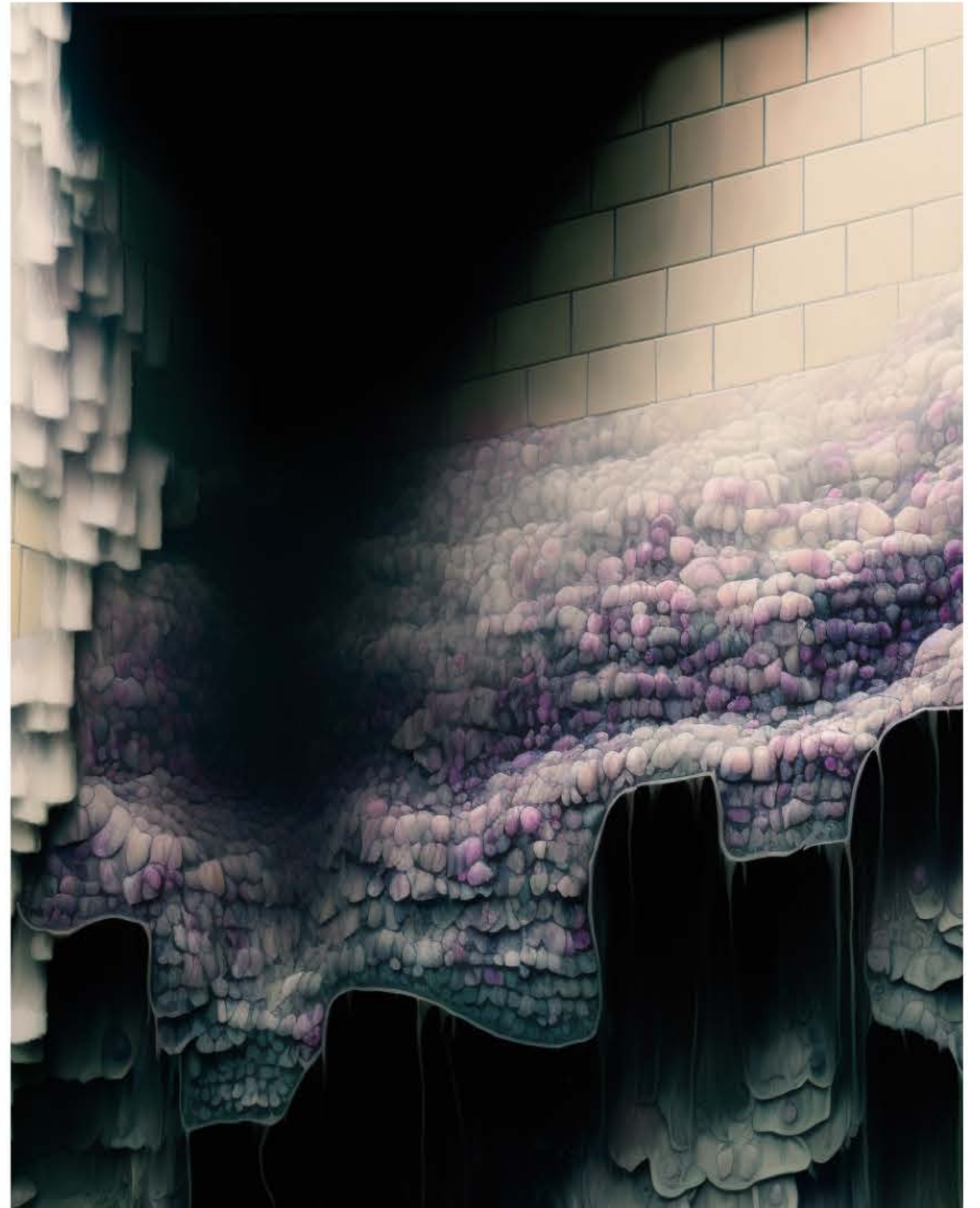
A bubbly bathroom stall



Heart Wrenching Misery elevator door



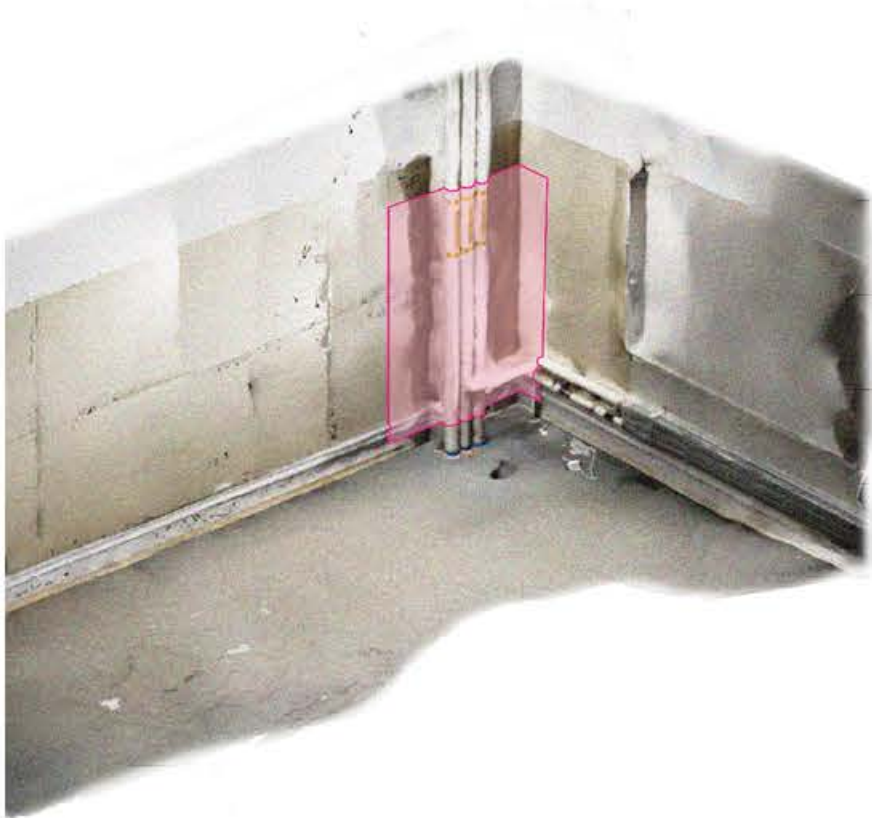
Hysteric elevator buttons



A serene, depressed, & delighted elevator

FUSING THE ORDINARY WITH THE EXTRAORDINARY

Room 402



Frisky Pipes



Hysteric pipes and wall

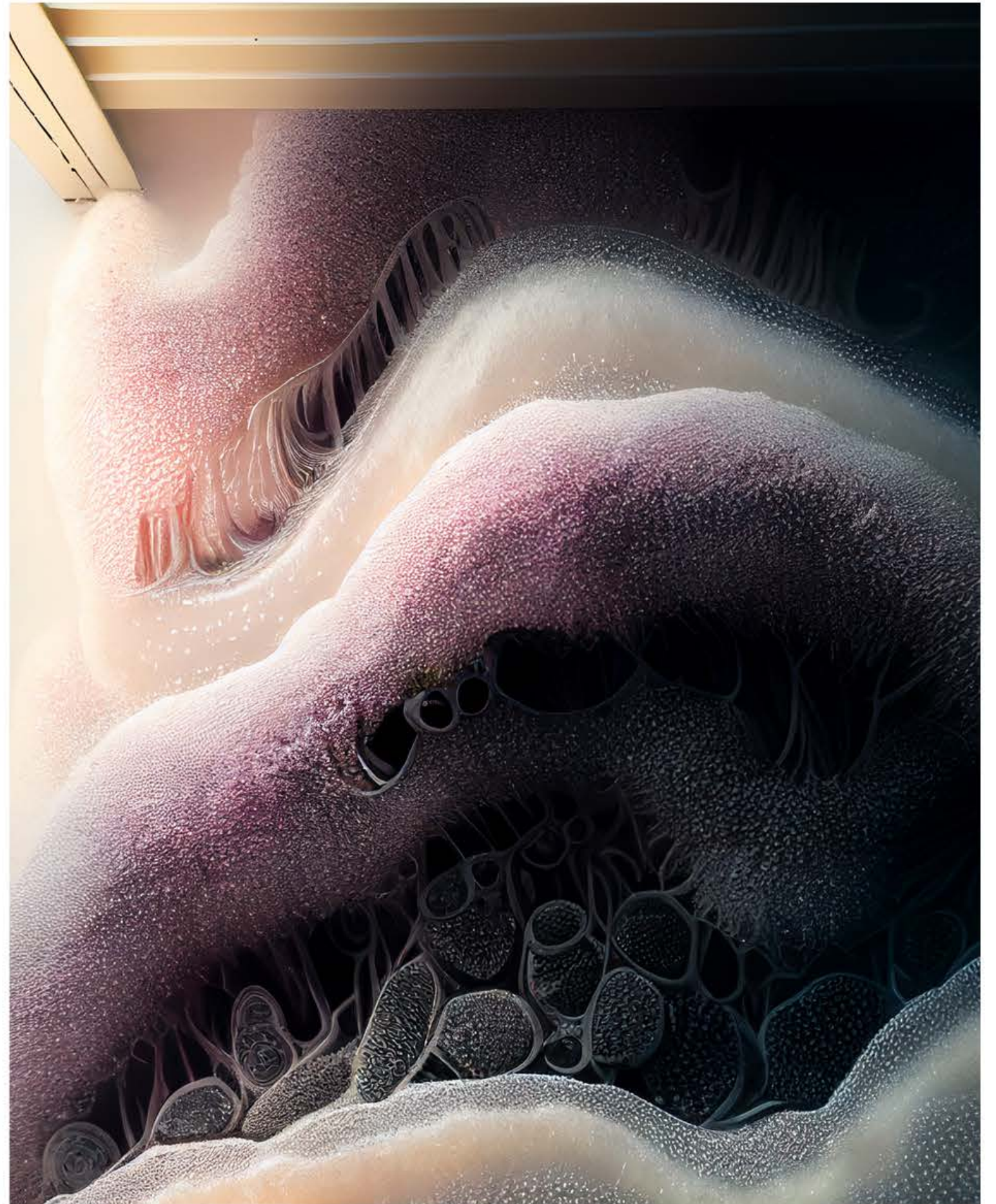
THE ORDINARY



Breathtaking + Delight Wall



Delight outlet



Anxiety + Breathtaking + Giddy ceiling

A photograph of a window with pink curtains. The curtains are pulled back, revealing a view of a road or street. The text "A NEW SYNTHETIC REALITY" is overlaid in the center of the image.

A NEW SYNTHETIC REALITY

A NEW SYNTHETIC REALITY

We then entered a new phase where we took these fusions out of the digital screen, away from its pixel constraint, and introduced it into the physical world. We took the digital fusions, projecting them into the original spaces we initially captured. By projecting, the emotional textures now have an additional host to interact with - the physical world. Each physical landscape, banal or extraordinary, has its own set of qualities. For example, the marble is a detailed pattern, contrasting or complementary pattern, the darker portions fade, creating a blend, breaking the bounding box of the projector. The auditorium walls, the grain and angle of the wood interpret the images in new ways, layer of old etching and smudges in blackboard, The bathroom walls superimposed grid and the stalls reflective surface. The elevator buttons are at two scales, making reality questionable. Room lighting also introduces another level of unpredictability. Overall, we are not just projecting on nothingness, everything we project onto has its own history and attitude. Furthermore, if we look around, Projections in the room are transforming the banal surroundings into a stimulation of the imagination inside our reality. It shows the extended pallet of possibilities in using AI imaging techniques that create and manipulate familiar ordinary objects and walls into exotic assemblies of pixelated matter, perplexing the mind and the conscience.

FUSION



DELIGHTFUL PIPES

PROCESS

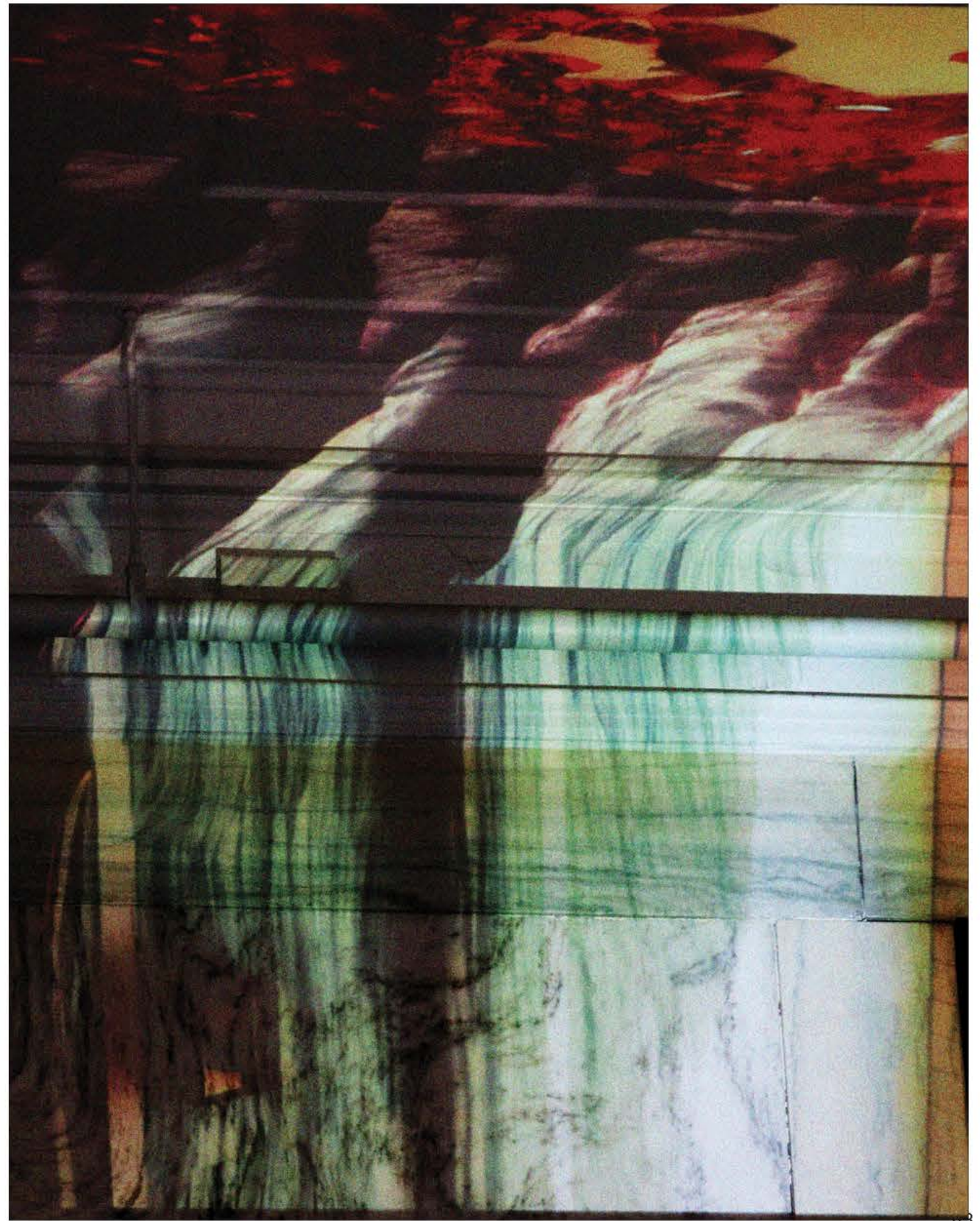


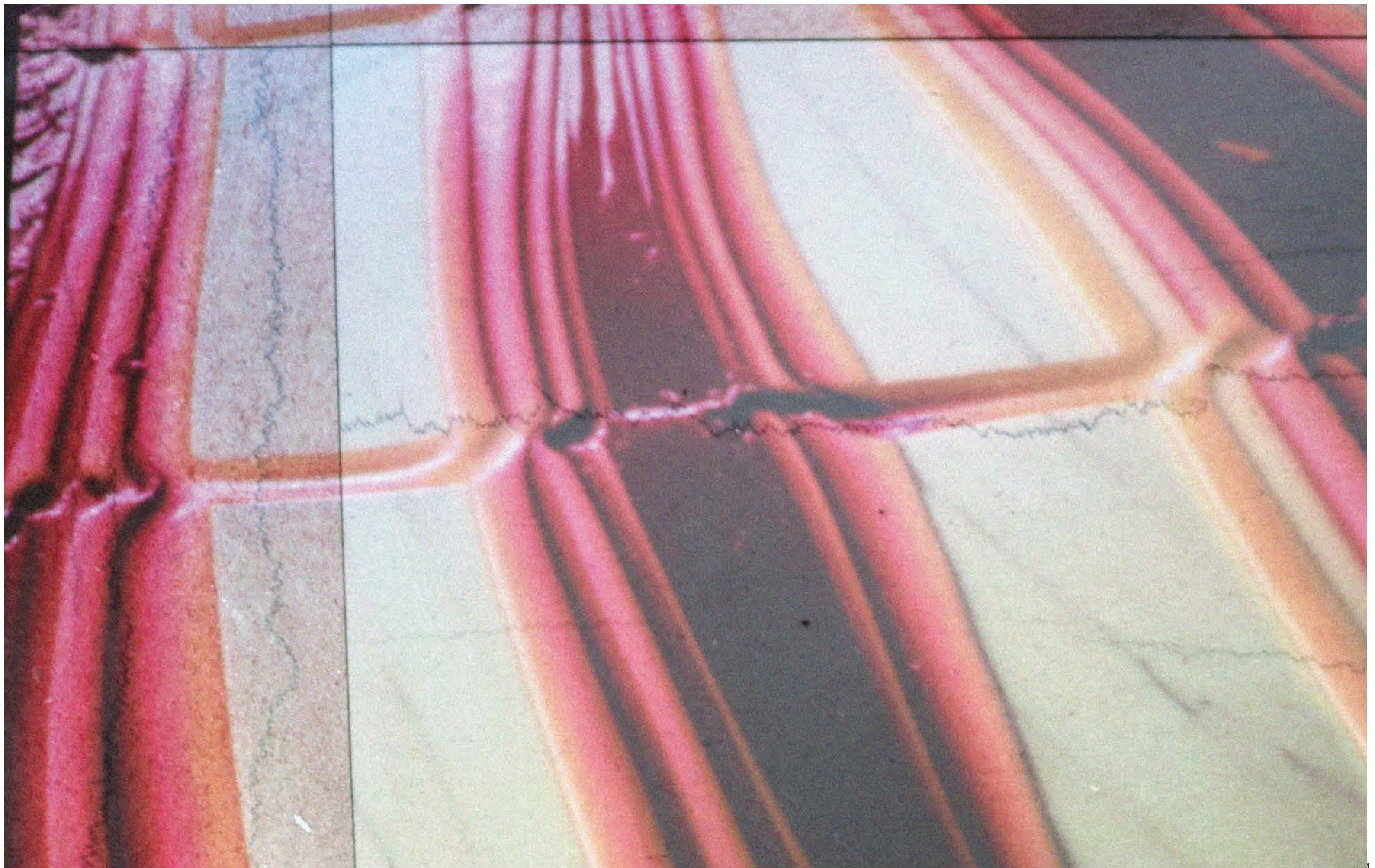
PROJECTING BACK ONTO THE ORIGINAL SURFACE

PHOTOGRAPH

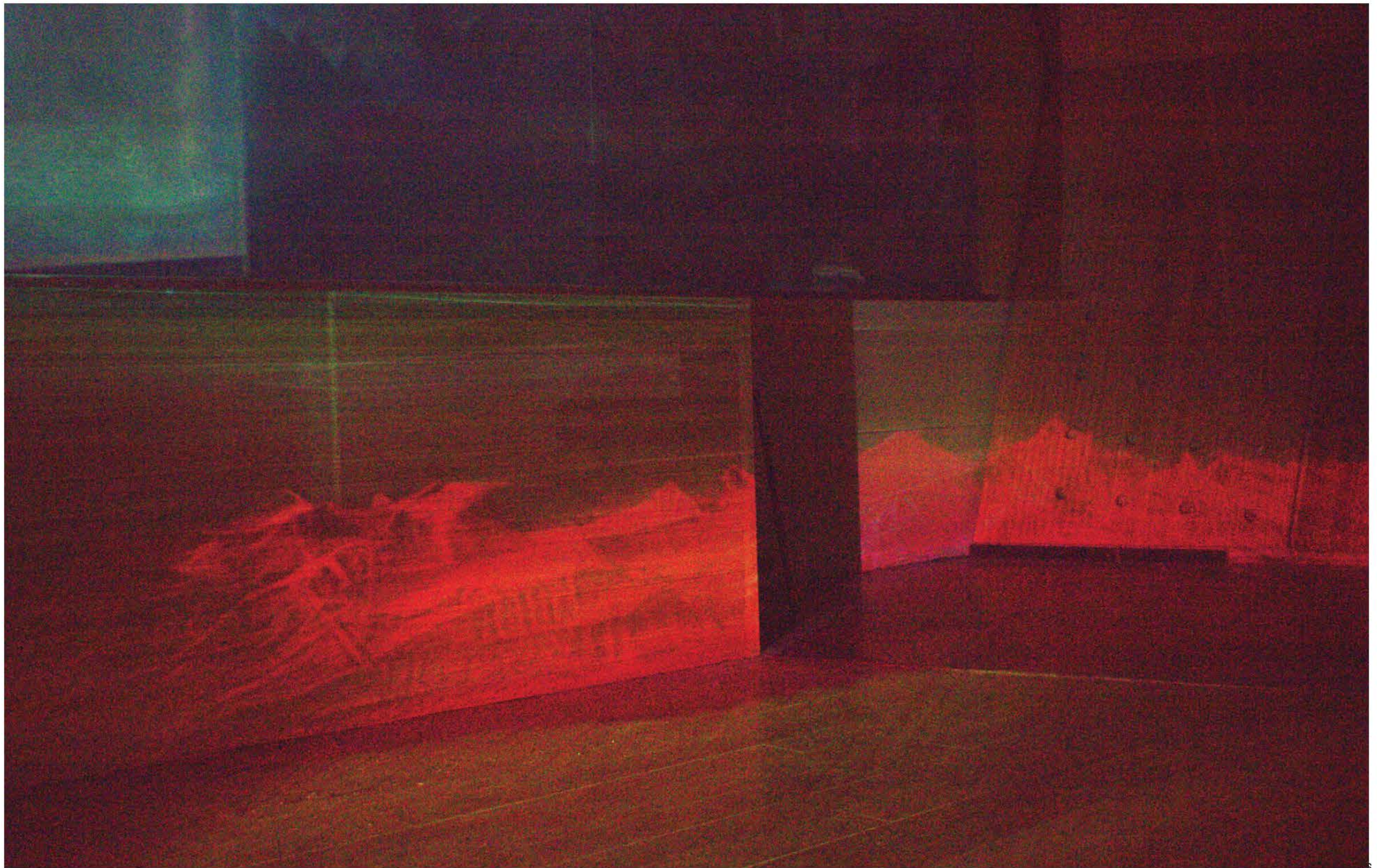


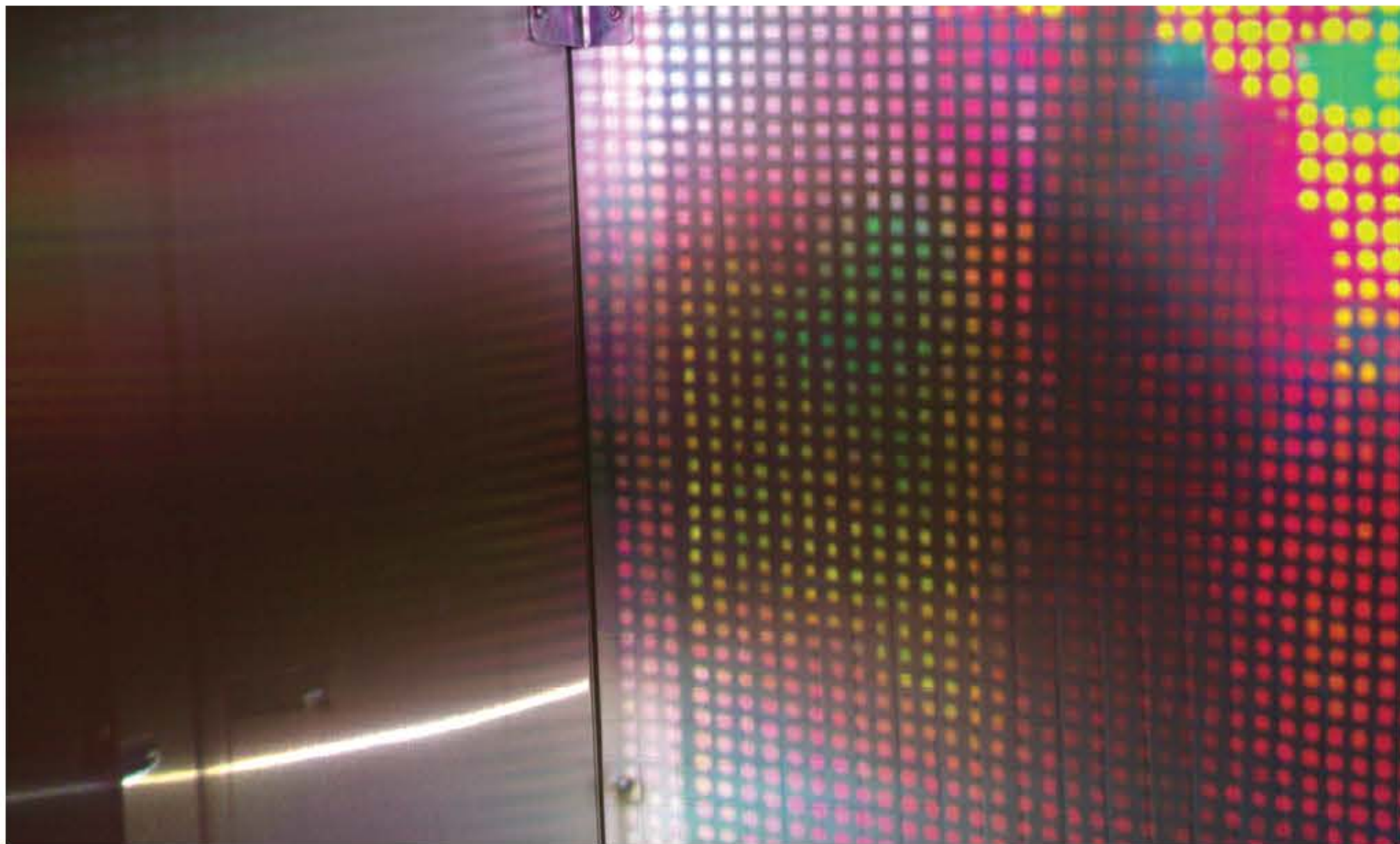
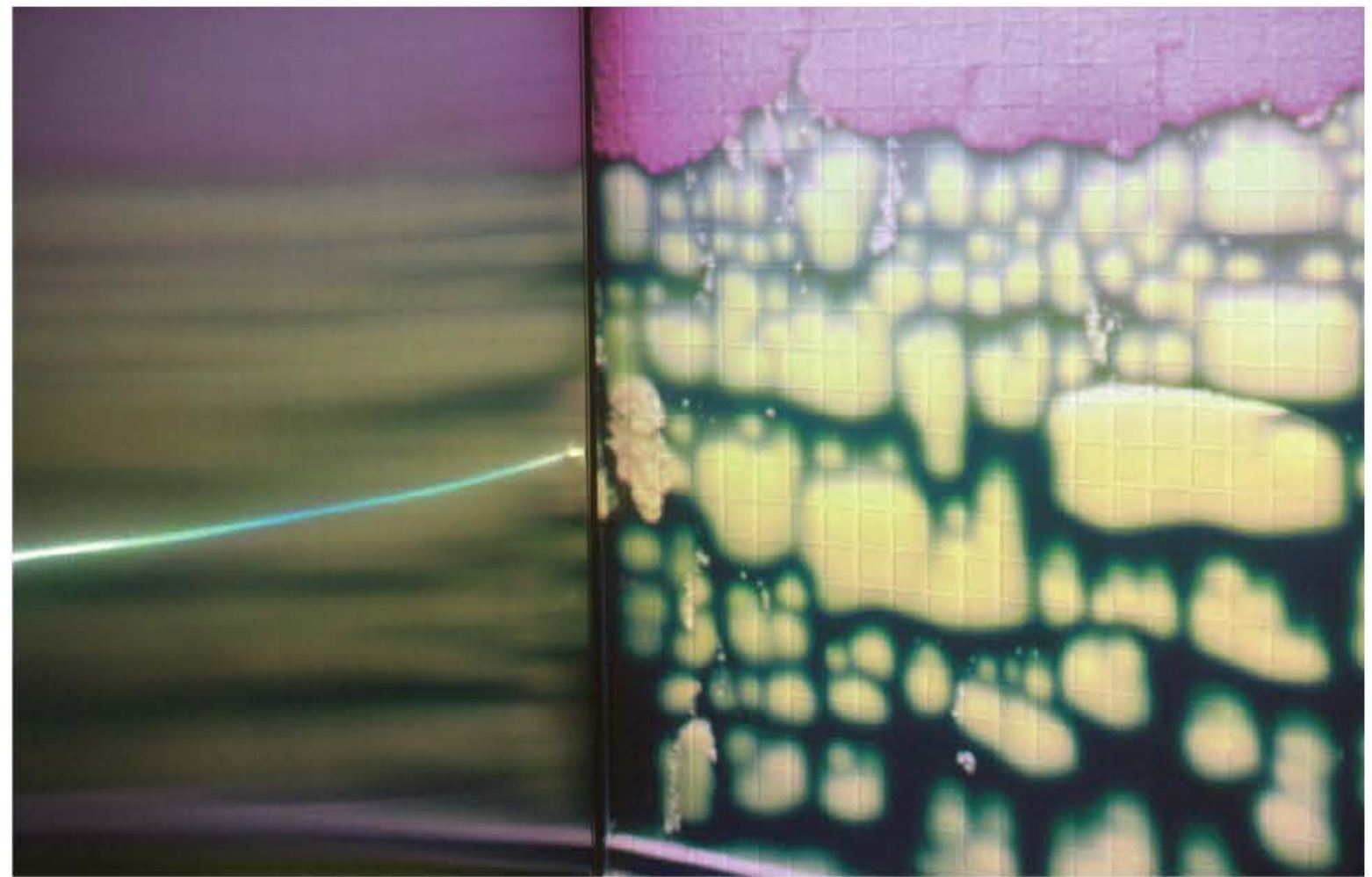
A NEW SYNTHETIC REALITY

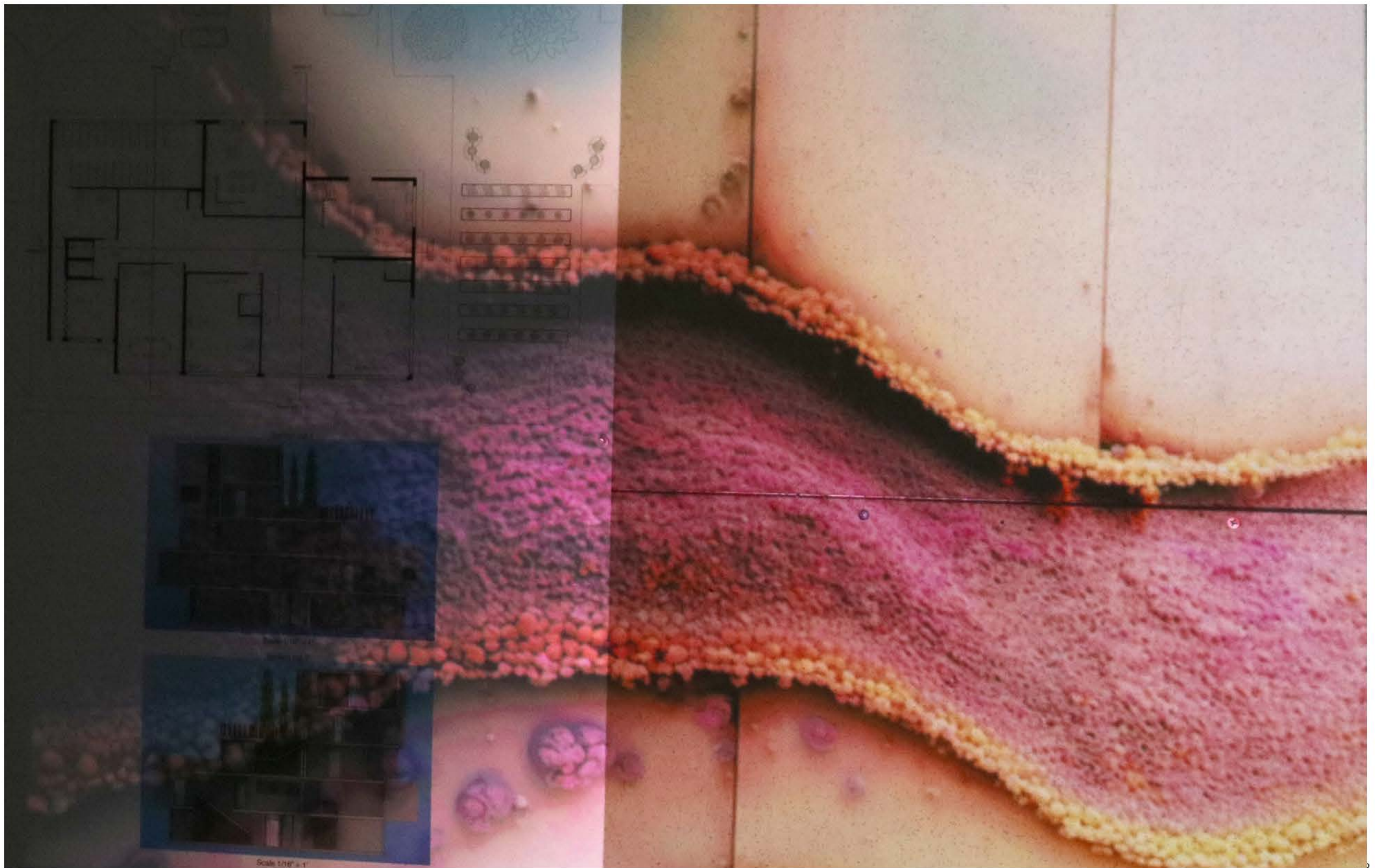


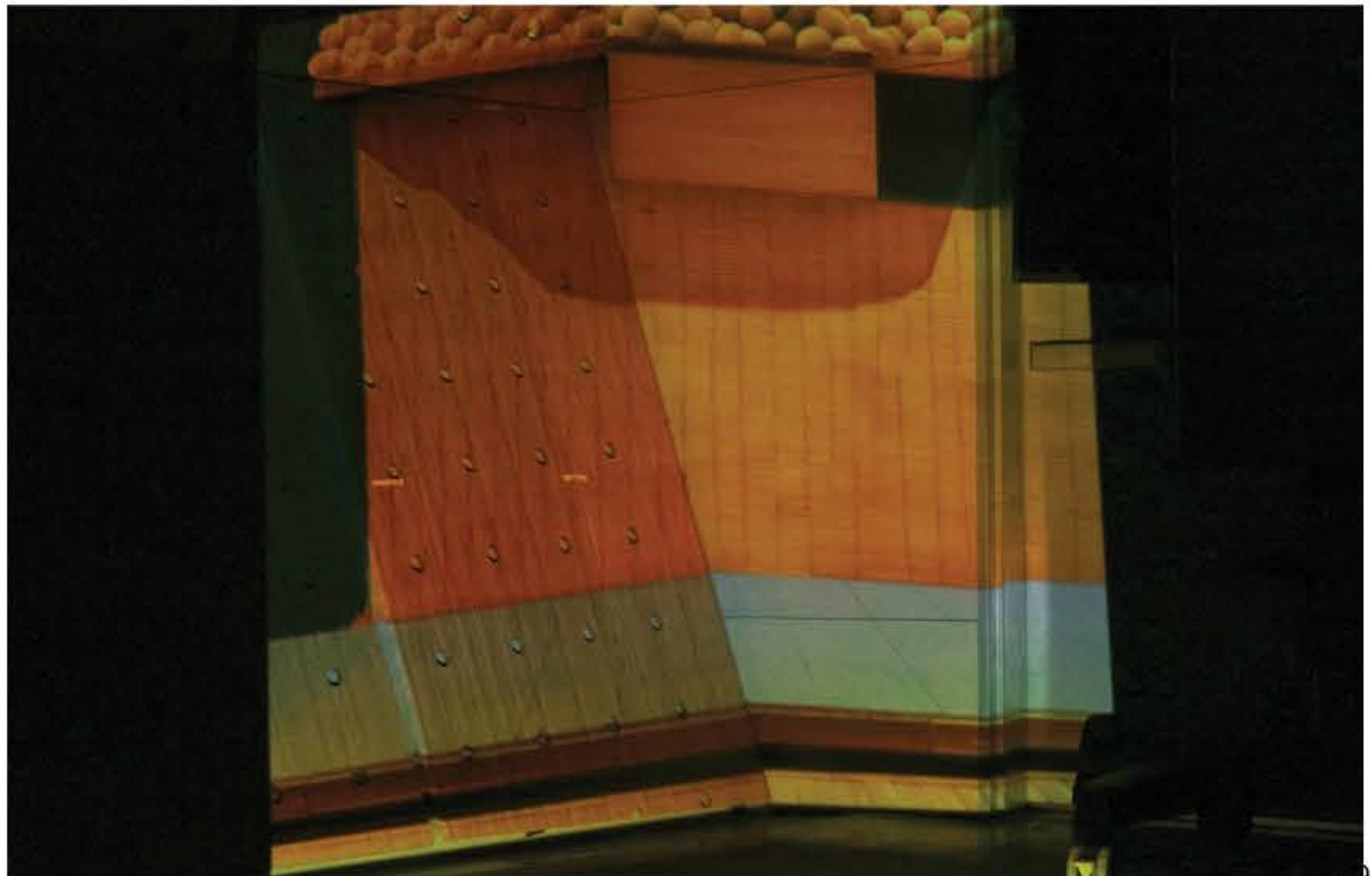
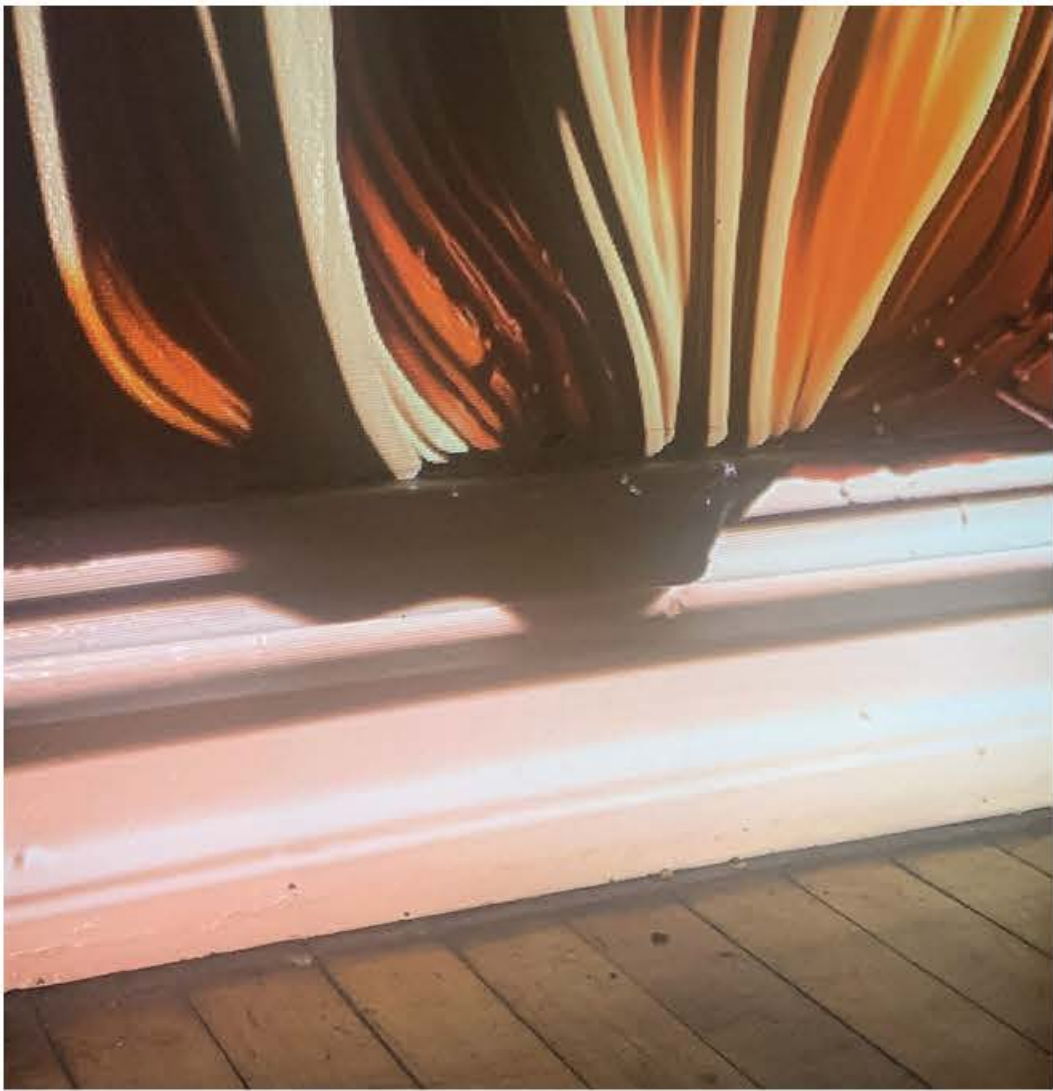


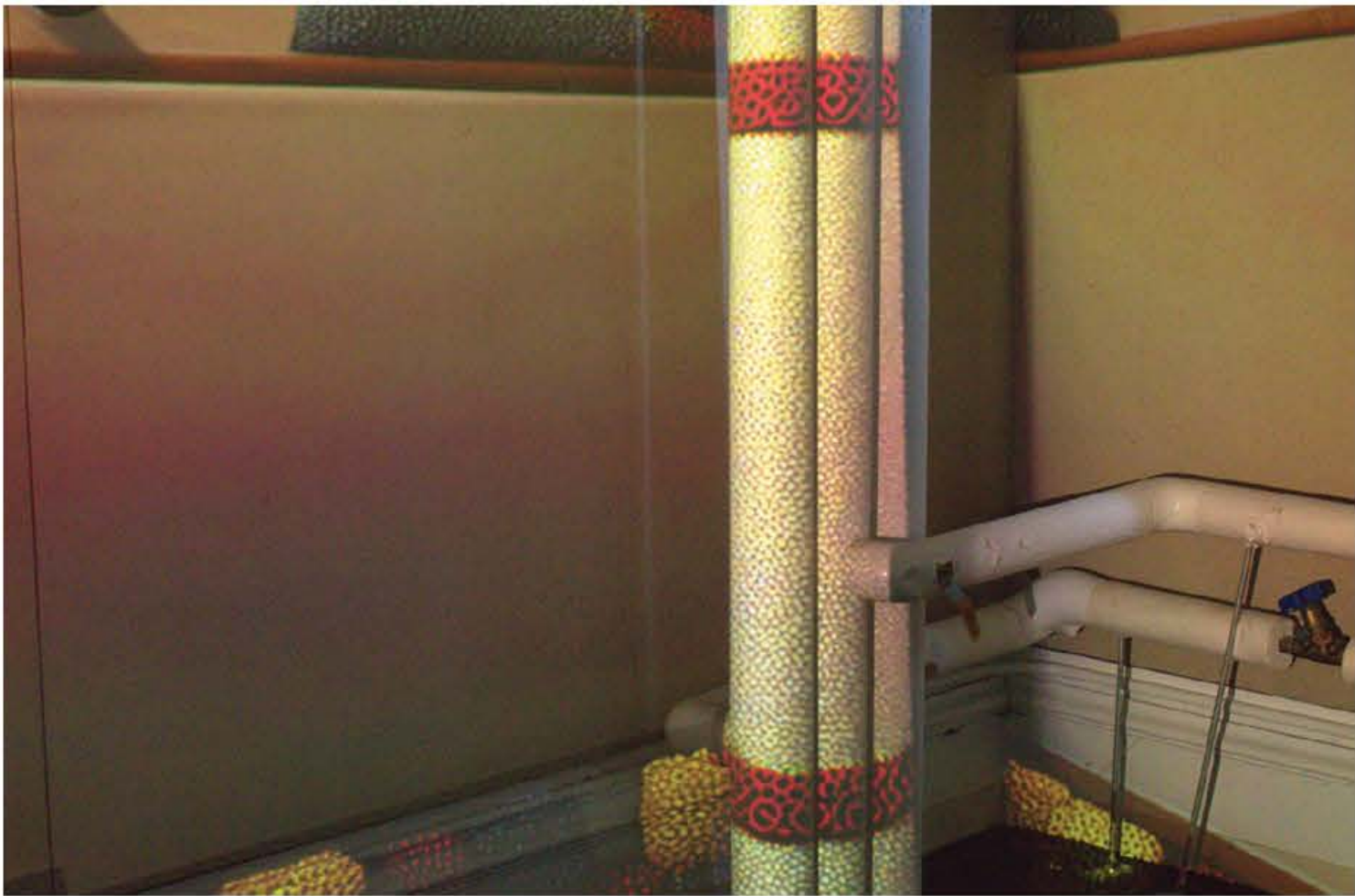














THE VALUE OF SYNTHETIC
IMAGING X ARCHITECTURE

A NEW SYNTHETIC REALITY

This technique is amazing because it unlocks a new territory of architectural experimentation, where we allow these synthetic matter the autonomy to travel, rest, and exist in the physical spaces we are so familiar with. We know what it feels like to live among the built elements like brick and concrete, but the same cannot be said for the aroused wall that now exists in our dining room. This representation has the potential to be developed into a facet of hyperreality where imagination and reality are inseparable. It legitimizes the properties and capabilities of synthetic matter and reinforces that its not bound to computer screens. This is an important study for architecture because it gives architecture an outlet to exist in an alternative medium, a medium previously hidden within the surface of the banal. This charged emotional matter can transform the narrative of a space, reflect its inner aura, and has the capacity to exist symbiotically with us. This matter carries a depth, detail, and ambition that is missing from other materials, and once given a surface to live and latch onto, it will begin to unfold the linear nature of our world.