

TERMINAL INFERNO

THESIS 2021



Manifesto

The international airport terminal of today is a lie. It presents an image of the terminal as a representative of a globalized aesthetic. Hidden behind the gray scale tones is a highly complex space. The thesis seeks to reveal the underlying condition through design exploration.

The international terminal is a separate entity from both space and time. However, it behaves as an analog to the modern city. The terminal and modern city both: invoke feelings of purgatory, are filled with people from a wide array of cultures, time zones, have the same programs, are plagued by issues of scale, and are divided by class. The classes of the airlines behave the same in the terminal, these consist of: the first class, business class, economy class and 'working class'. By exposing the classes embedded in the modern terminal, the issues and similarities of the present city and the terminal will be revealed.

There are 3 main readings of the project. 1 is a biblical interpretation, seeing the project as creating a hell, an earthly realm, a paradise and purgatory. The second is a critique of capitalism and how it has led to strict class division that leads to isolation of classes from one another. The 3rd reading is the international terminal as a microcosm of the city.

Partner: Erin Doherty

Primary Advisor: Timothy Stenson

Panel: Timothy Stenson, Elizabeth Kamell, Jean-Francois Bedard



Garden of Earthly Delights

"The Garden of Earthly Delights" by Hieronymus Bosch operates in a way similar to the project in which 3 worlds are isolated from each other yet depicted side by side. Once the triptych is closed a pure geometry is revealed to enclose the complex interior. The painting became a major source of inspiration for the project.

Story Board



Departure (check in and security)

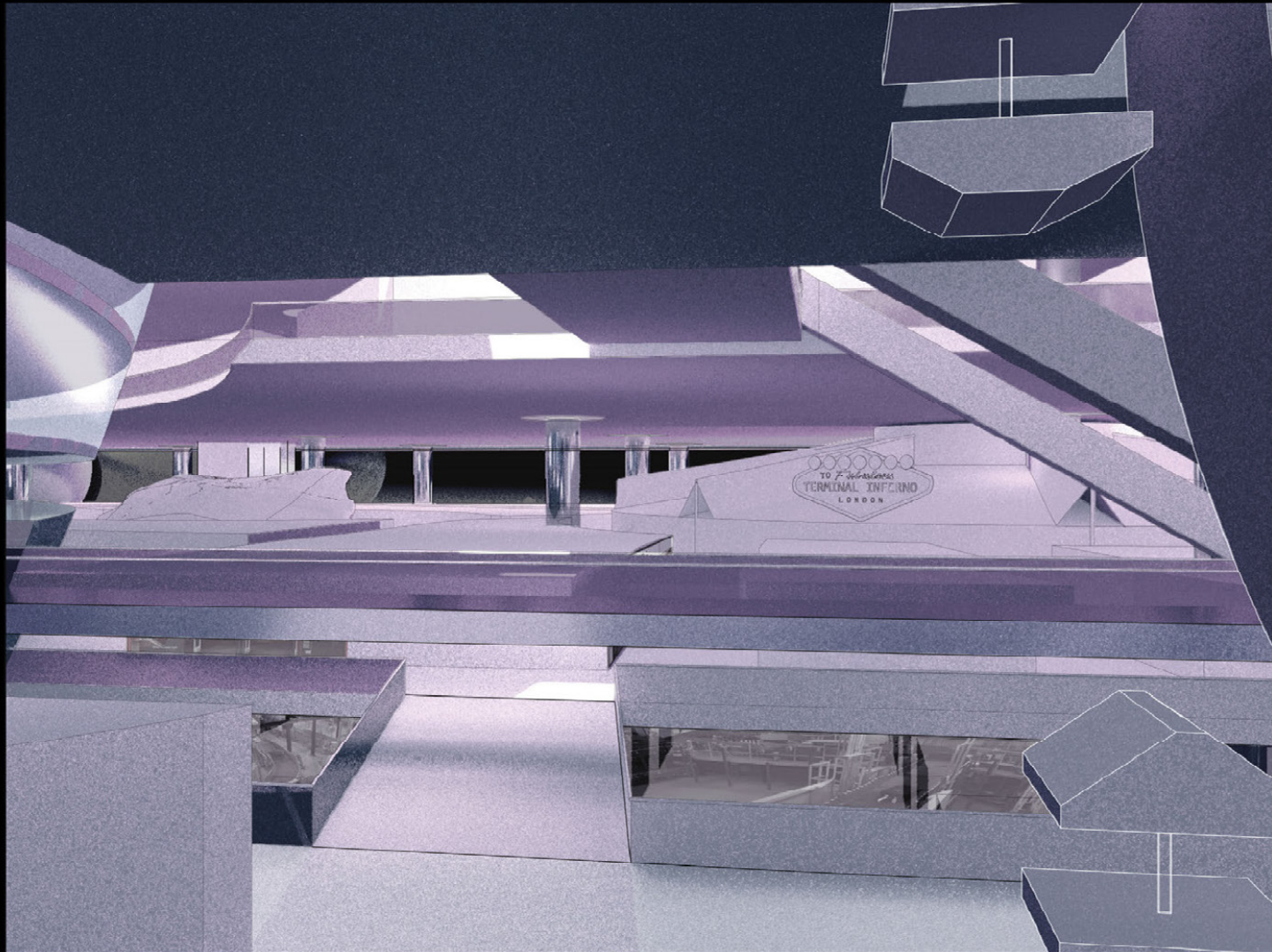
This is what the passenger would see arriving at the airport. The first space they encounter is the check in- security hall. It is a militarized space/ a border to the terminal as terminal inferno like all international airports, is a separate political entity from their country. The space resides at the periphery of the terminal embedded in the wall. The long hall is the last time the passenger will stand with passengers of all economic classes.



Sorting of Classes

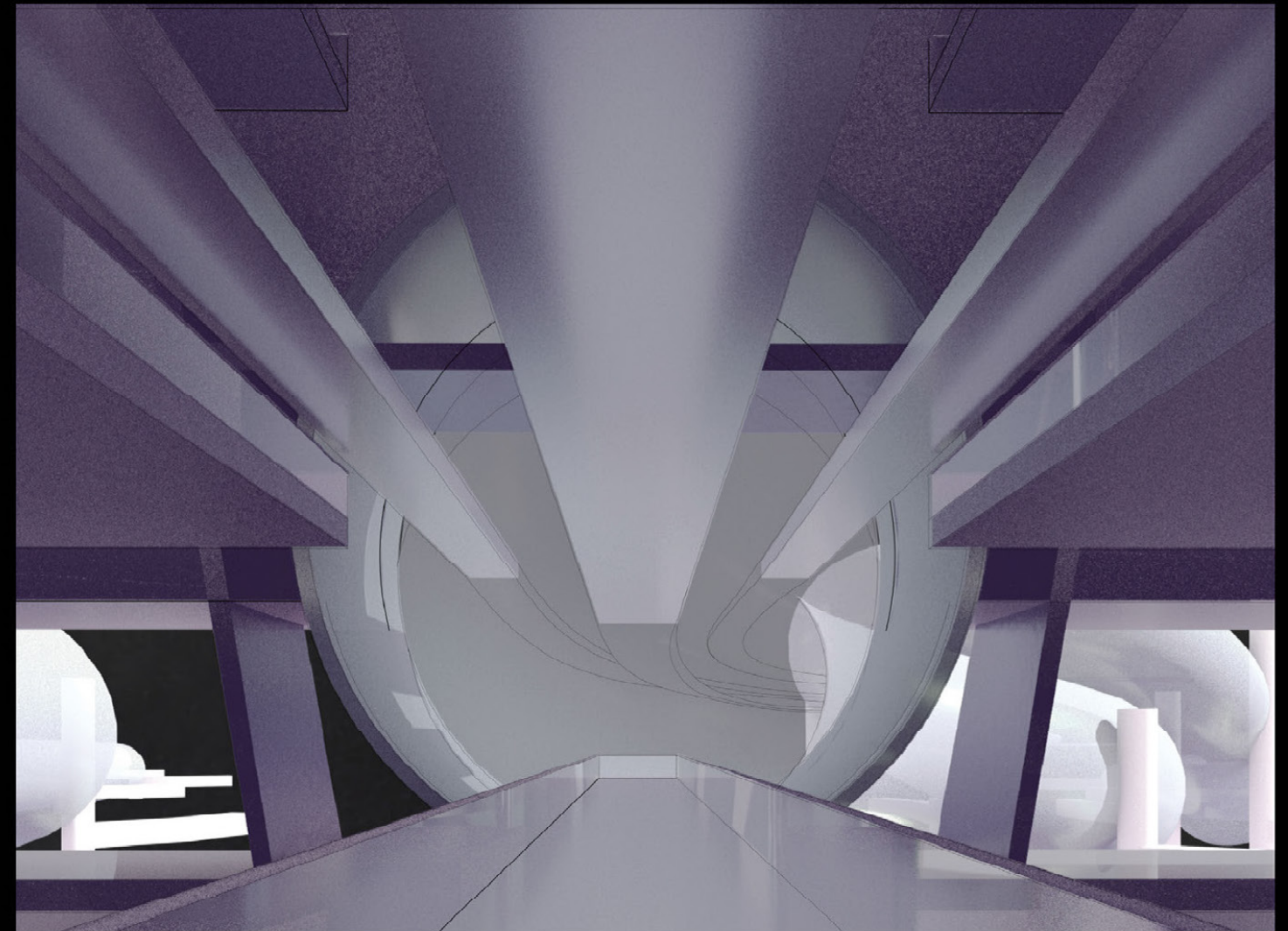
Upon passing through security. Passengers are sorted by economic class. The typical passenger has to walk a bit further than the first class passenger to get to their escalator.

Story Board



Experiencing programs

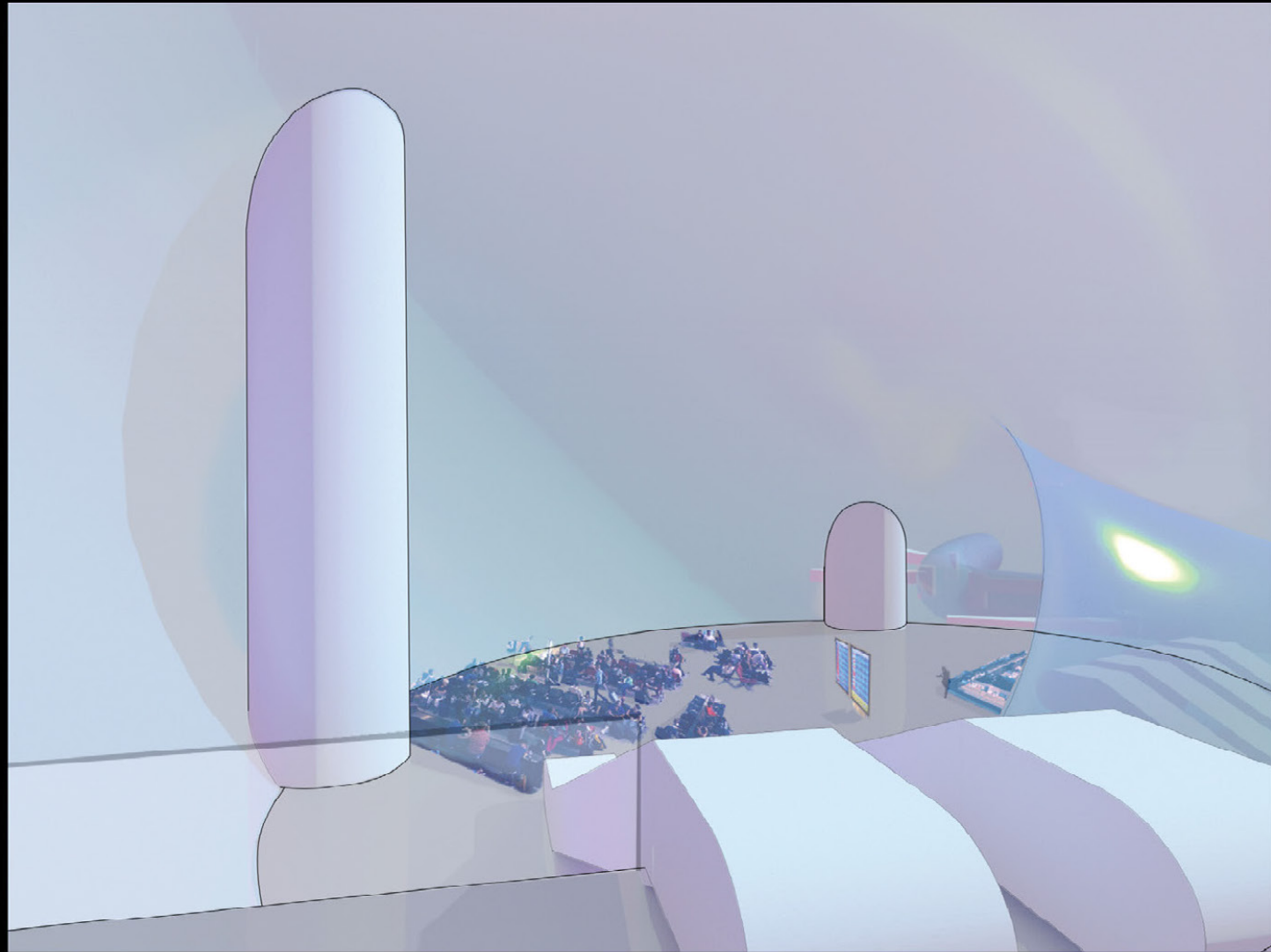
The passenger is now in the terminal and what they find is a city esque environment...
In the foreground is a ferris wheel, where economy class members can go for a quick ride and get views into other classes they would not normally get.



Off to the satellite

Boarding time is approaching and now the passenger must go to their gate. They go to a path.

Story Board



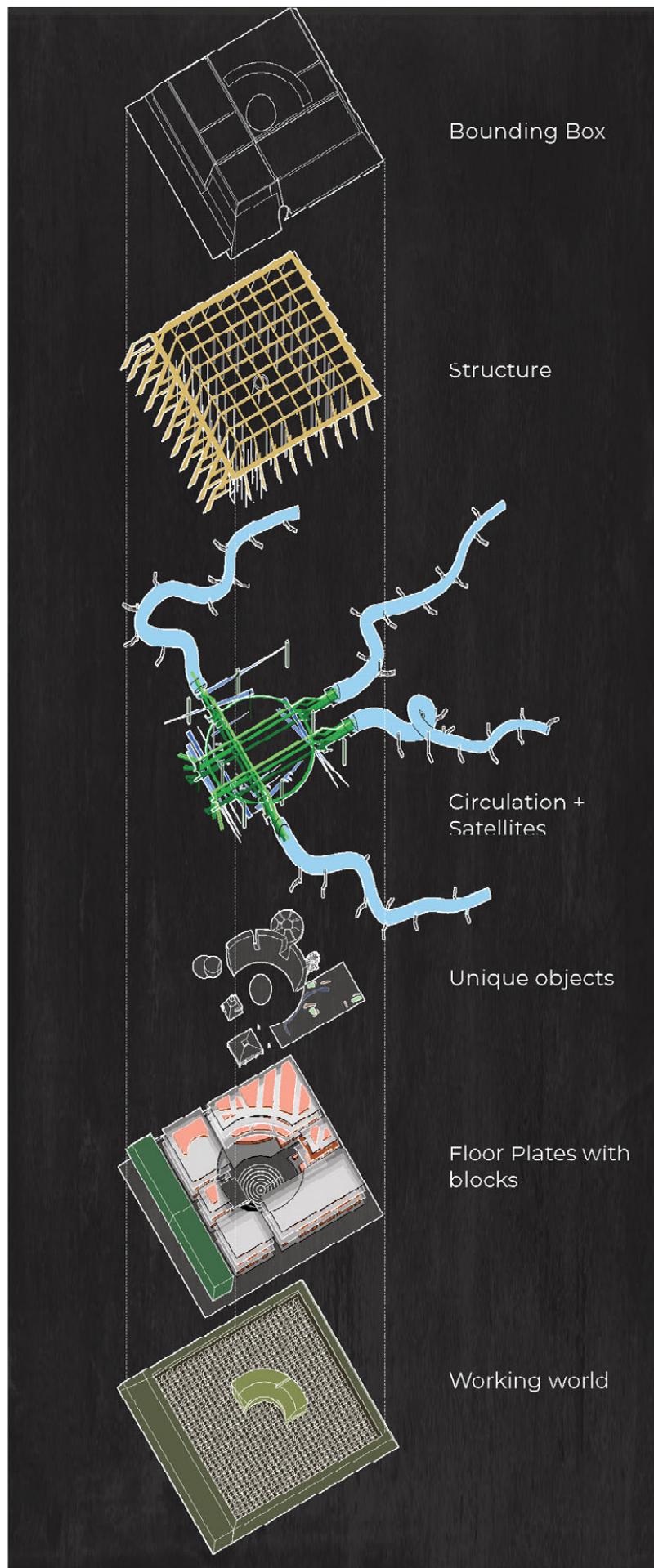
Inside tentacle

Now the passenger is at their gate and waits to board for unknown amounts of time. The passenger thinks back, "How long have I been here"



Plane

On the plane the passenger was lucky enough to get a window seat with a view aimed at the terminal. They can see that the previous space they were in. It was a tentacle!



Layered Axon

The terminal is conceptualized as a series of layers.

Working world layer at the bottom.

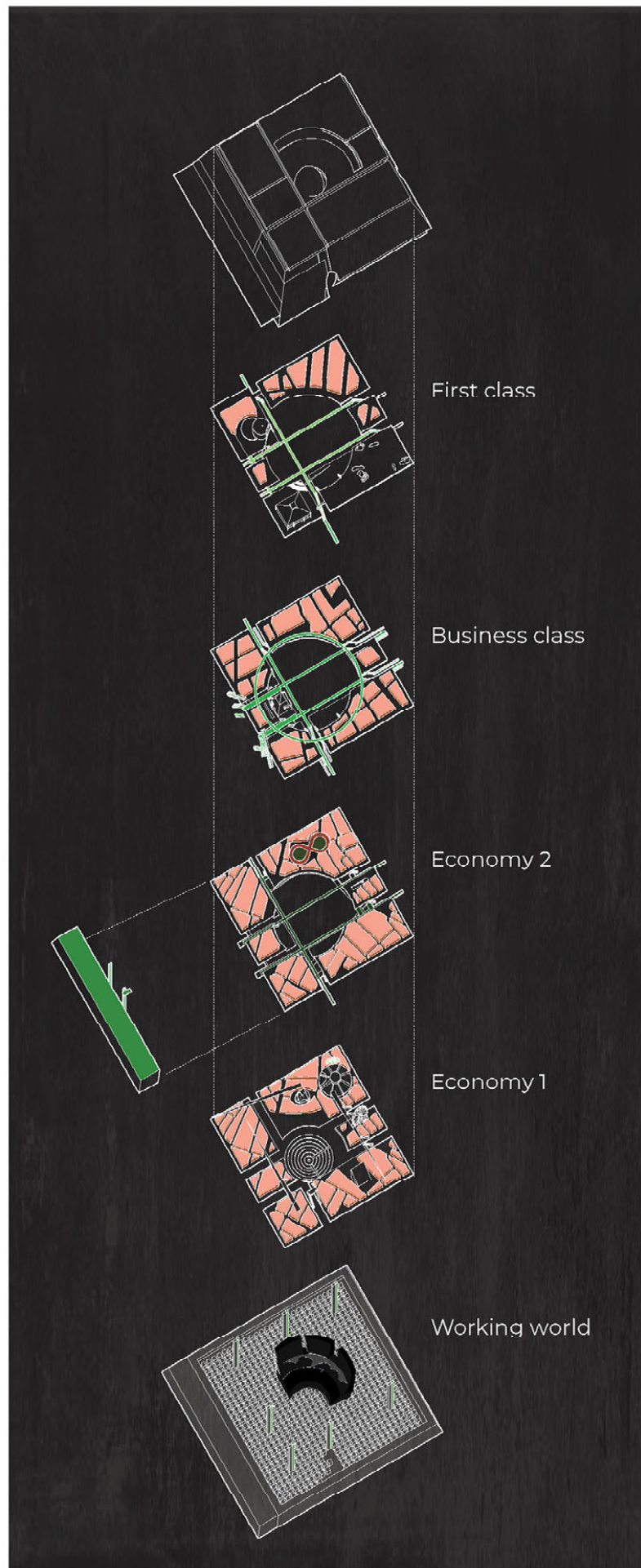
Floor plates that are divided by roads which are divided by paths that result in blocks.

Unique Object that are superimposed onto the plates.

Circulation + Satellites The circulation with connections to the tentacle satellites.

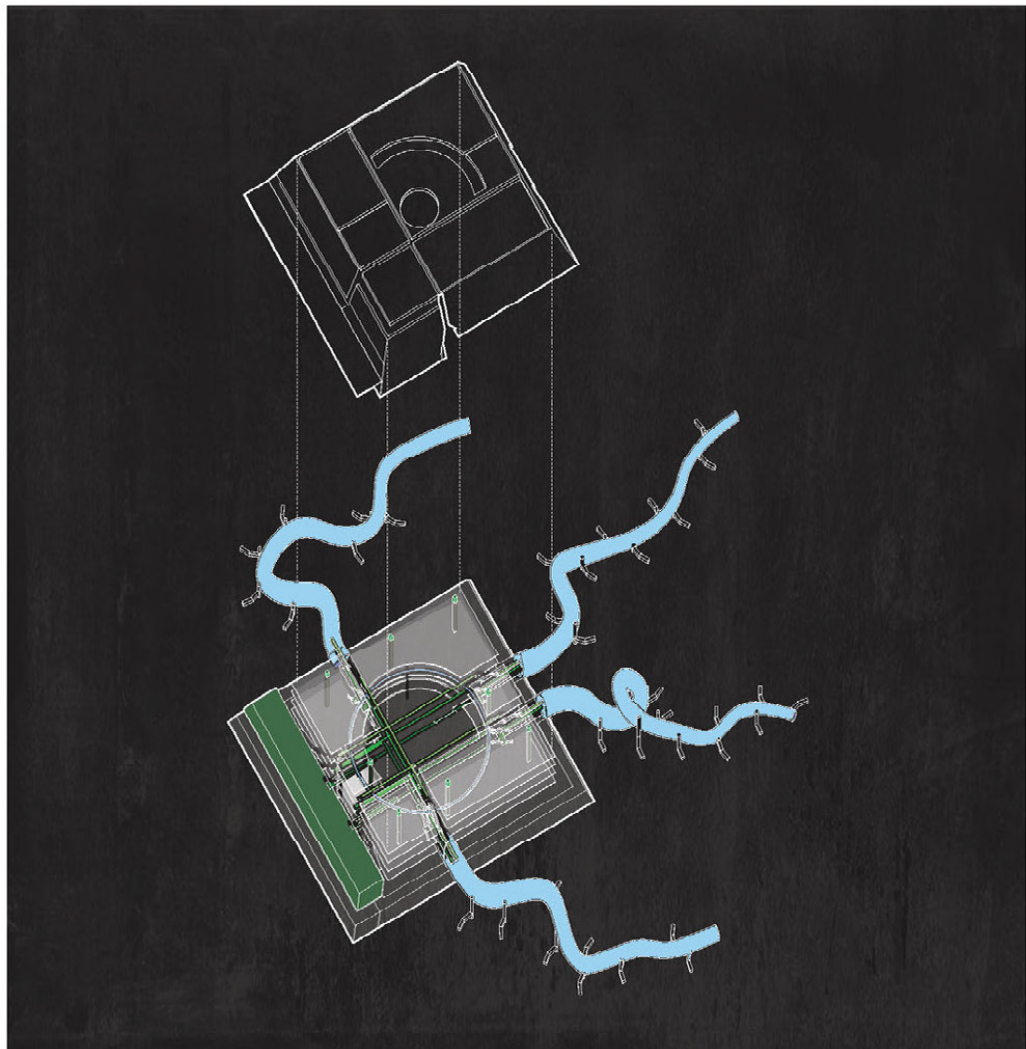
Structure The gridded box is the structure for the bounding box. Each section of floor plate receives their own structural grid separate from the terminal.

Bounding Box is a pure geometry that encloses the complex interior and severs the interior world from the exterior one, Isolating the terminal in space and time.

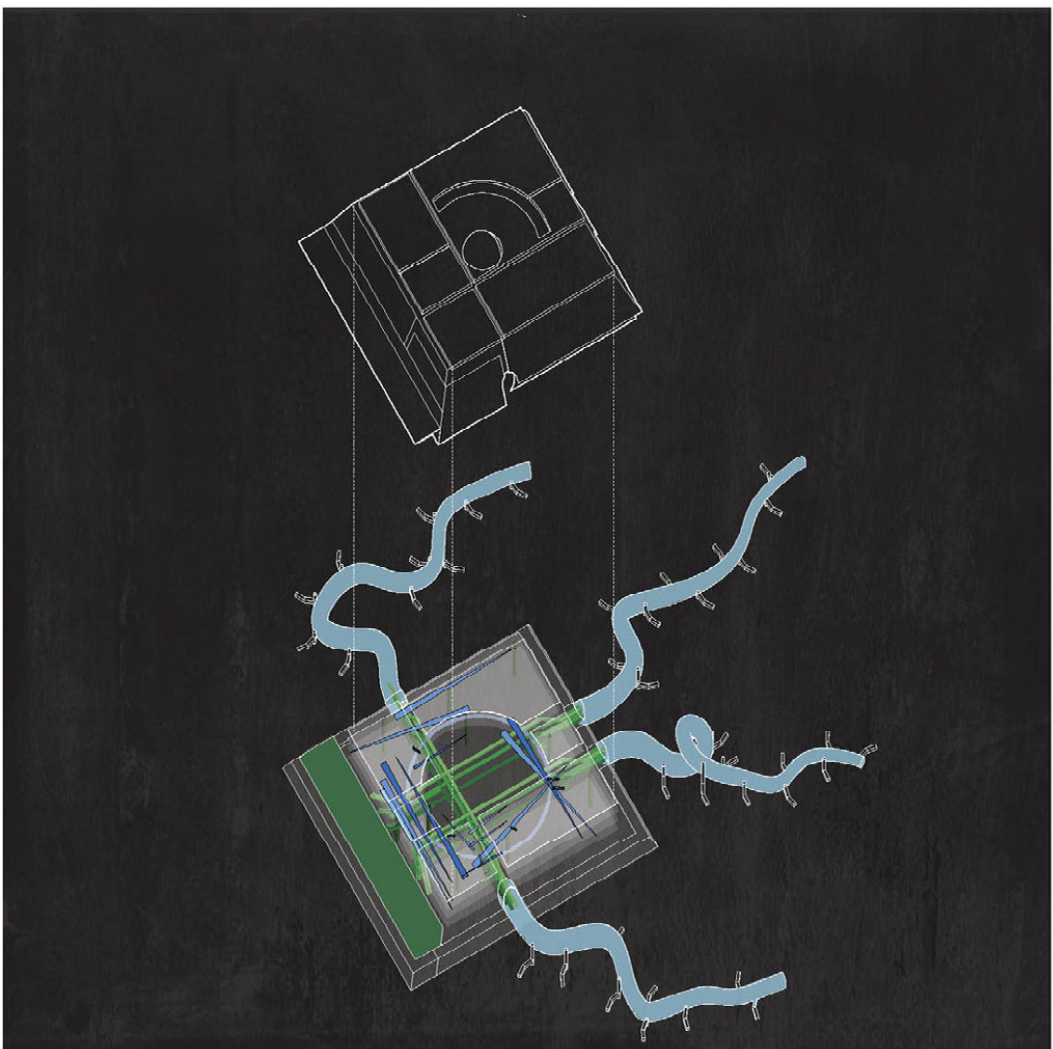


Layered Axon 2

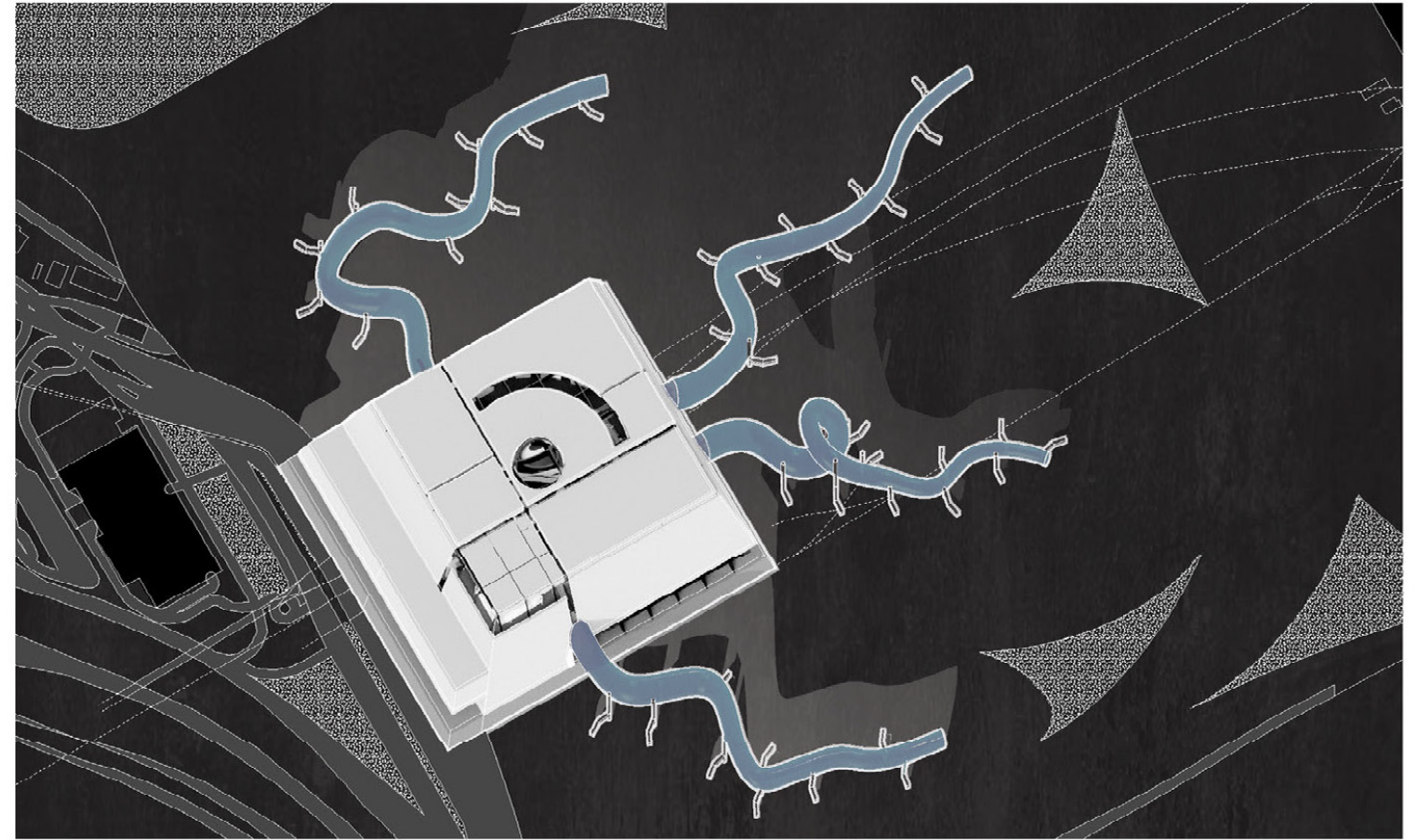
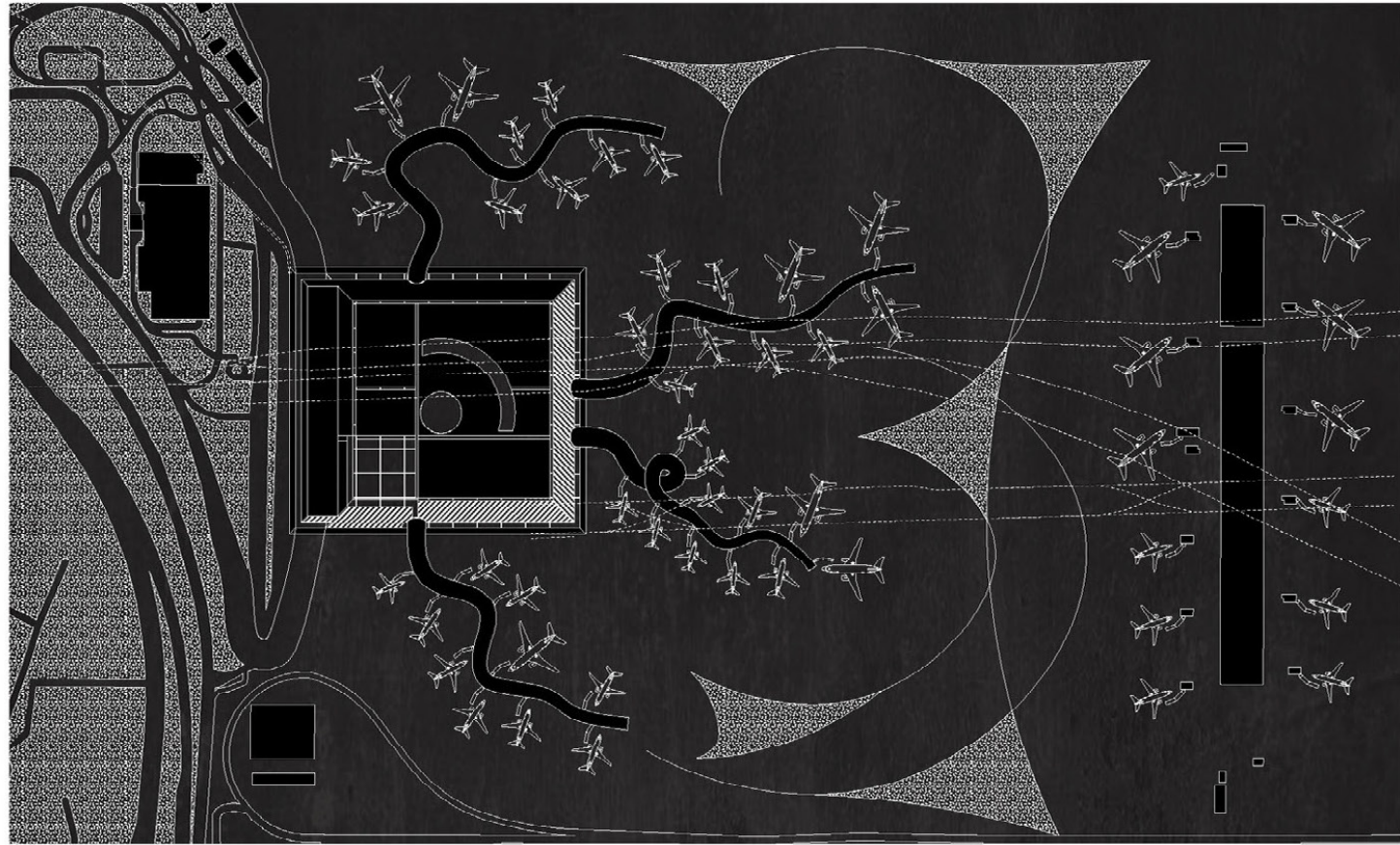
This is showing how the floor plates are separated by class, each having their own city blocks and showcasing the relationships between them. Through isolating the classes, the differences between them are revealed. Inequality is revealed in the terminal and the city, as the terminal is a microcosm of the city.



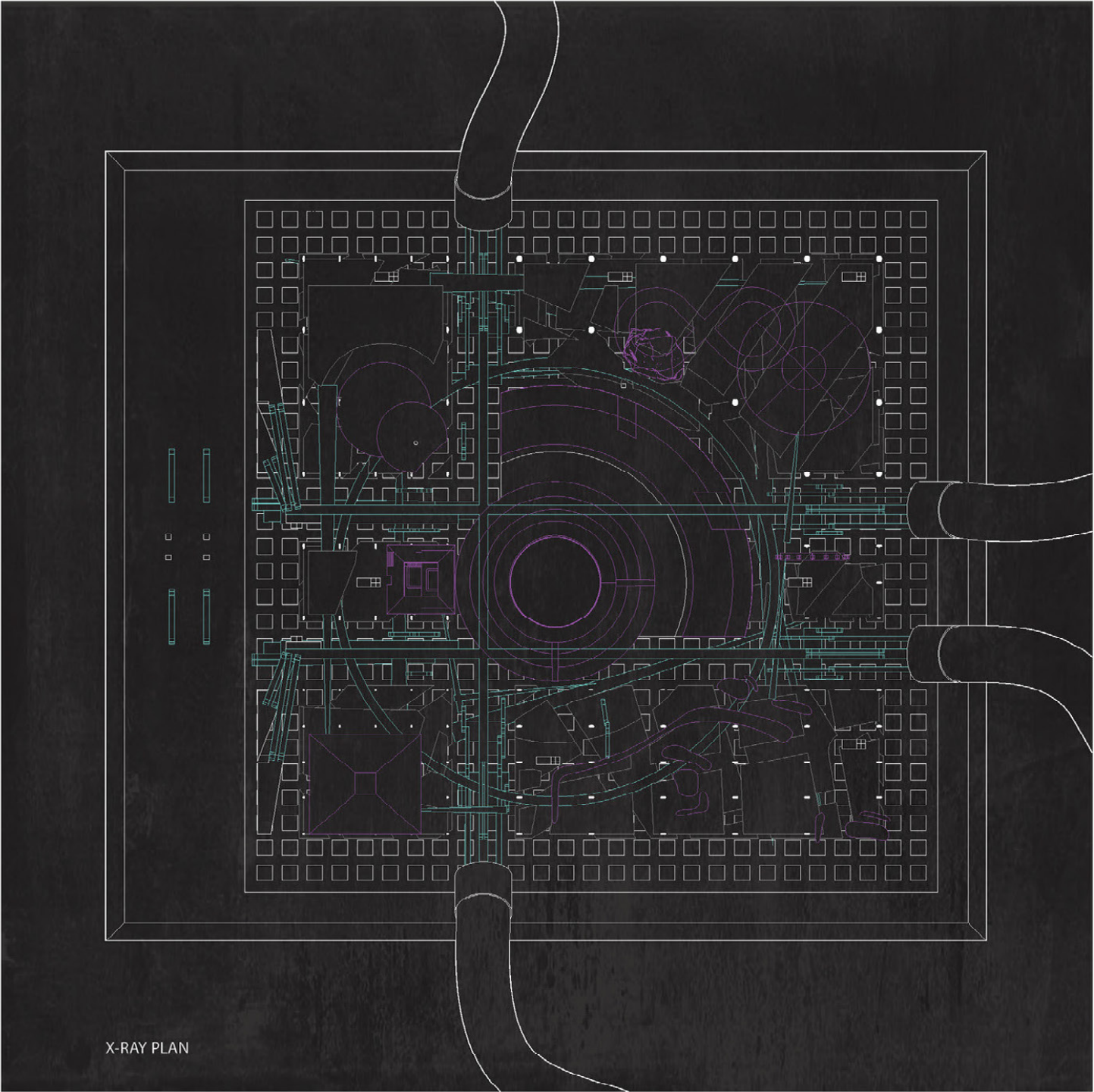
Primary circulation
Primary circulation takes the passengers from their plate to the satellites.



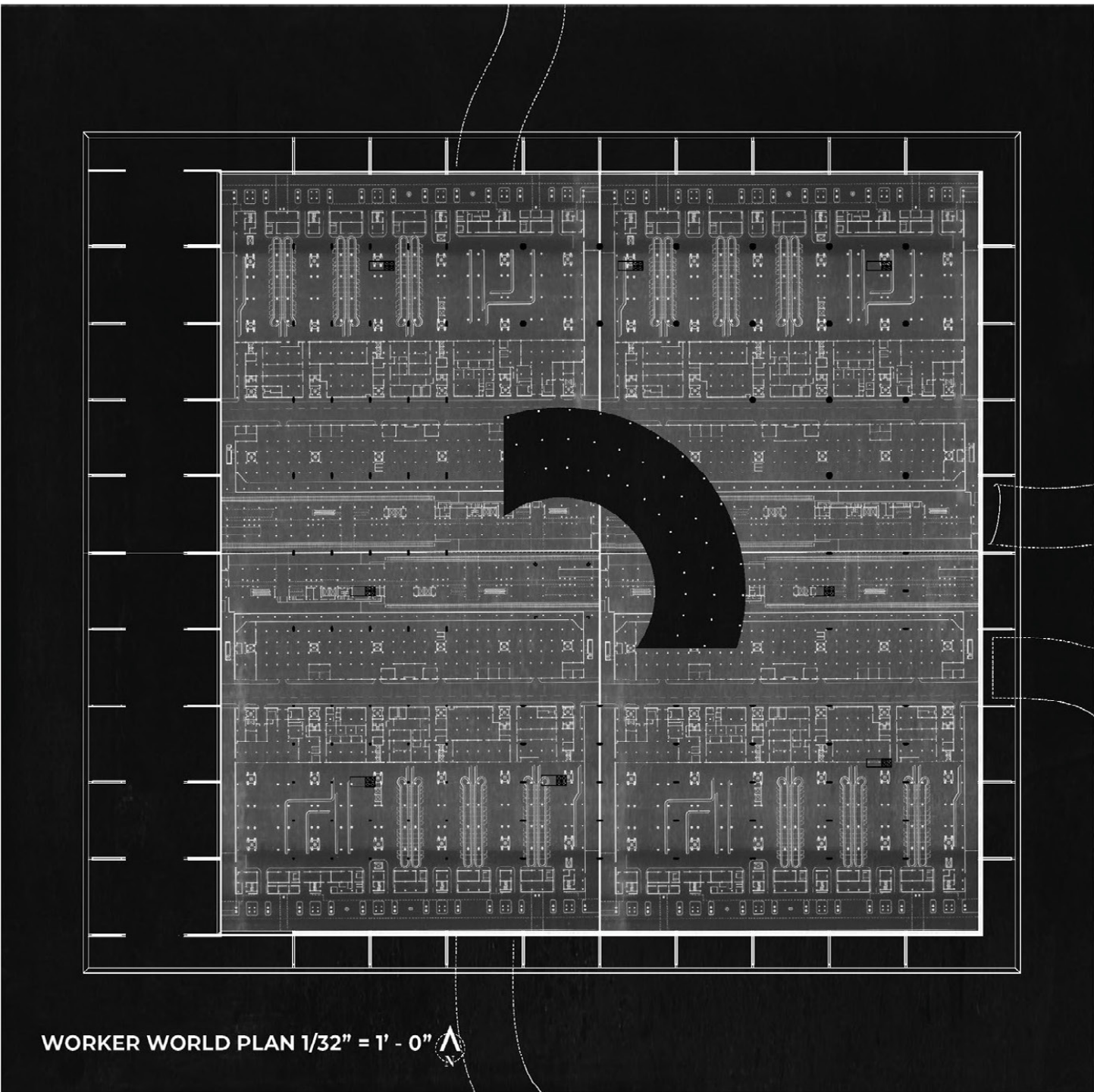
Secondary circulation
Secondary circulation connects the floor plates to each other.



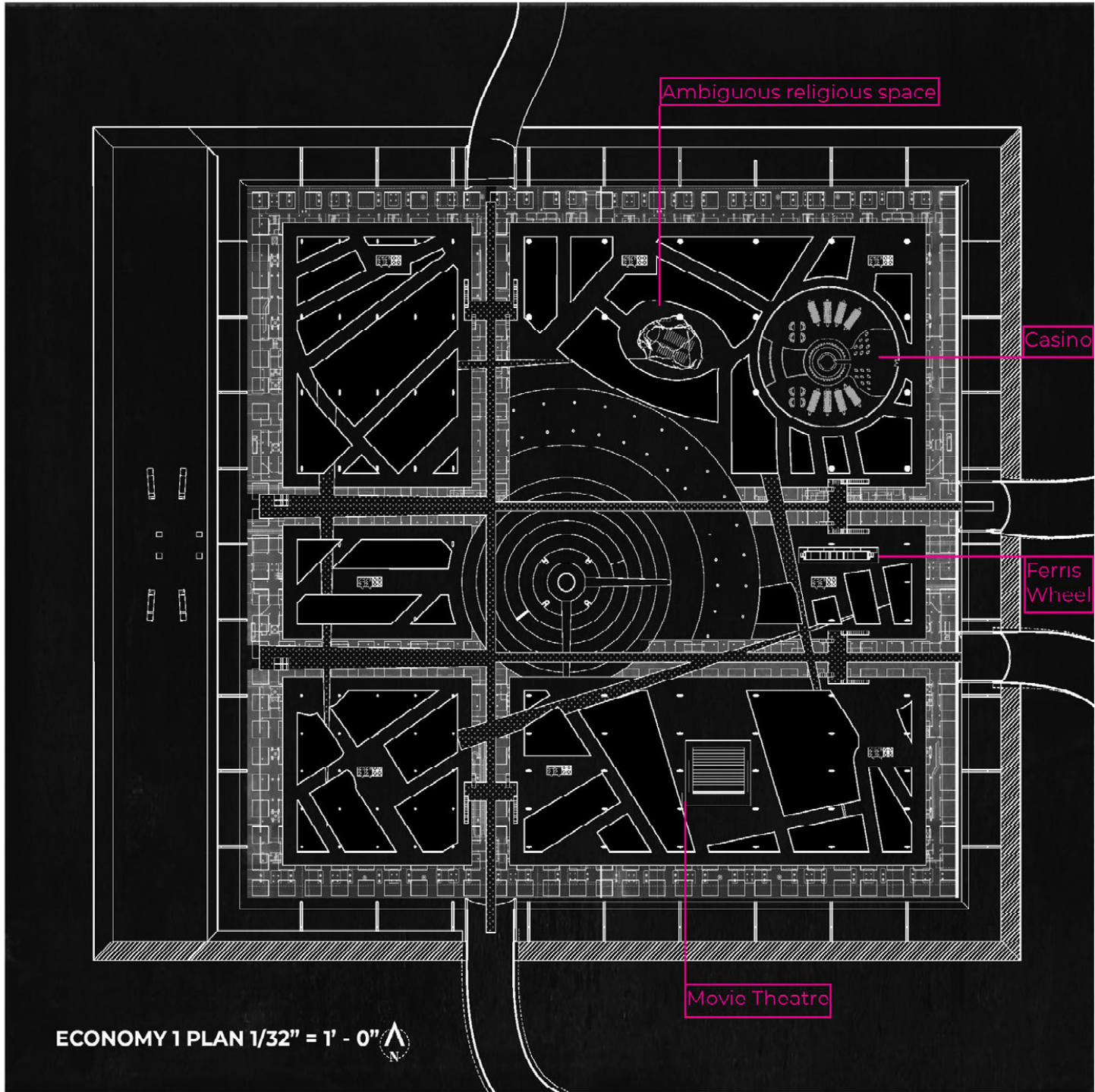
The site is Heathrow Airport, London. It is connected to the city by rail/ bus/ and car. The tentacle arrangement is such that 40 gates are present, typical for an airport of this scale.



This plan displays how all of the key programs(in purple) relate. Cyan lines indicate the circulation.



The Working world Is dedicated to baggage handling, storage for the various stores and restaurants above and lockers for the workers. It is connected to the rest of the floor plates by freight elevators which supply the material requirements of the class's specific programs.



Here is the first of 2 economy floor plates. There are two floors dedicated to this class because they are the largest group in the terminal. The spaces are dominated by generic programs.

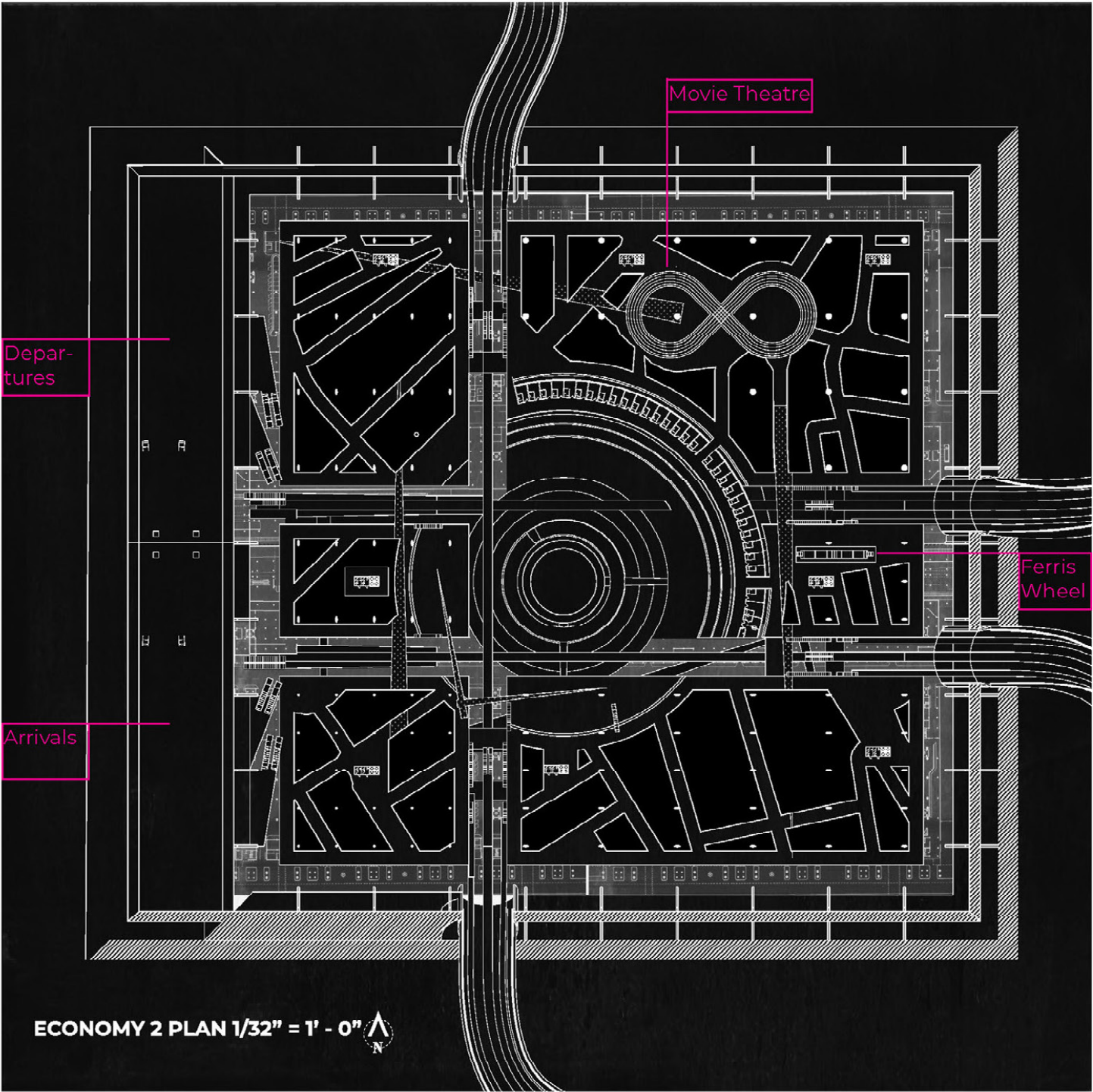
Decks are organized by a density reminiscent of city blocks. The spaces in the 2 economy classes are more dense than the other plates.

In the plan there is the Ambiguous religious space(a space open to any religious group to pray in, the space is left plain in order to accommodate any religion) juxtaposed next to the casino. The religious person goes to the religious space to connect to their god. The casino is where gamblers go to connect to their vice.

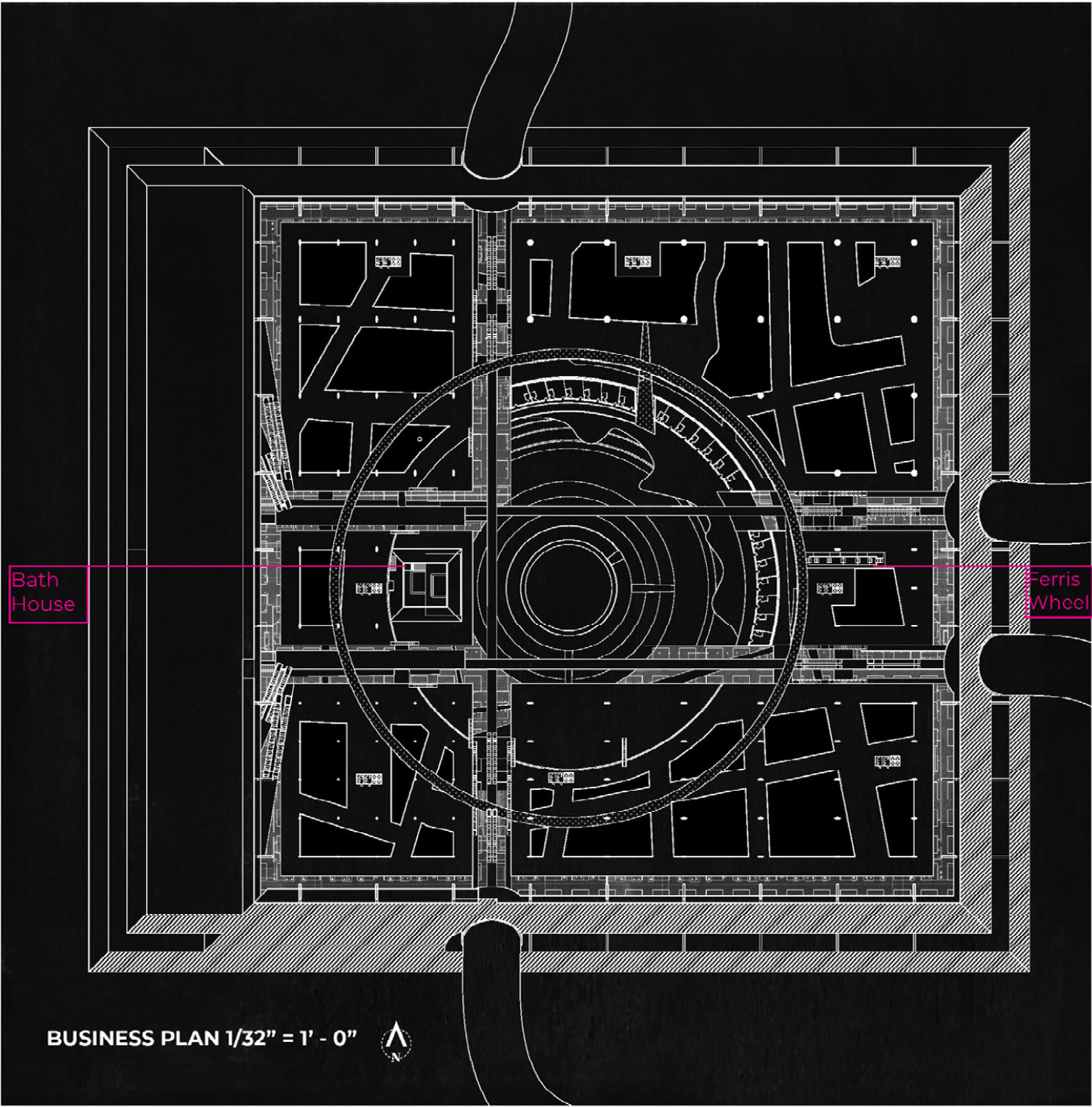
A Ferris wheel is accessible here and provides views into the next 2 plates. An amphitheater is located at the center of the plan that serves as a waiting area.

Surrounding the waiting area is the lower level of the hotel, the hotel is also divided by class the same way the terminal is.

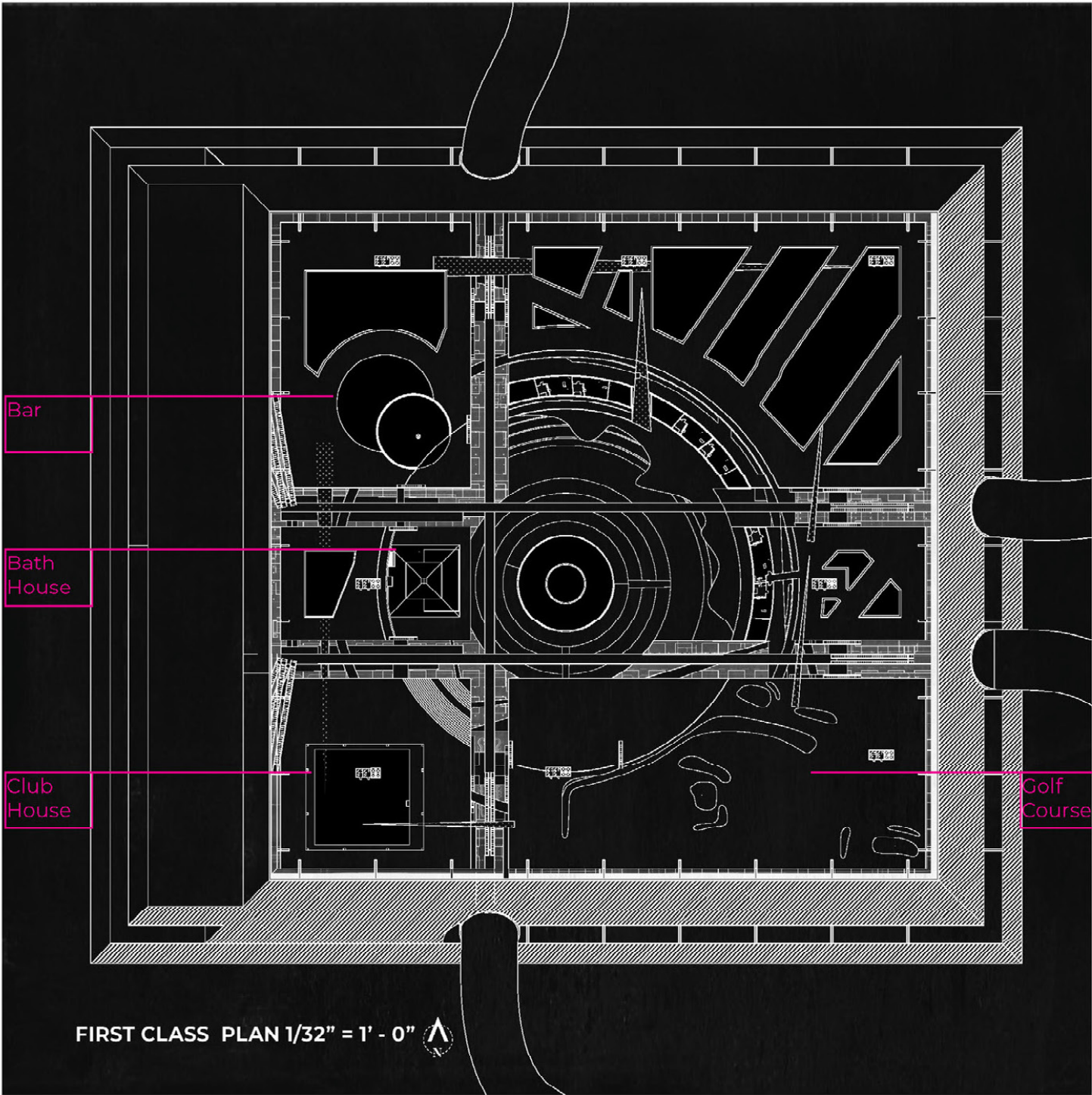
The plates are divided the way roads divide blocks. Paths are superimposed to create connections between plates of the same class.



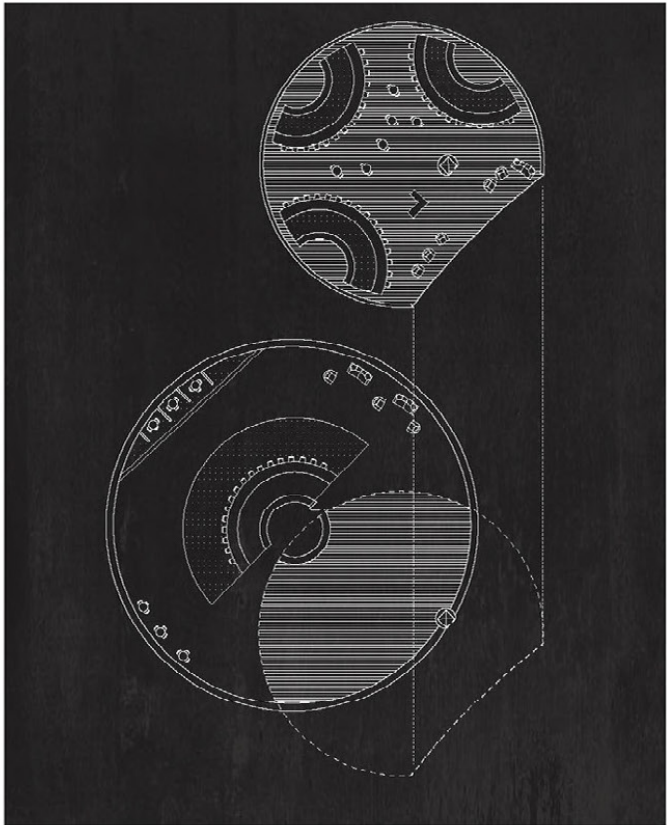
Here is the second floor of economy where a running track is located. The Ferris wheel is visible here. The hotel rooms are visible here. They are much more compact than in the upper levels.



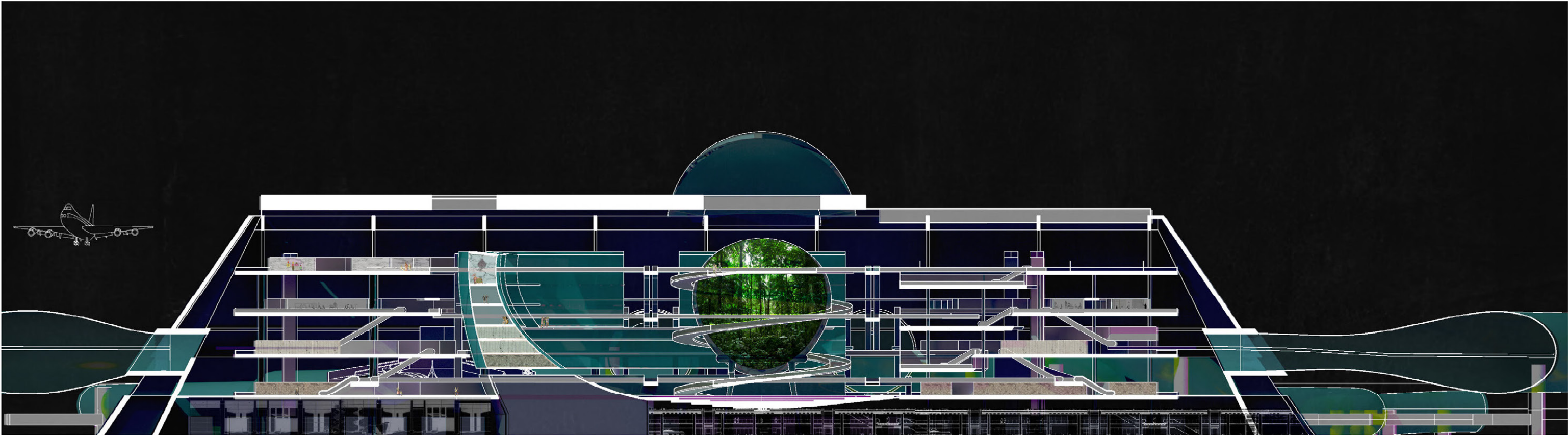
The Business class floor contains conference rooms, daycares for working parents with families, phone booths, and other programs to accommodate business workers. A bath house is present on this plate and is accessible to the first class passengers as well. Although it to is divided.



The first class plate has the most space between blocks and access to luxurious accommodations and fine programs such as golf course, clubhouse, the bath house and the lower level of the 2 floor bar.

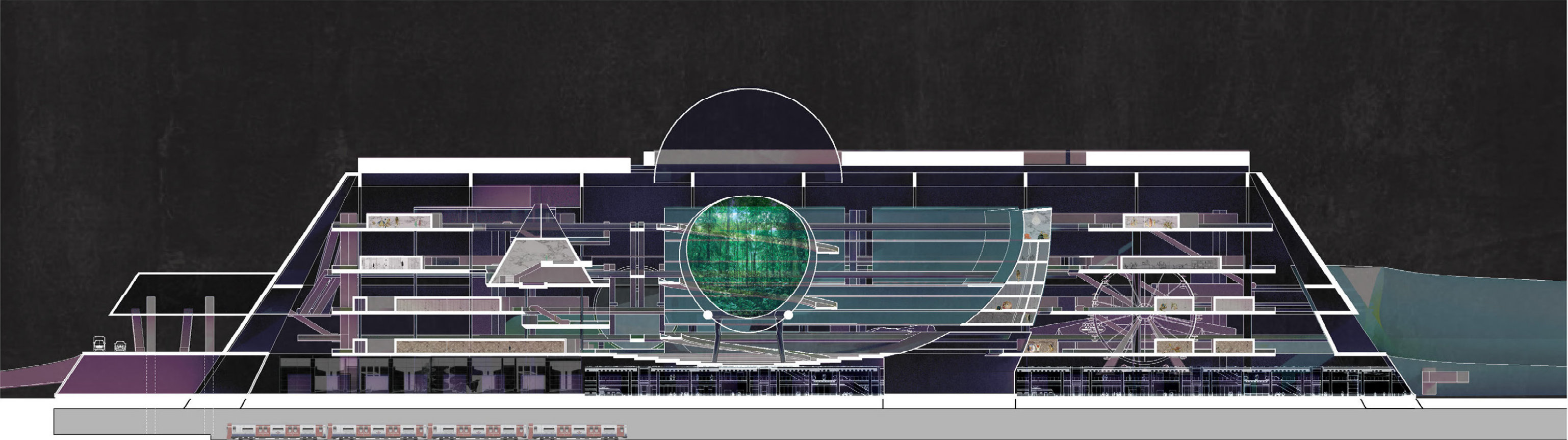


The bar is divided into first class and super rich private jet class. The private jet class has the ability to rise to their floor and take off without being in the "waiting" period trapped in time and space. They have a fluid and easy arrival and departure. Their only program is a bar.



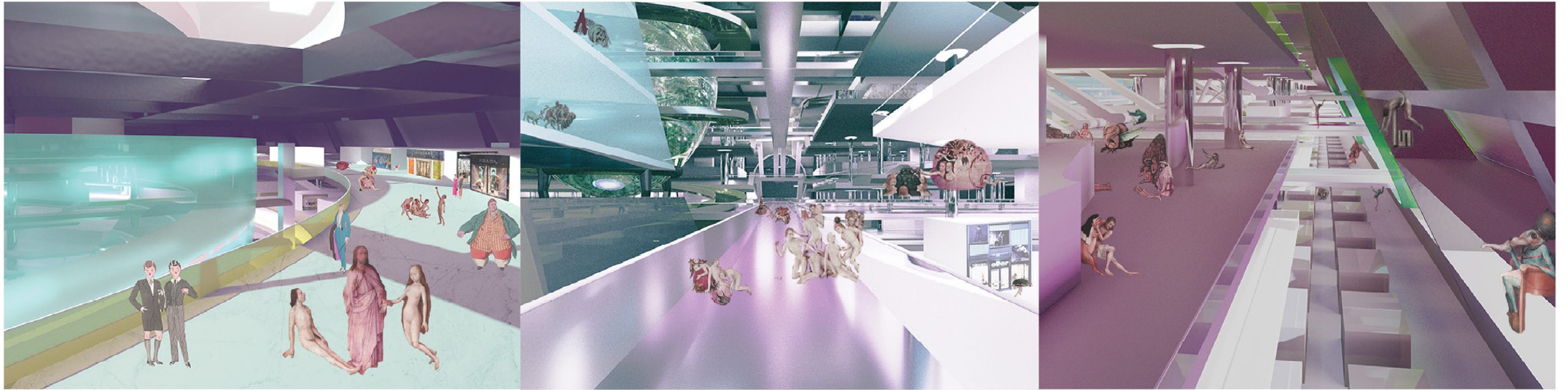
SECTION A 1/16" = 1' - 0"

The garden at the center of the section is the garden of purgatory where people can only view eden. But they can not enter and can only circulate around it. They contemplate time, class and the rest of the terminal.



SECTION A 1/16" = 1' - 0"

The terminal is connected to a subway system below. There is a Ferris wheel, that can view economy 1, 2 and business class.



Left Panel: The first class level where greed, gluttony and excess can be indulged without disturbance from “those people” **Center Panel:** View towards the garden of purgatory and the earthly levels **Right Panel:** View of lower Economy and Working levels it is the inferno.