



RECLAIMING TERRORISM

REVEALING THE IGNORED TERROR
AT HOME

AARON CASS

Assisted by Crystal Giard

CONCEPT

The U.S. is inundated with gun violence and death, this has been true since the very beginning of the nations story. While this remains true, the context has changed. Where the story of the U.S. and it's infatuation with gun violence began in revolt and war, it now resides in otherism, domestic terrorism, and white nationalism.

Mass shootings are now nearly a daily occurrence in the U.S. with more than 300 occurring a year. And while over the past few years people have become increasingly repulsed and enraged by them, for the most part, we continue to direct our public fears at international threats.

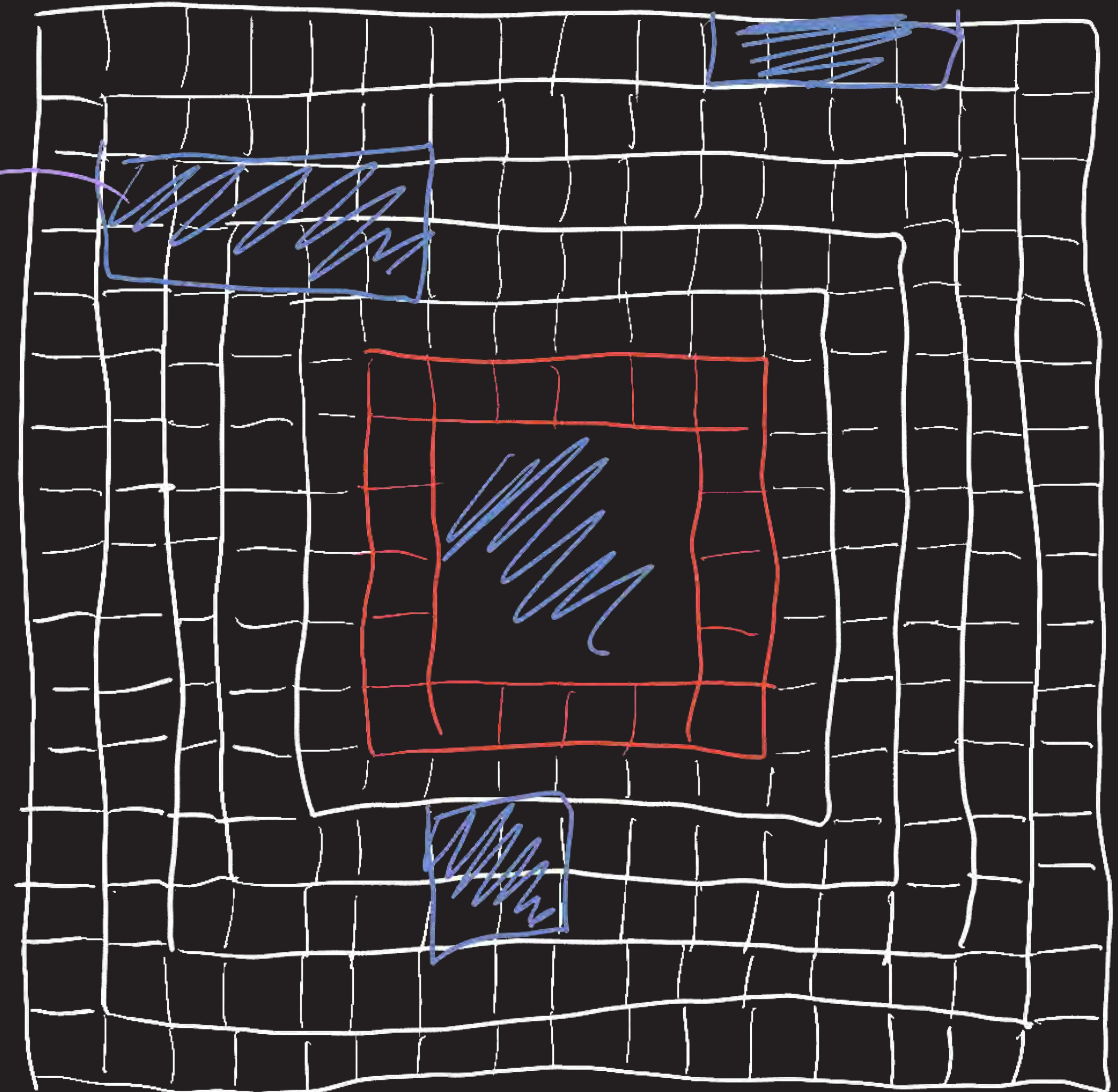
Meanwhile, those 300 plus shootings a year continue to take our friends and family from us, and those fortunate enough to survive are left to cope with new traumas, scars, and nightmares that will follow them for the remainder of their lives.

This thesis addresses this dissonance between our fear of others and the unabated domestic terrorism in the U.S.

DRIVING FORCES

We remember those we lost, but forget those who must now overcome new traumas
How can we remind everyone of the severity of domestic terrorism
How can my past, experience, and knowledge set from the military contribute

Void



Initial Sketch

SITE

The National Mall in Washington D.C. is filled with program exploring and denoting the story of the U.S. However, the story of the nations rooted entanglement with gun violence and domestic terrorism are currently absent from this program. Additionally, it is the center of the nations political power and policy creation.

This makes the National Mall the ideal location for a memorial that serves to remind us of the severity and regularity of domestic terrorism, and give space to the scarred survivors, families, and friends of mass shootings

1000 ft

N

SCALAR STUDY AND COMPONENTS

To better understand scale, design began with comparisons scalar comparisons of the Washington Monument, the desired memorial dimensions, and possible materials. Ultimately selecting Hesco Barriers, Reclaimed Utility Poles, Soil, and Camouflage Netting, this initial study determined the dimensions of the sacred core and tectonic logic of the memorial.



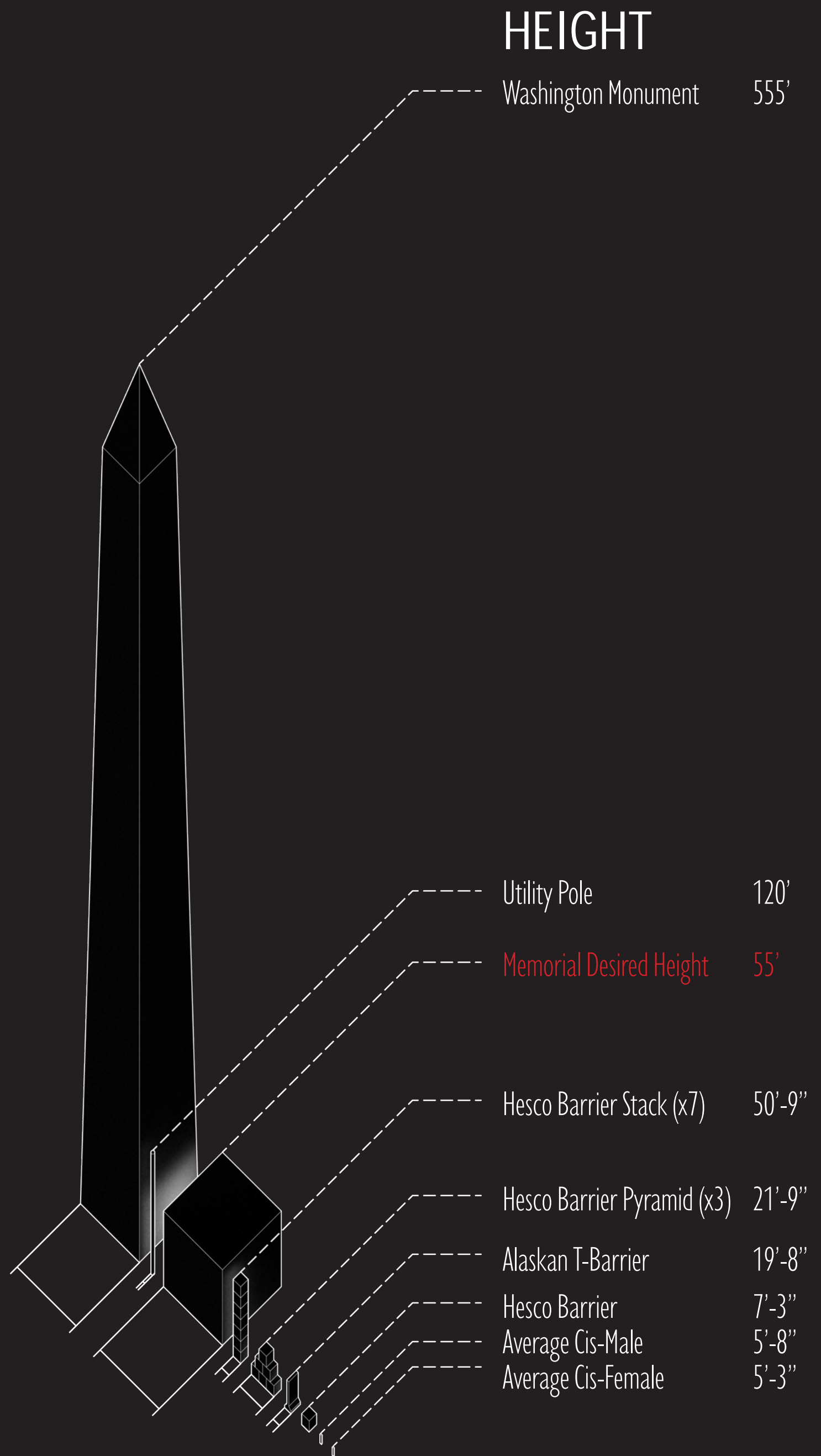
Reclaimed Utility Poles



Soil



Hesco Barriers

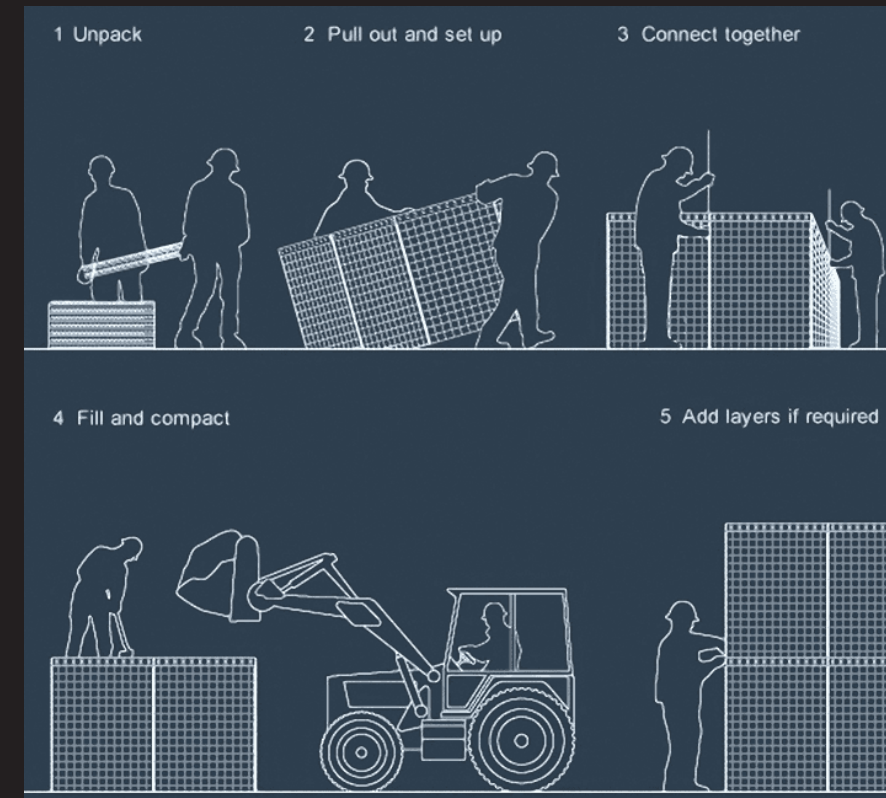


HEIGHT
Washington Monument 555'

WIDTH
Washington Monument 55'
Utility Pole 2'-6"
Memorial Desired Width 55'
Hesco Barrier 7'
Hesco Barrier Pyramid (x3) 21'
Alaskan T-Barrier 5'-11'

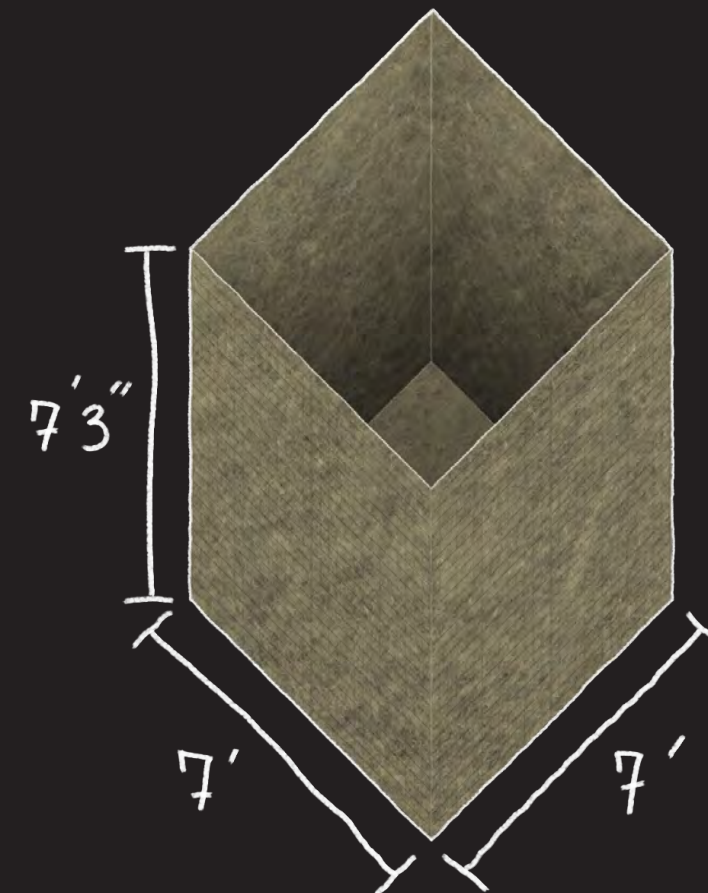
Utility Pole 120'
Memorial Desired Height 55'
Hesco Barrier Stack (x7) 50'-9"
Hesco Barrier Pyramid (x3) 21'-9"
Alaskan T-Barrier 19'-8"
Hesco Barrier 7'-3"
Average Cis-Male 5'-8"
Average Cis-Female 5'-3"

MATERIAL LANGUAGE



$3/16'' \text{ } \phi \text{ } \sim 10$

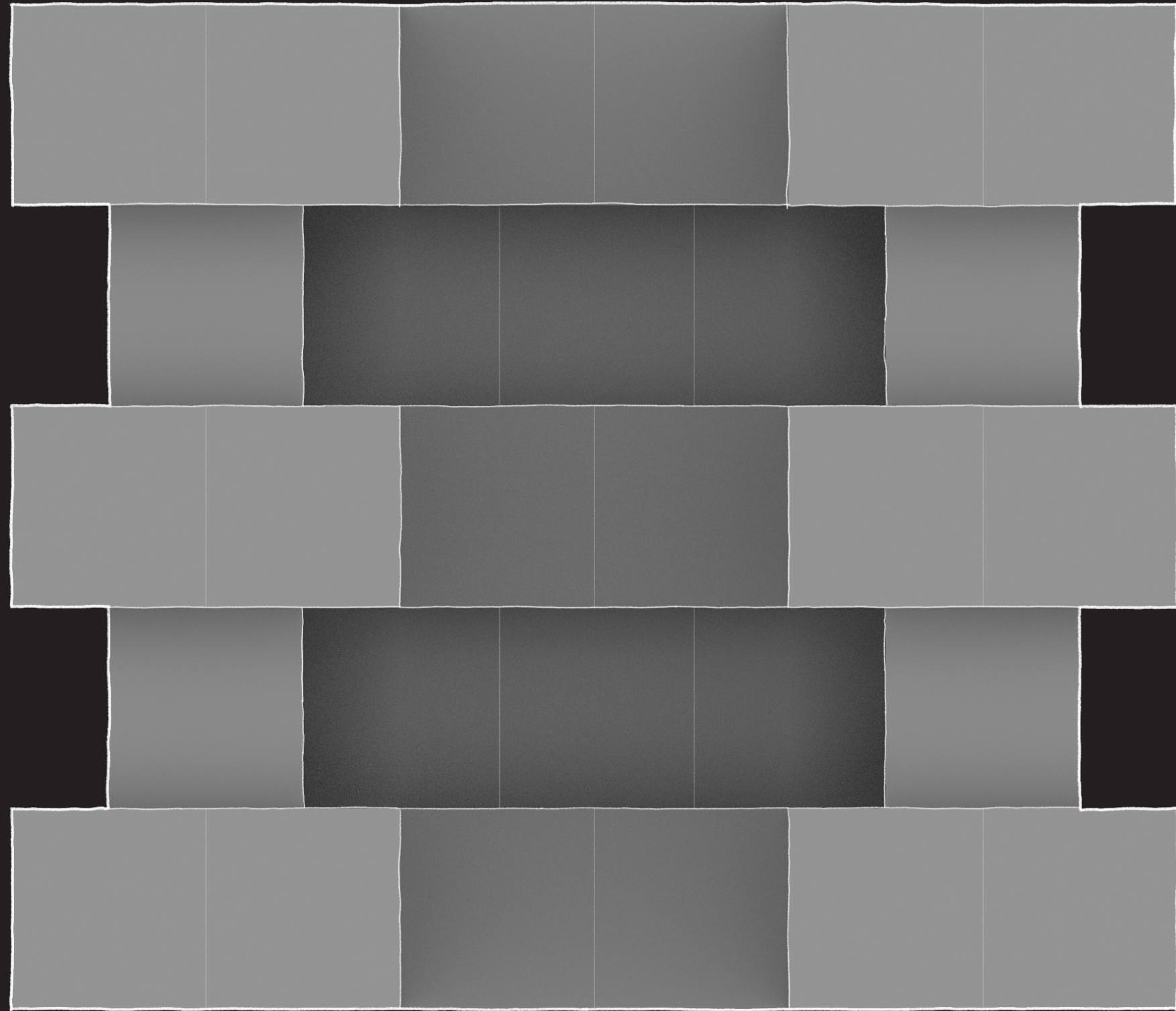
- ## Materials
- Welded collapsible wire mesh
 - Heavy duty fabric liner
 - Earth/stone fill



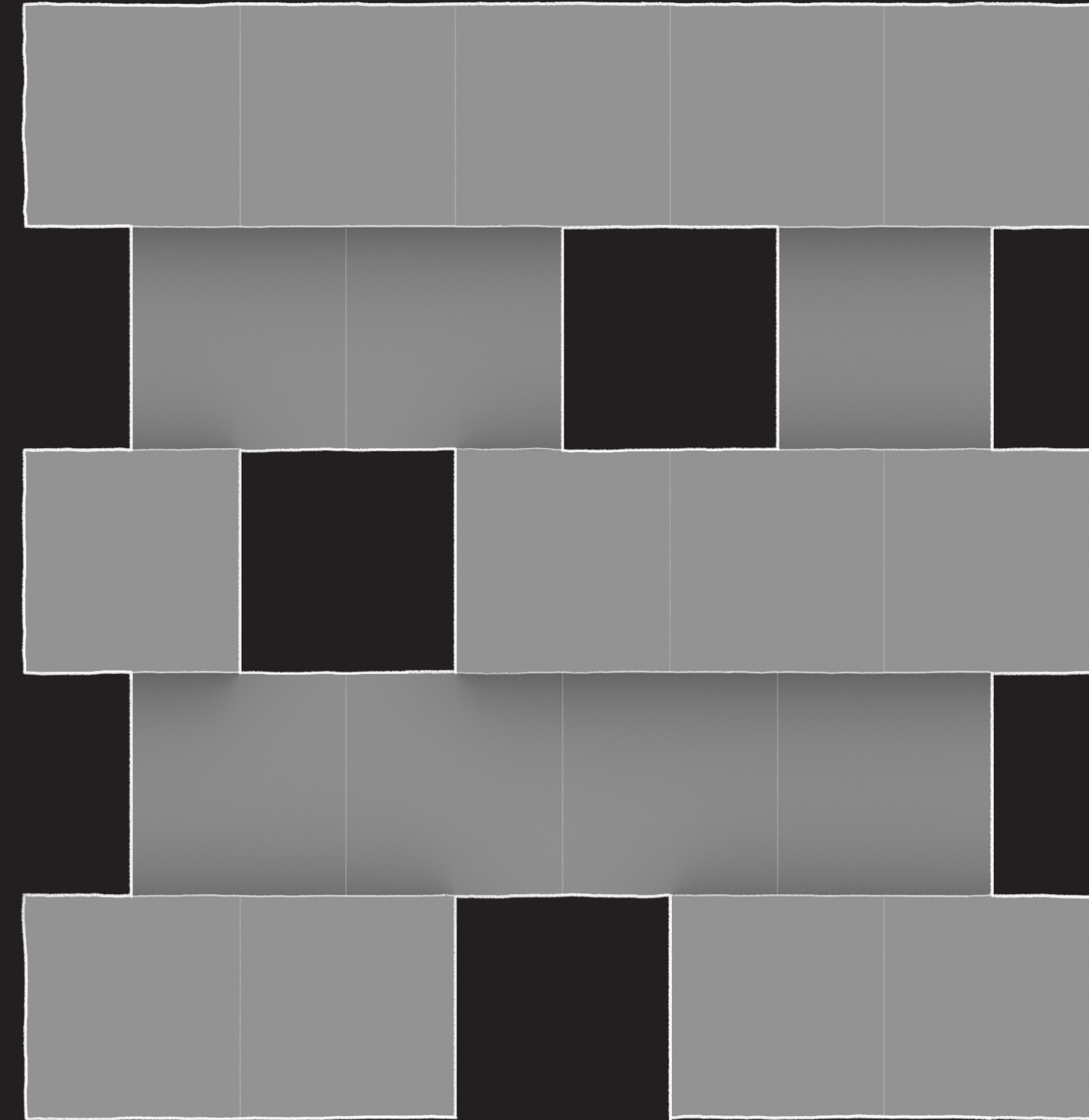
3" o.c.



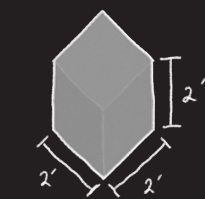
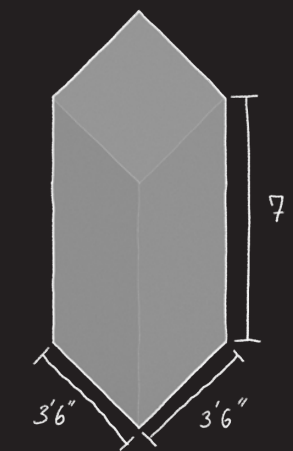
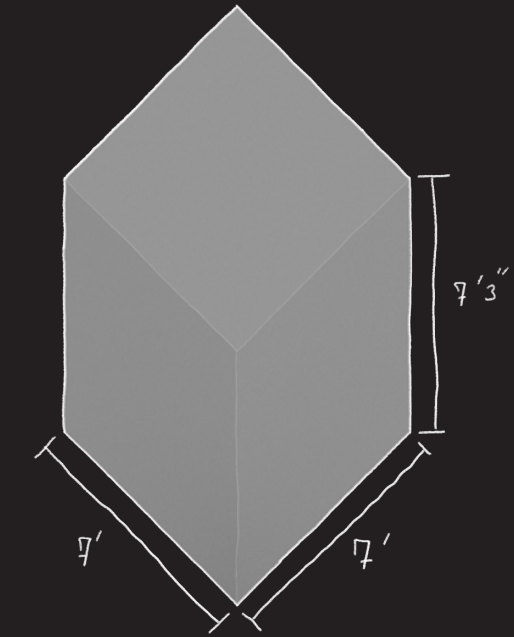
SYSTEM LOGIC



VOID



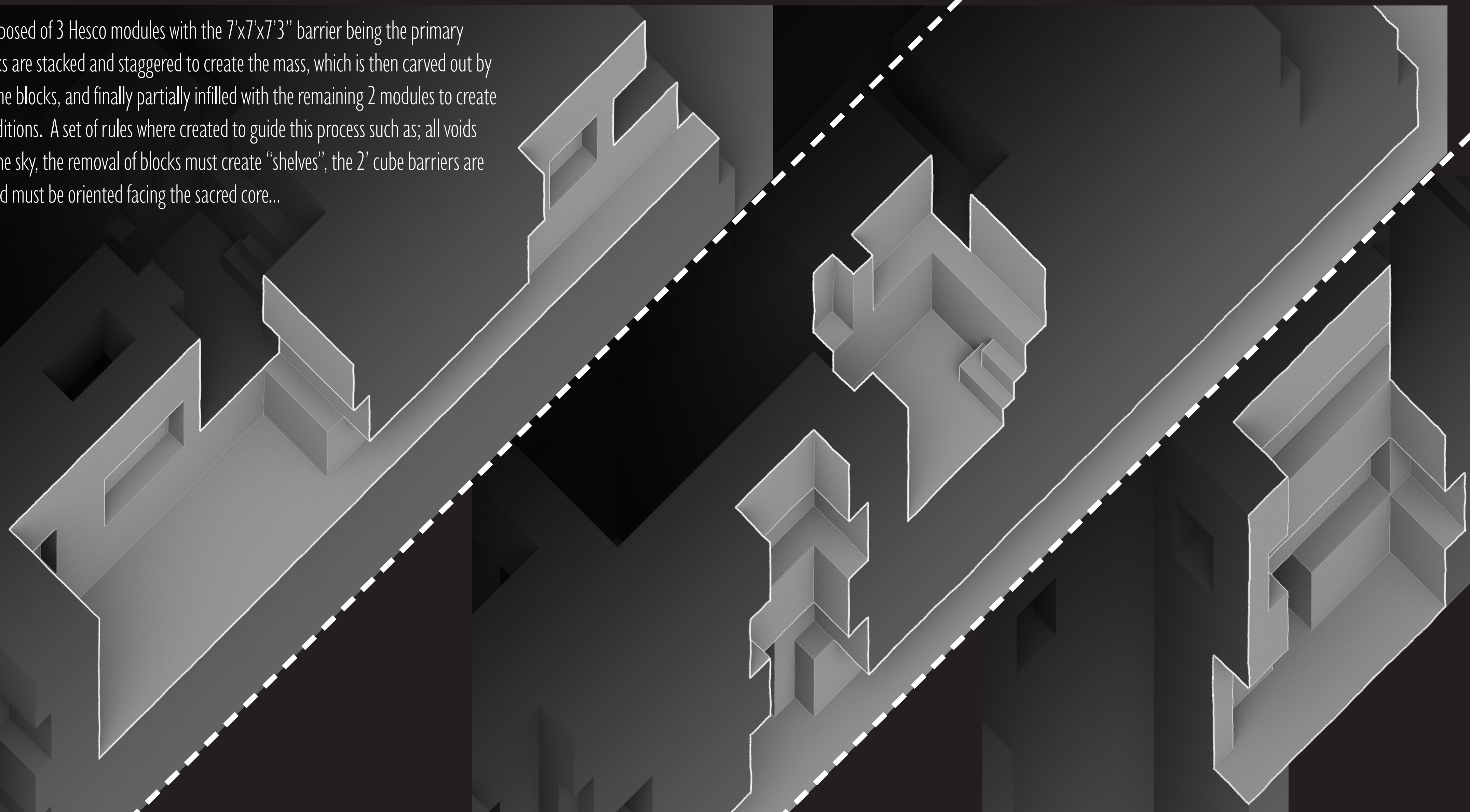
PASSAGE



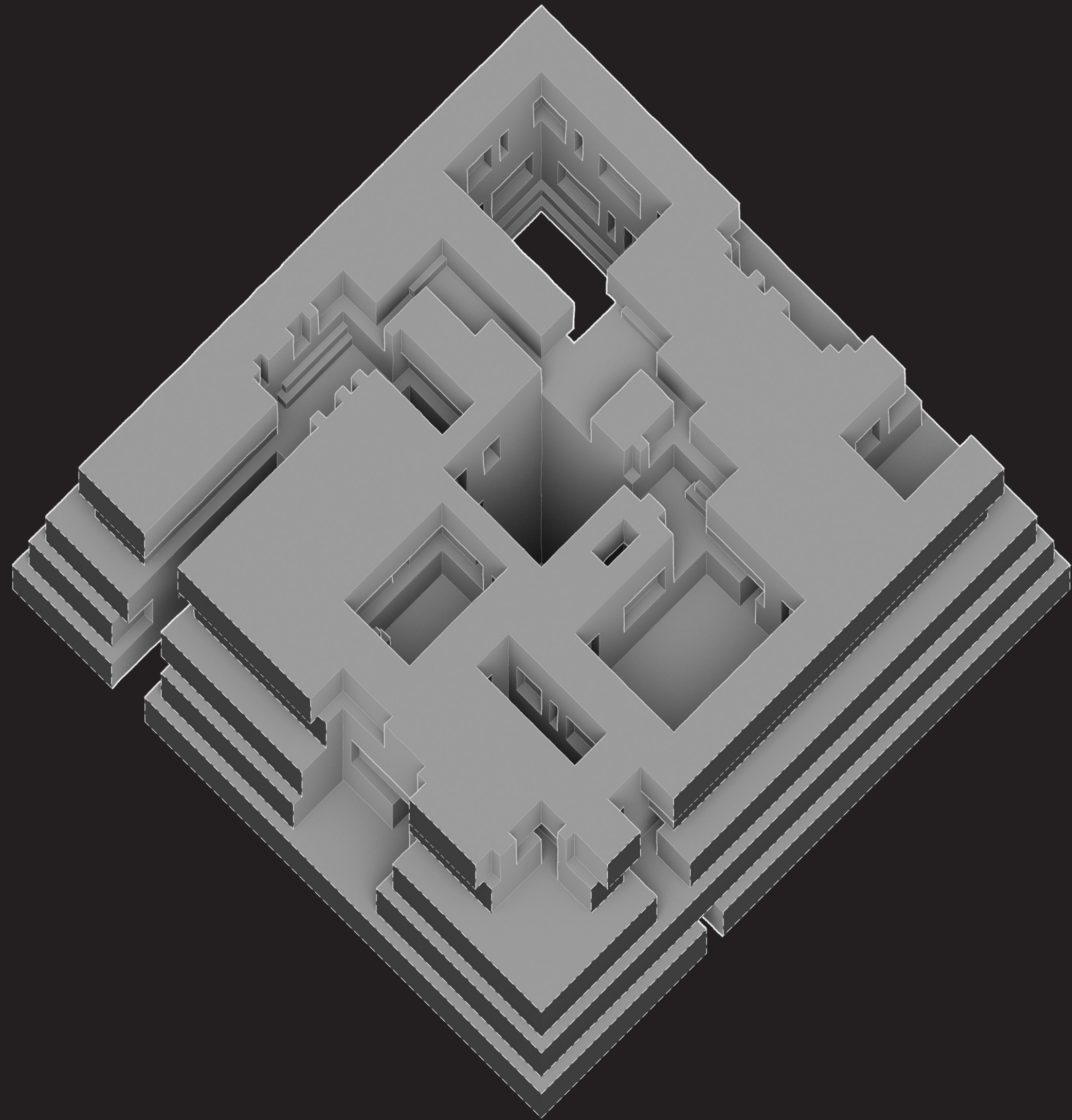
MODULES

SYSTEM LOGIC

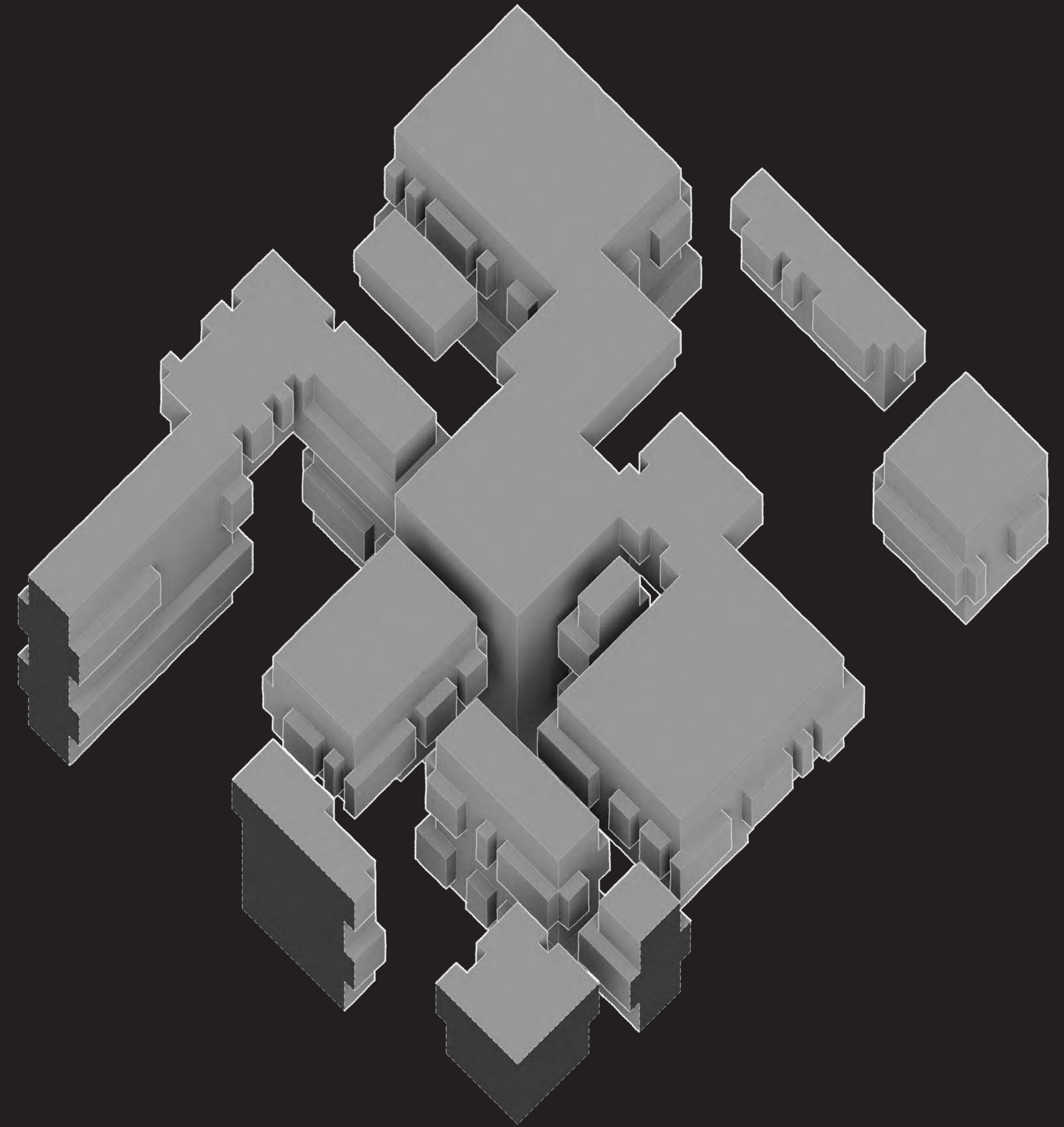
The project is composed of 3 Hesco modules with the 7'x7'x7'3" barrier being the primary block. These blocks are stacked and staggered to create the mass, which is then carved out by the removal of some blocks, and finally partially infilled with the remaining 2 modules to create varied spatial conditions. A set of rules were created to guide this process such as; all voids must be open to the sky, the removal of blocks must create "shelves", the 2' cube barriers are used as seating and must be oriented facing the sacred core...



SYSTEM LOGIC



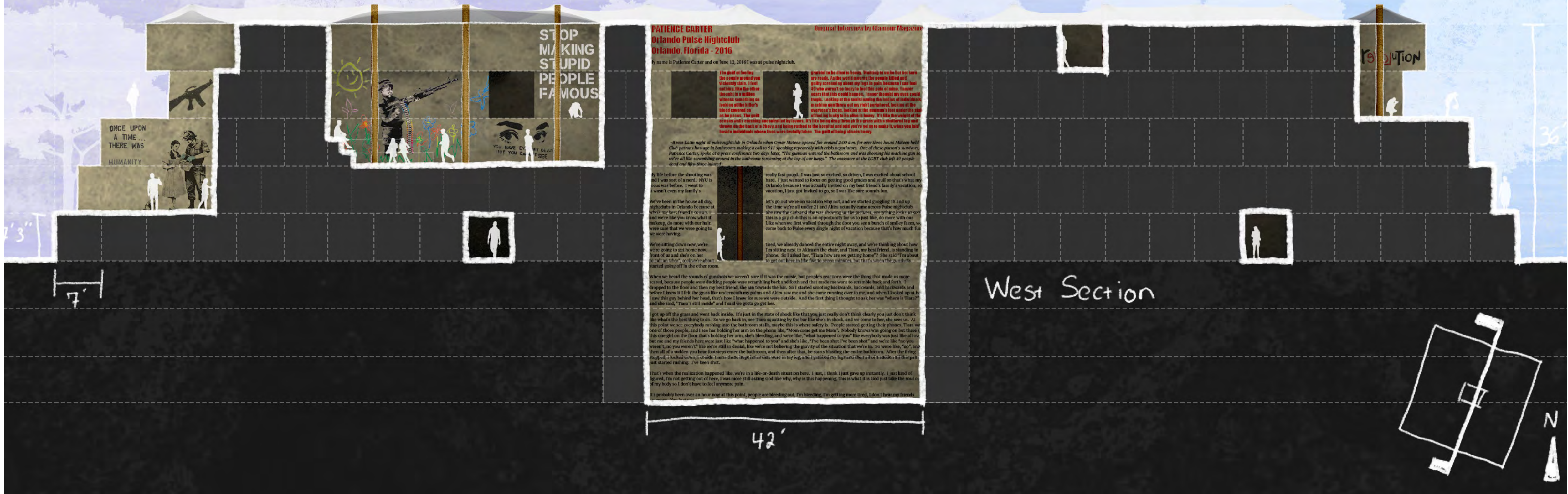
Mass Axon



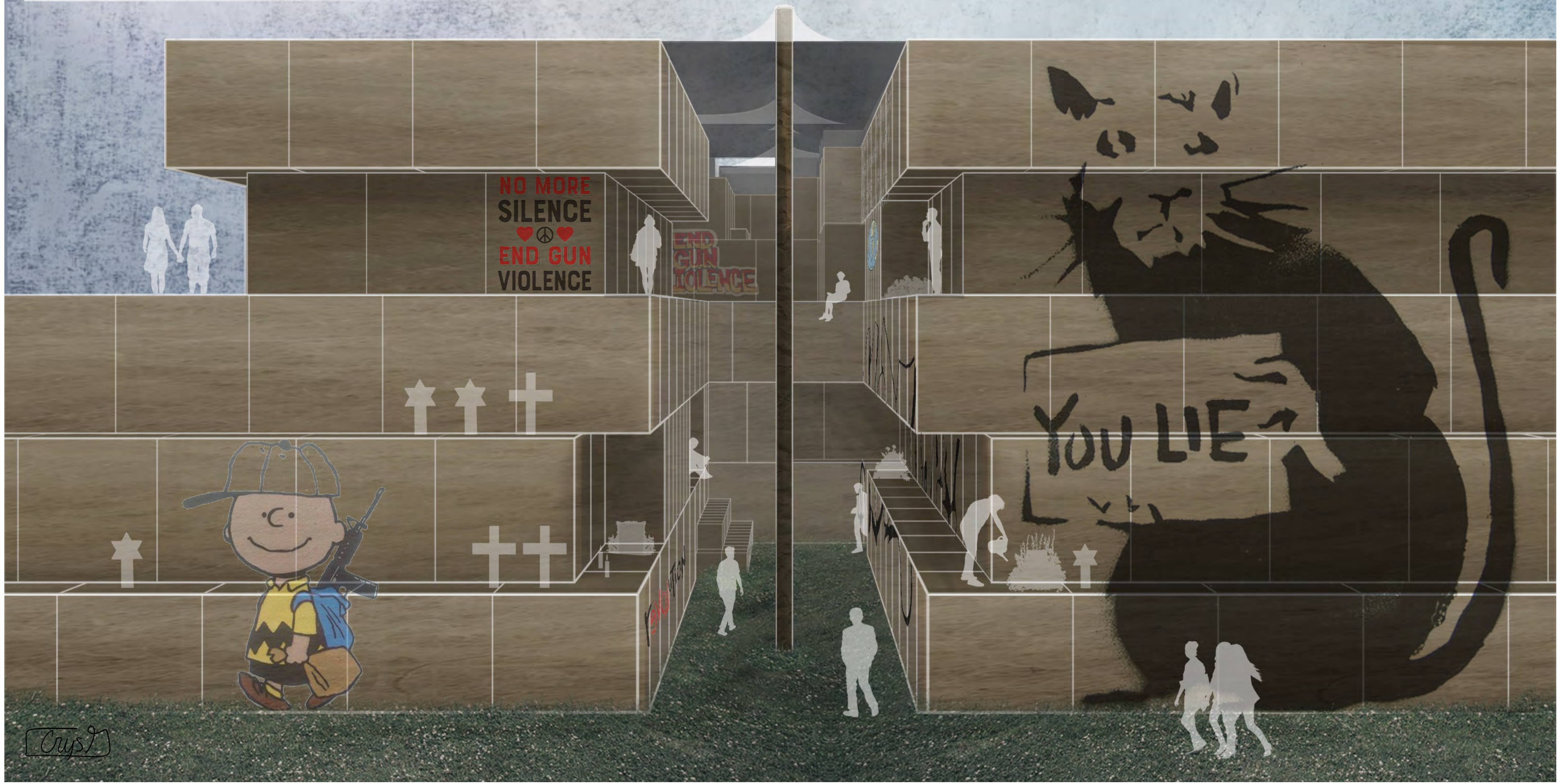
Void Axon

SACRED CORE

At the center of this mass lies the sacred core. Here, the stories and experiences of survivors cover the walls, preserved and untainted by external forces. Users must navigate the network of voids to reach openings that allow them to read these perspectives.



USER ENGAGEMENT



Cruis

USER ENGAGEMENT

Where the core is defined and protected, the surrounding voids are left for users to determine their program. Each void in its unique spatial condition can then equally be unique in its programmatic use. Where a larger void, such as this one, might be suited for gathering, speaking, debating, rallying, or exhibiting, a smaller void may be more suited for solace, quiet remembrance, honoration, or reflection. Each void is then made personal and ultimately legitimized through their respective use.



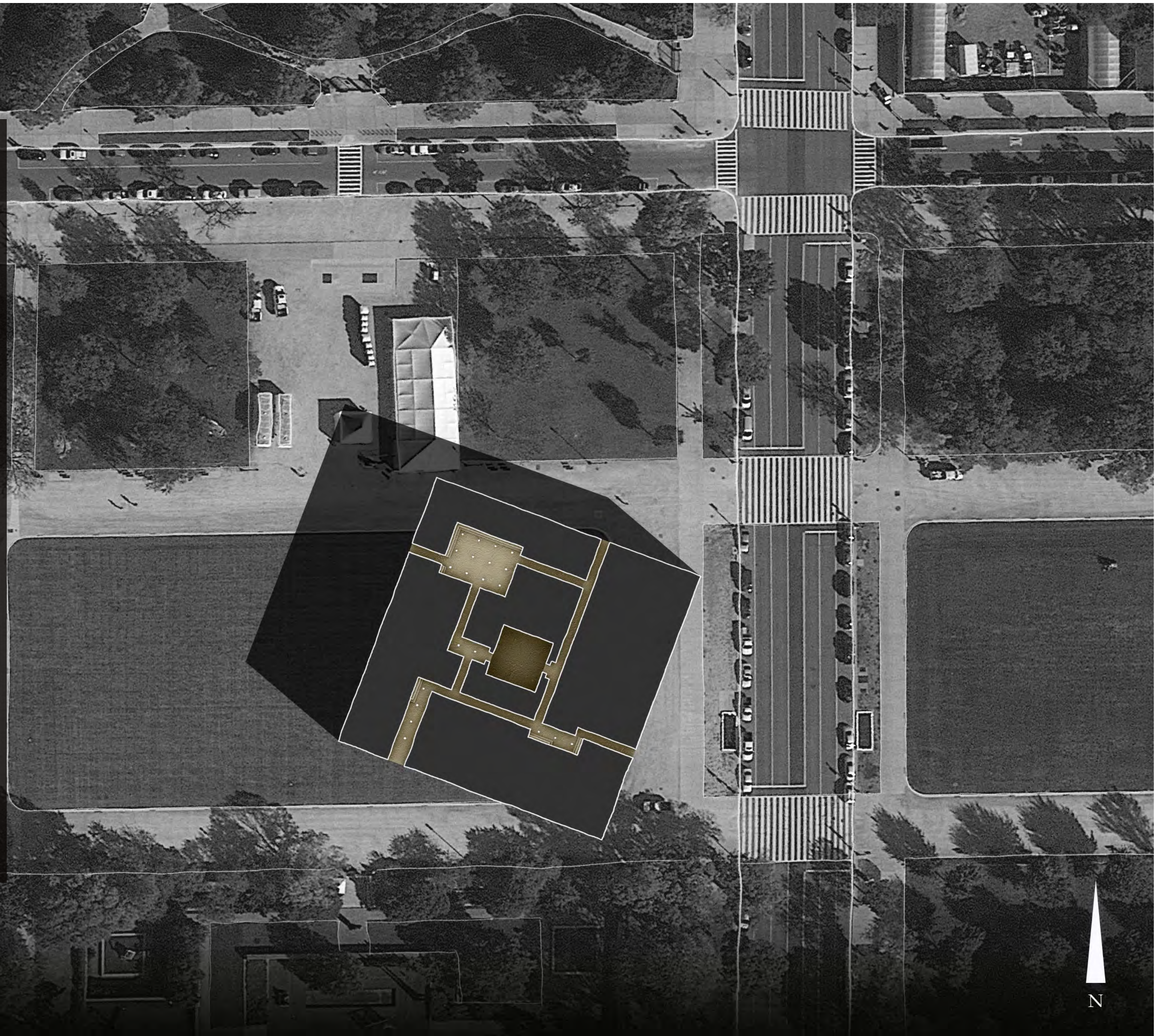
SITE PLAN

Seen in the additional video, the memorial is never complete. As gun violence continues to be an omnipresent threat to us, so too does this memorial threaten our capitol and the nation. With each successive mass shooting, a new layer of barriers is added to the perimeter of the project, causing it to be constantly unfinished and regularly expanding.

This ever-growing nature of the project creates a protective barrier to the core, only accessed at its edge by the network of voids. Additionally, the mass creates growing obstruction and threatening consumption of the context. As is seen in the site plan, this memorial acts in protest. Located at the center of the national mall, it breaks the preexisting contextual rules: interrupting established axes, obstructing circulation and infrastructure, eliminating views...

As the memorial continues to grow and consume, it also increasingly demands attention from bystanders. Through its obstruction and consumption, people must make choices about how they interact with the project. Do they enter, go around, simply observe from afar or ignore entirely.

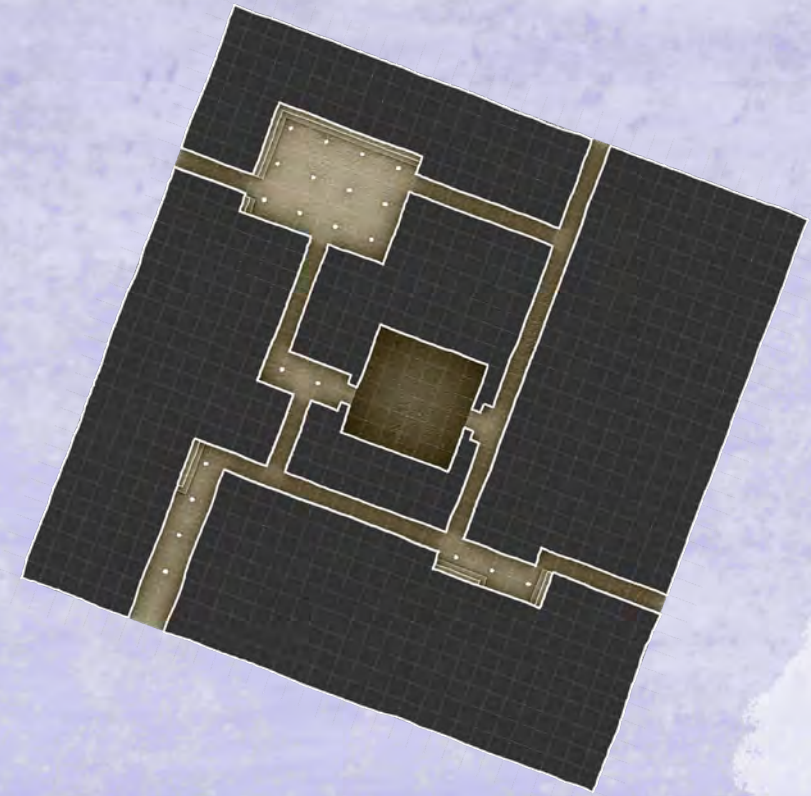
As a result of the systems logic, the ground plan renders itself rather simple as a series of corridors and voids branching out from the core. With each level above, the plan gains complexity, creating a labyrinthian network causing users to encounter void after void. Yet, the memorial remains navigable as clues such as the seating orientation hint to the direction of outside and in.



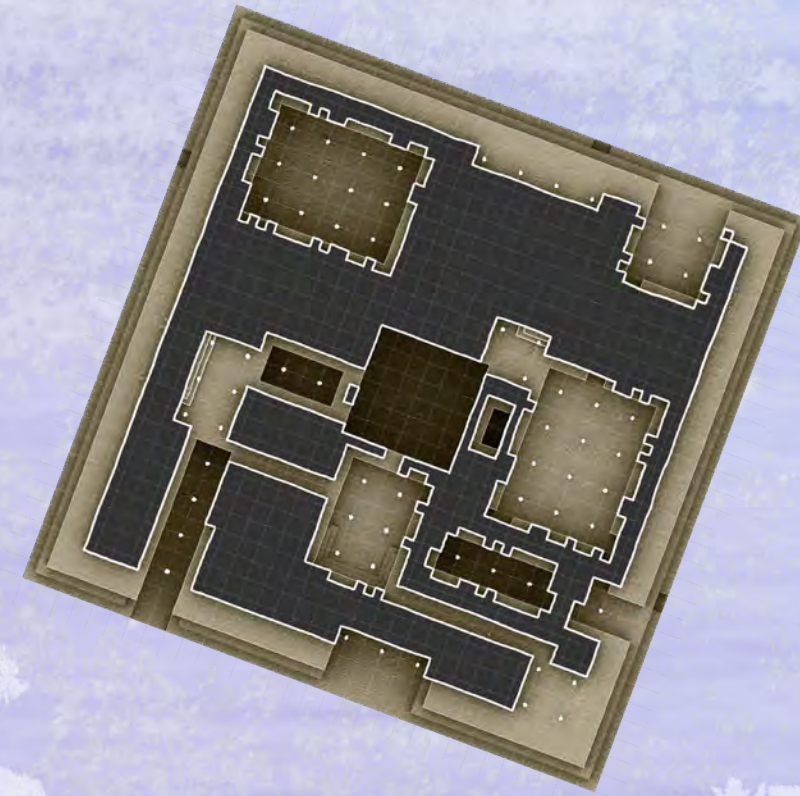
90 ft

N

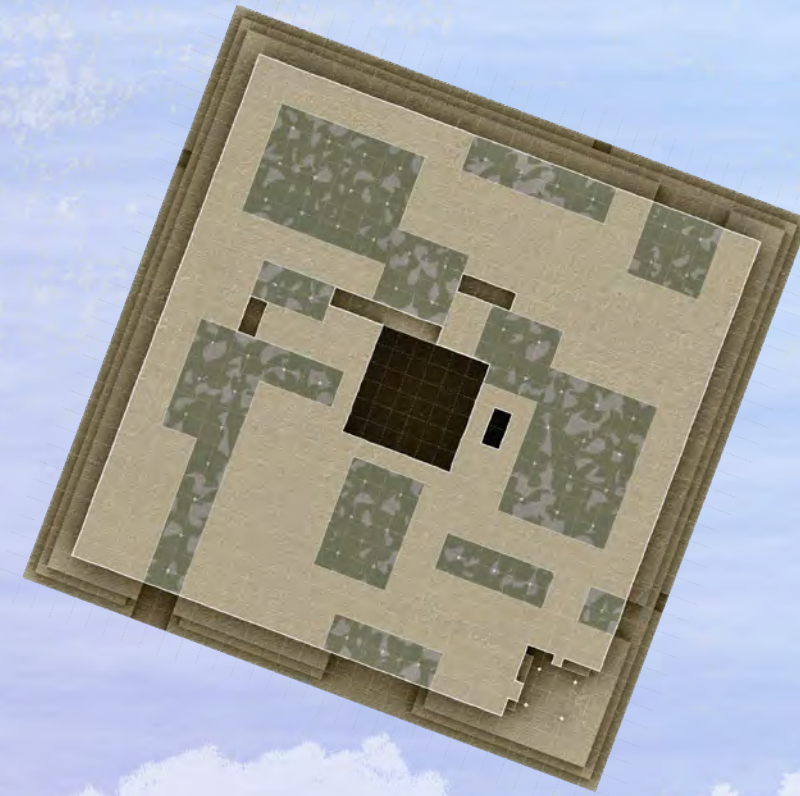
DRAWINGS



Ground Floor



4th Floor



Roof Plan



E Section Perspective



Poem written by Patience Carter

The guilt of feeling grateful to be alive is heavy.

Wanting to smile but not sure if the people around you are ready. As the world mourns the people killed and viciously slain. I feel guilty screaming about my legs in pain, because I can feel nothing, like the other 49 who weren't so lucky to feel this pain of mine. I never thought in a million years that this could happen. I never thought my eyes could witness something so tragic. Looking at the souls leaving the bodies of individuals, looking at the killer's machine gun threw out my right peripheral, looking at the blood covered on everyone's faces, looking at the gunman's feet under the stall as he paces.

The guilt of feeling lucky to be alive is heavy. It's like the weight of the oceans walls crushing uncontrolled by levees. It's like being drug through the grass with a shattered leg and thrown on the back of a Chevy, and being rushed to the hospital and told you're going to make it, when you laid beside individuals whose lives were brutally taken.

The guilt of being alive is heavy.



PATIENCE CARTER

Orlando Pulse Shooting - Orlando, Florida 2016

47 Dead | 58 Injured