

curtains + couture

"The curtain wall, traditionally an icon of modern architecture, takes its name from curtains, but it seems to be misnamed to begin with. It echoes the what structure does and is a direct translation of it, but it has the opportunity to be autonomous and have a defined form and function. The thesis takes the term curtains seriously and advocates for design specificity in a façade system. Instead of following the linear translation from curtains to curtain wall, the thesis finds applied complexities within the territory of the curtain wall. The curtain wall will be redefined through intersected properties of curtains and couture."

curtains



spatial transformation

+

textile tectonics

+

silhouette transformation



couture



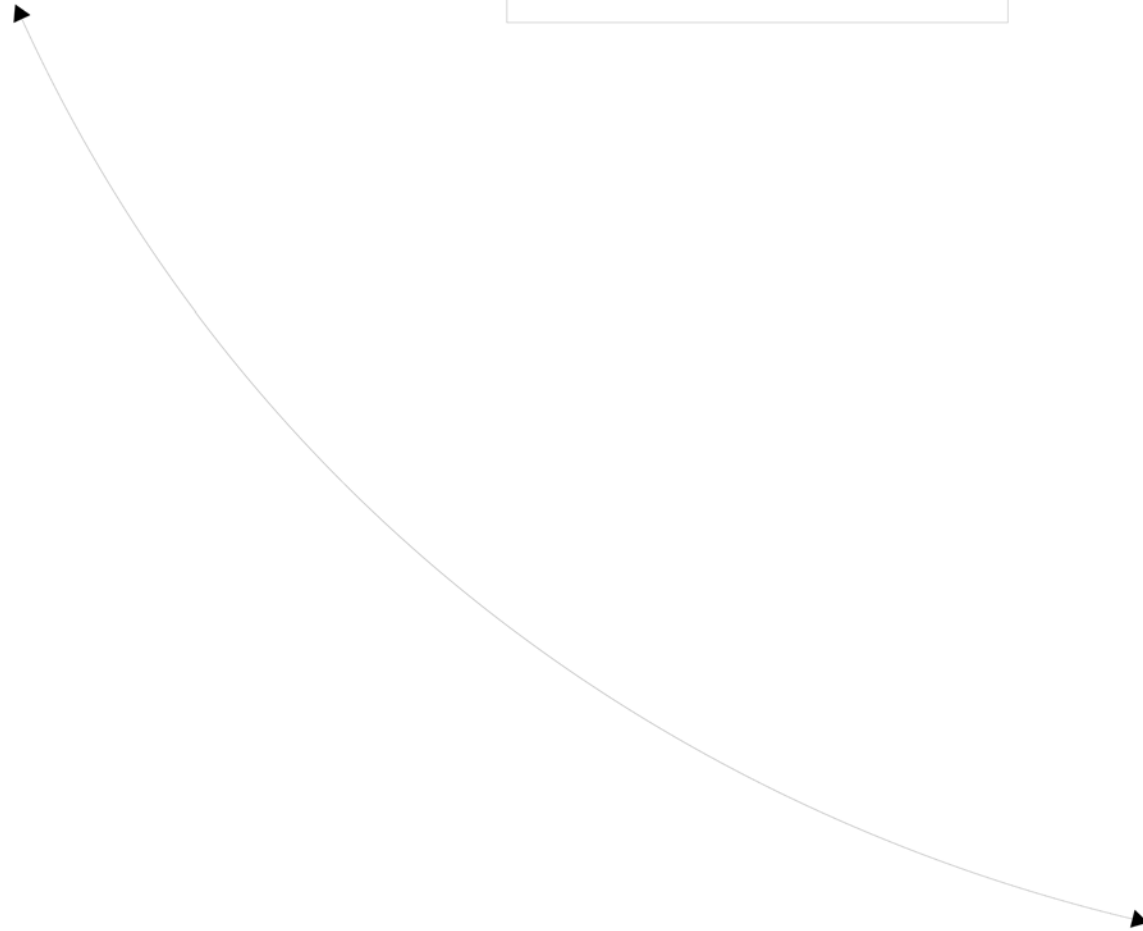
hangs on body

+

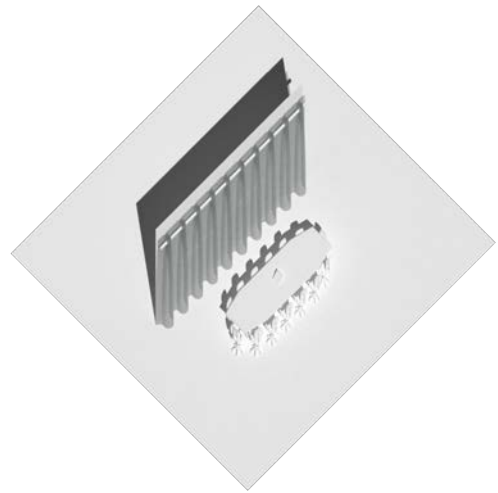
hangs on structure



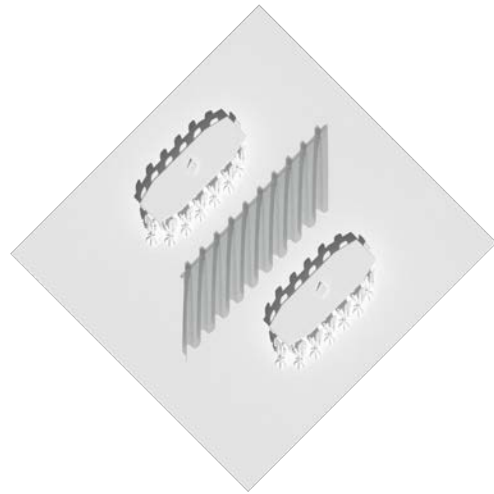
curtain wall



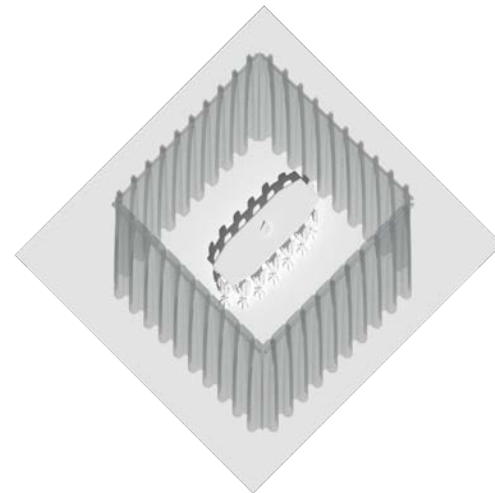
curtains



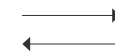
climatic shield



spatial organizer



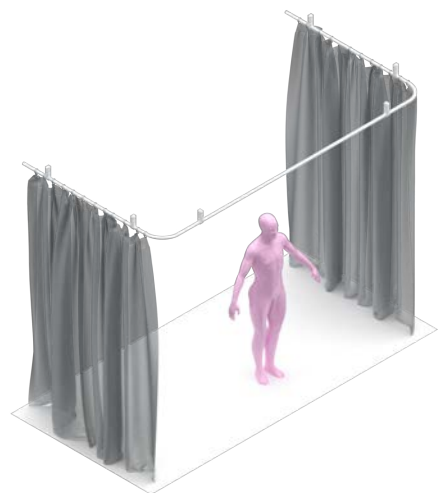
spatial divider



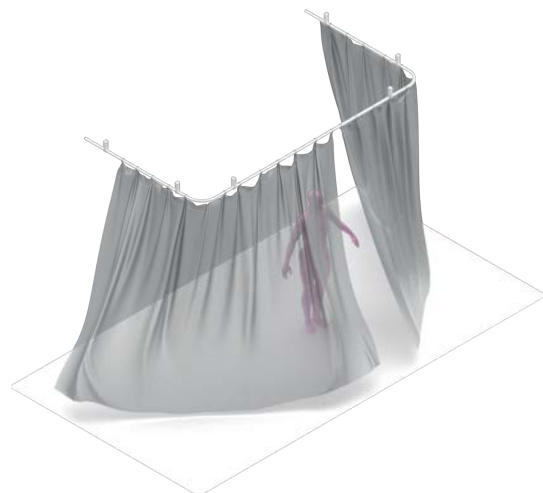
curtain wall



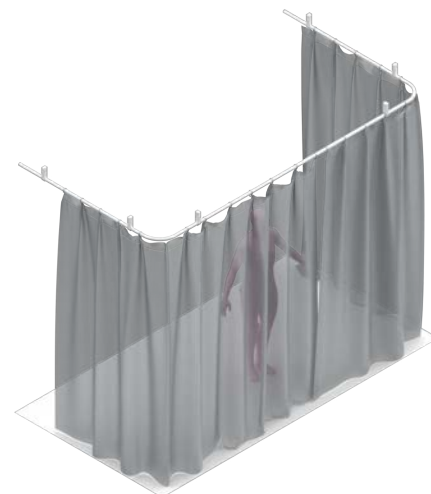
curtain wall



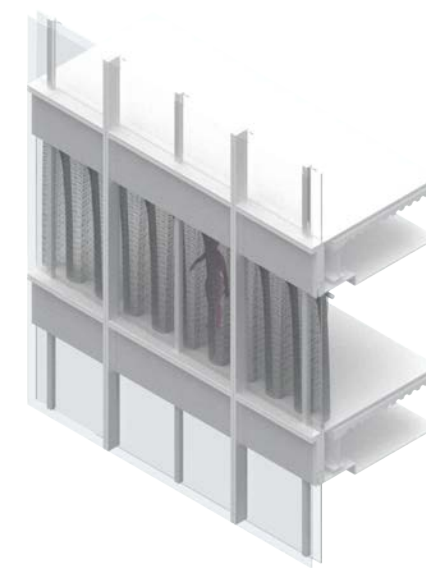
reveal



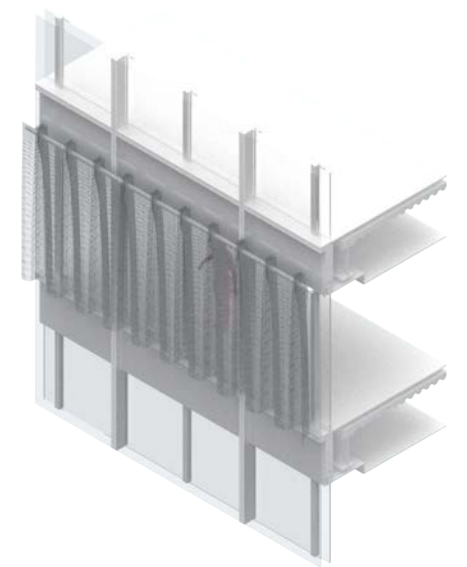
reveal + conceal



conceal

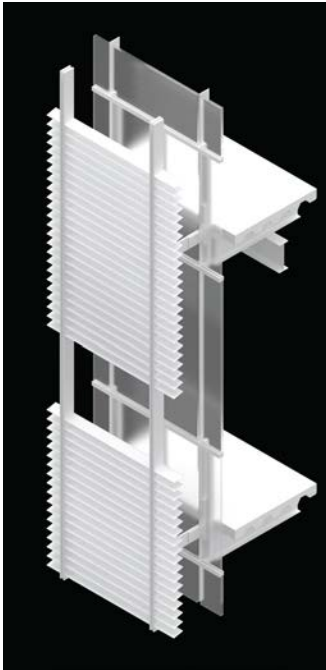


curtain wall & curtain



curtain & curtain wall

curtain wall hangs on structure



Fix to edge beam



Fix to floor

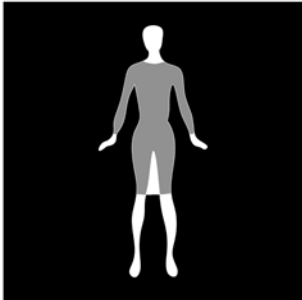


Fix to wind post



Fix between floor

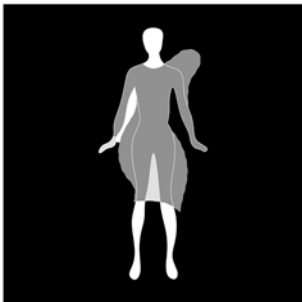
clothes hang on body



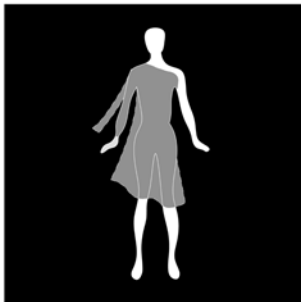
Body Drape



Symmetrical Deformations



Asymmetrical Deformations



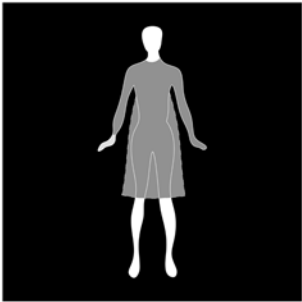
Deconstructive Transformation



Abstract Transformation



Formless Transformation



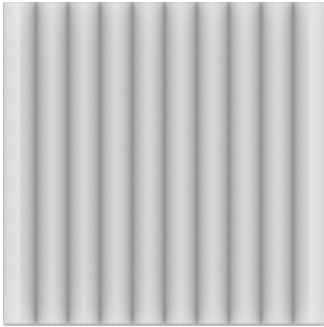
Functional Transformation



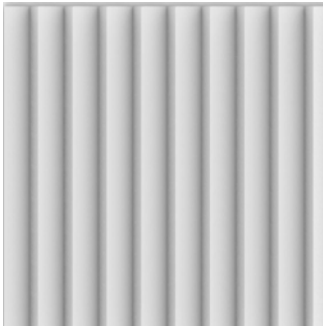
Multi - Functional Transformation

textile tectonics

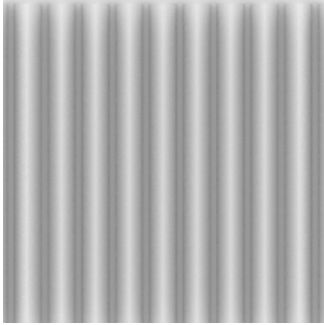
pleat



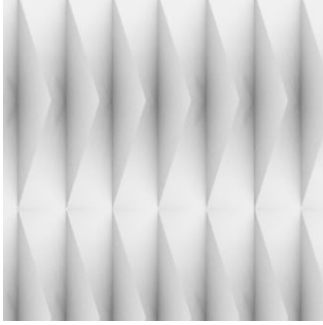
accordion pleats



knife pleats

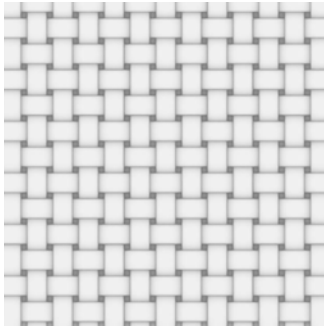


upright pleats

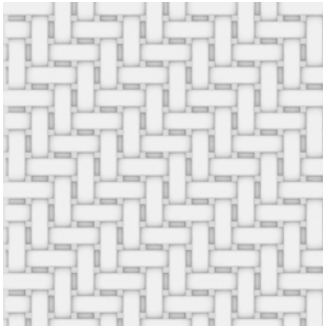


multiple v pleats

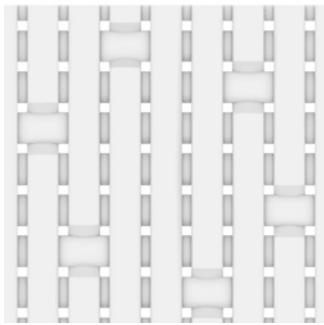
weave



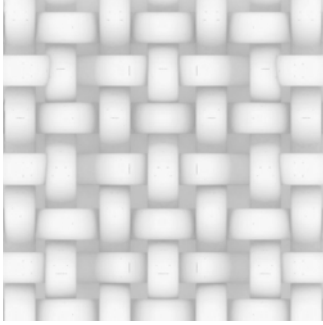
plain weave



twill weave



satin weave

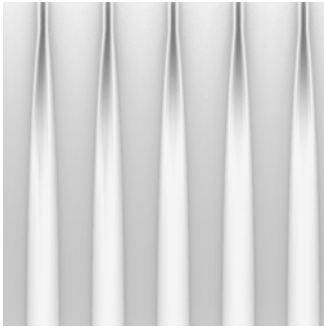


loop weave

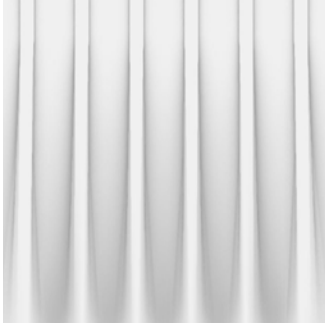
drape



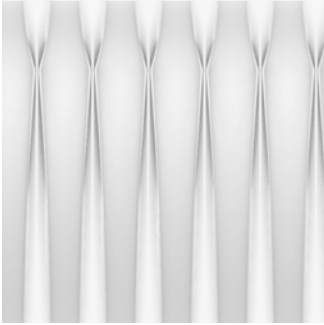
ripple fold drape



tailored pleat drape



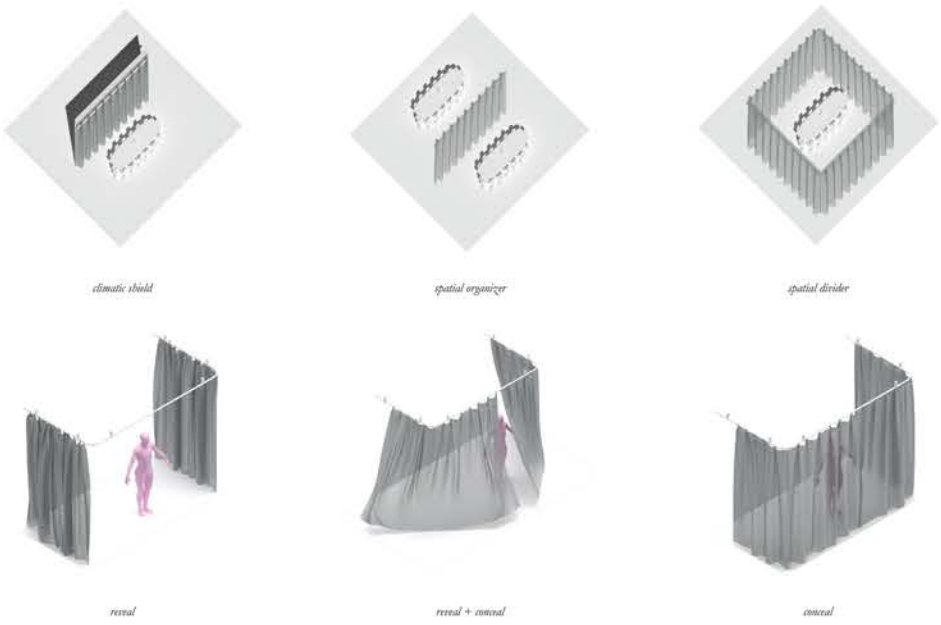
inverted pleat drape



pinch pleat drape

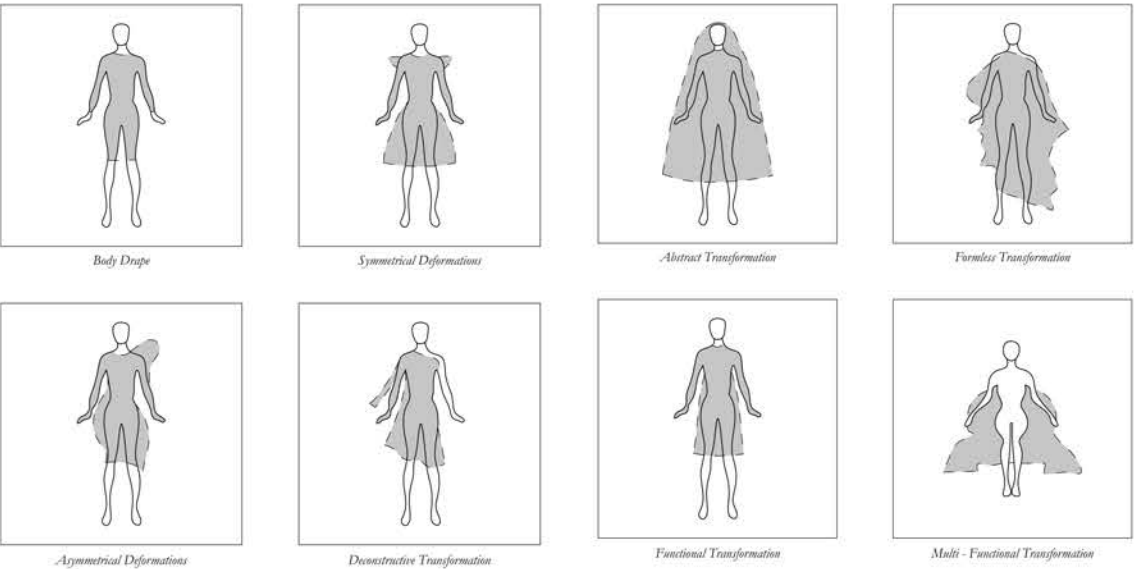
curtains

couture

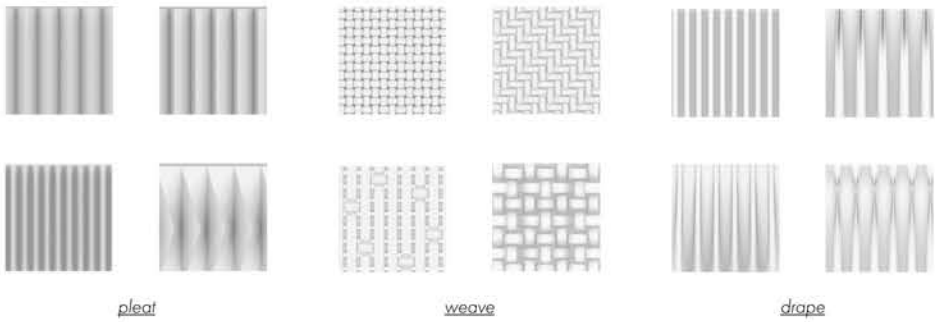


*spatial conditions;
manipulated visibility*

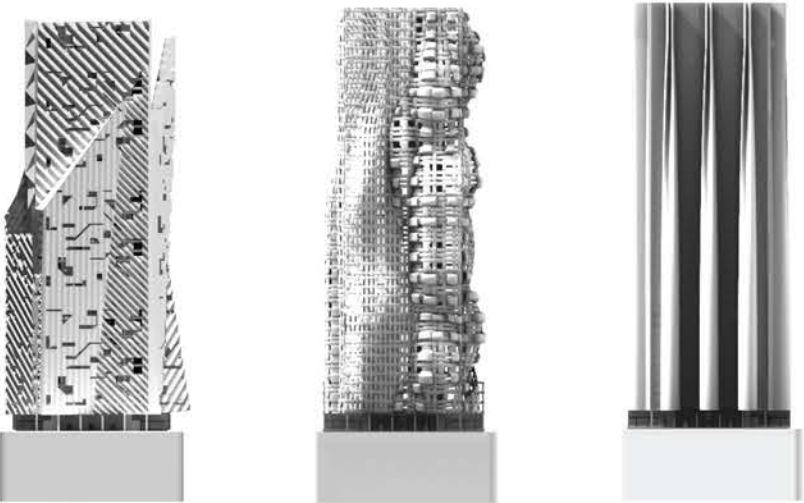
silhouette transformation



textile tectonics



curtain wall



object tectonics



interconnecting



overlapping



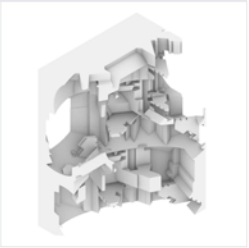
subtraction



fragmentation



heterogeneity



deconstruction



wrapping

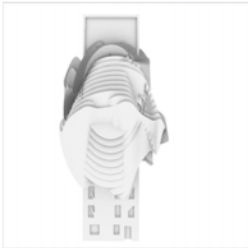


blurring



folding

building tectonics



wrapping



deconstruction



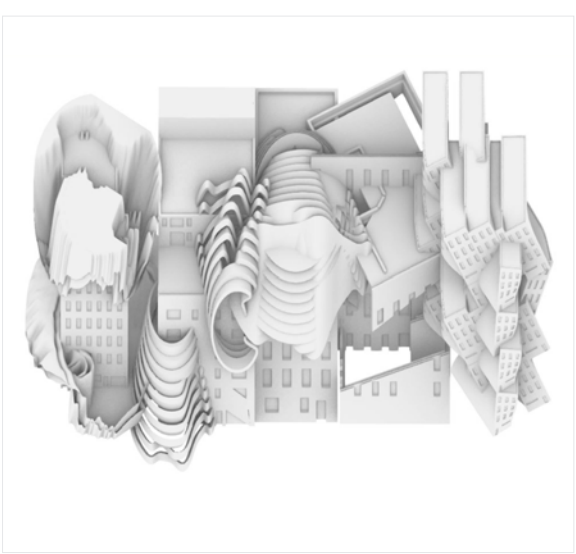
aggregation



floating



draping



combined construct

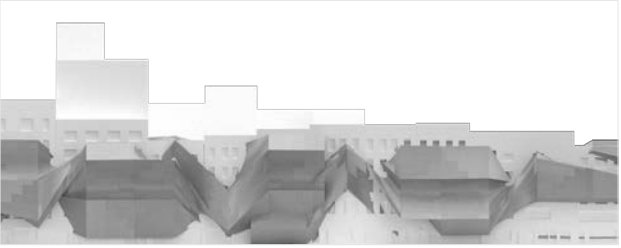
block tectonics



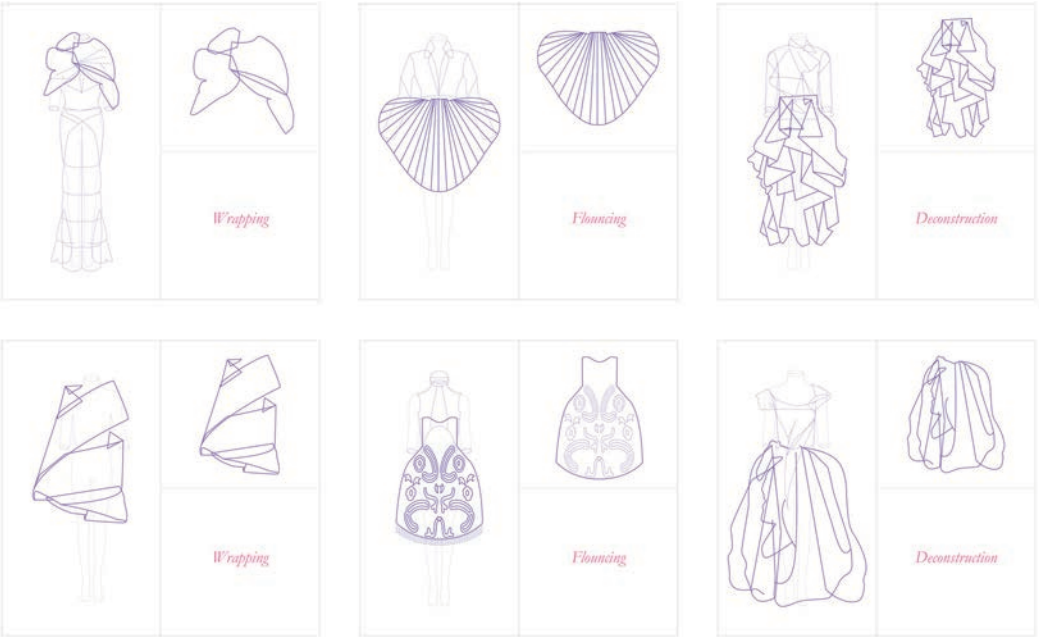
floating



deconstruction



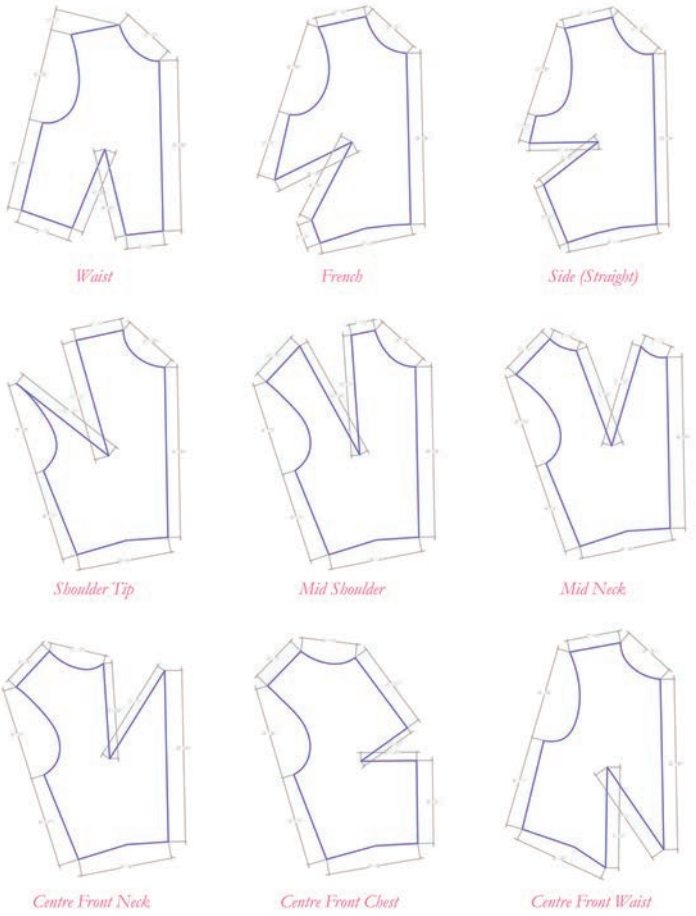
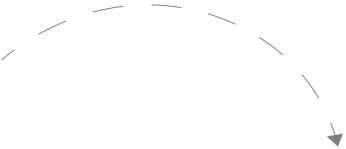
draping



couture analysis

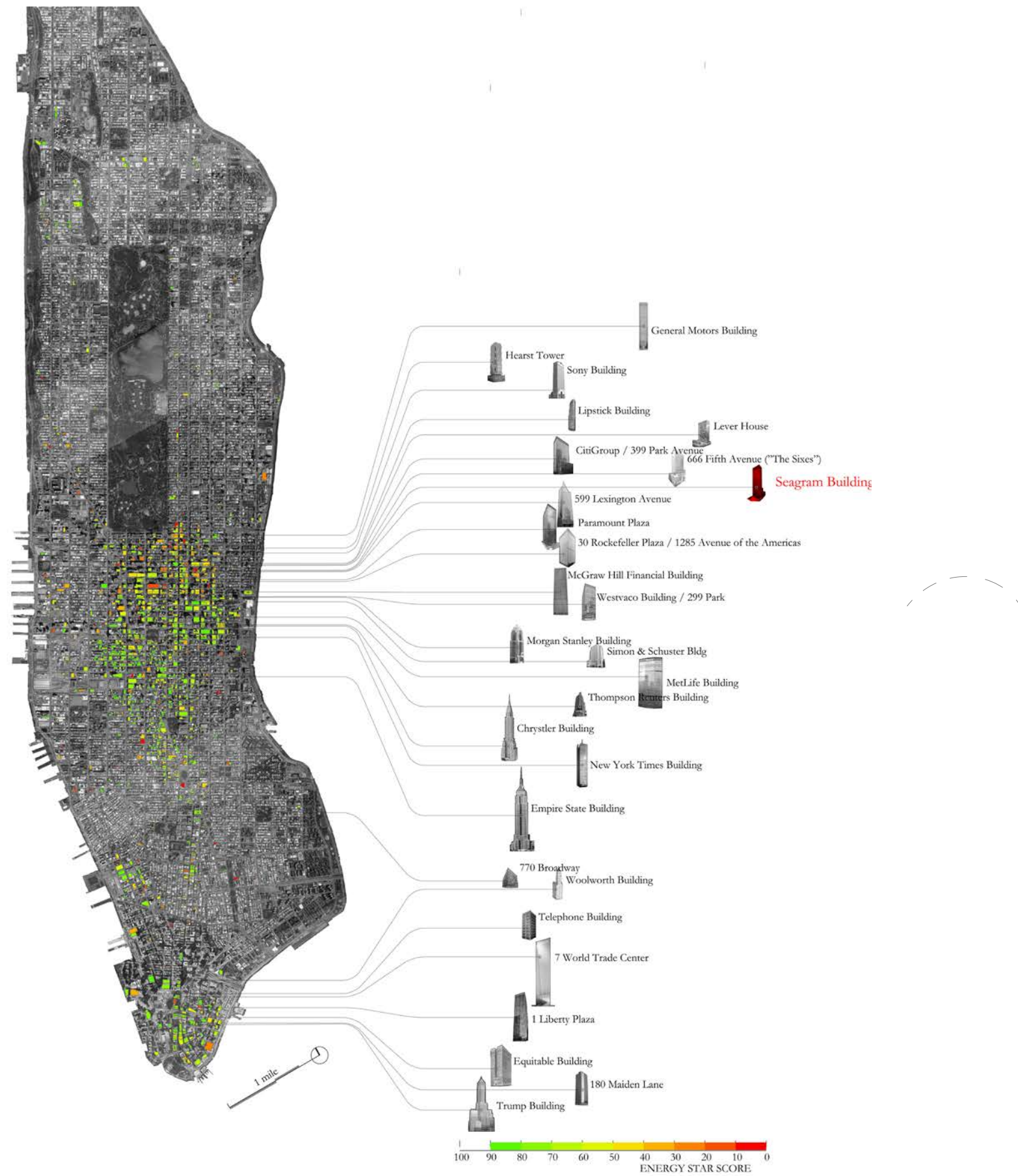


silhouette analysis



pattern making

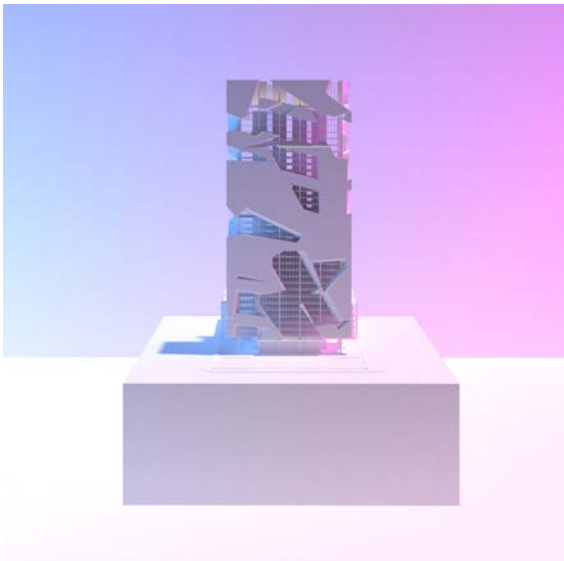




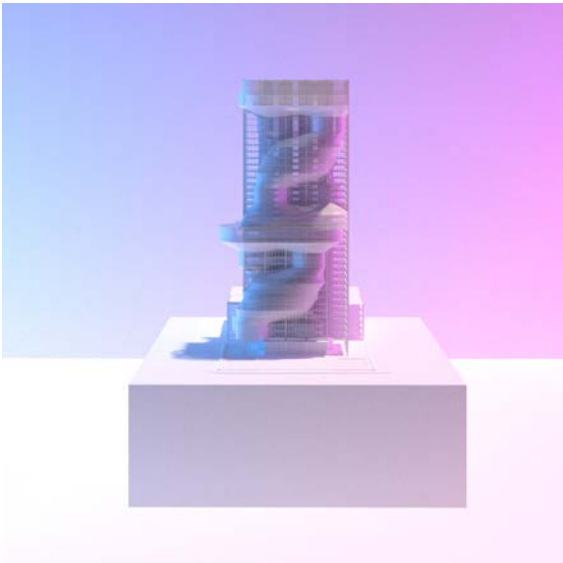
Seagram Building, Mies Van Der Rohe

Energy Star Score 3 / 100

silhouette tranformation



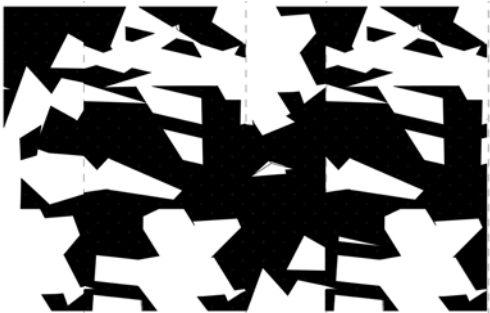
deconstruction



flouncing



draping



unfolded elevation



unfolded elevation



unfolded elevation



body silhouette



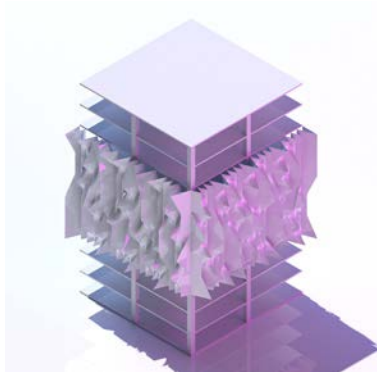
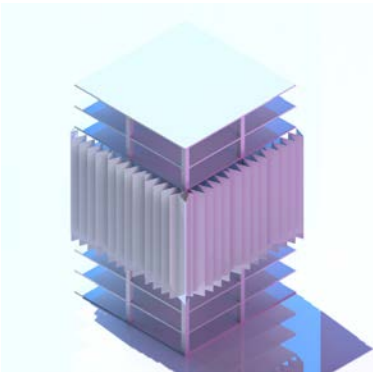
body silhouette



body silhouette

textile cladding

pleat

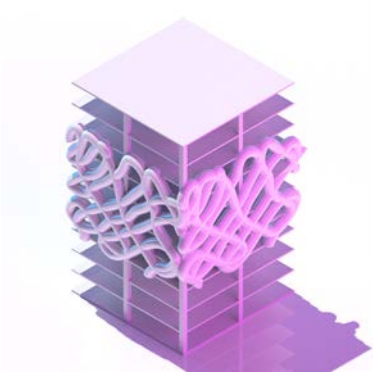
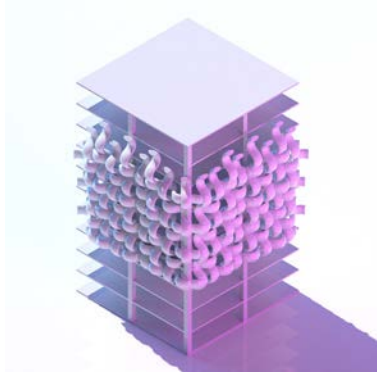
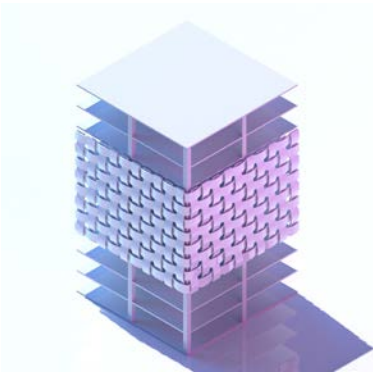


diffusion

axiality

specularity

weave

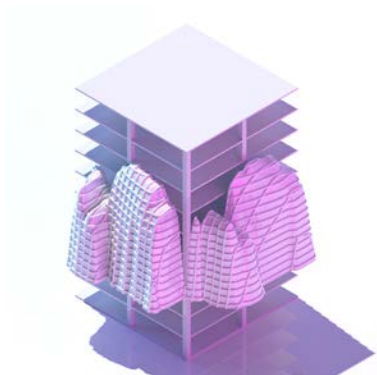


cellularity

enclosure

tactality

drape



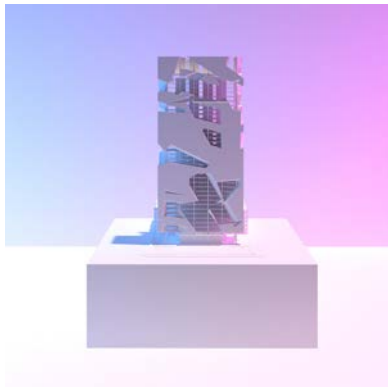
lightness

specularity

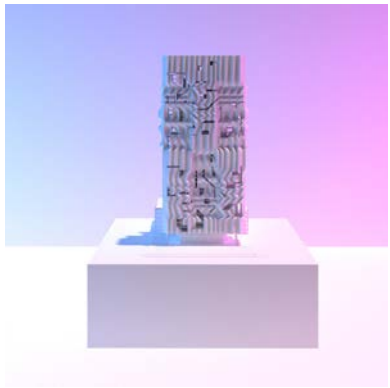
amorphousness

silhouette tranformation

textile tectonics



Deconstructed



Pleated



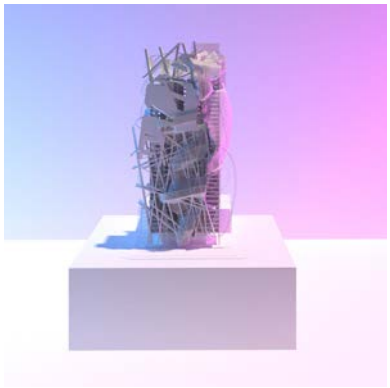
Flouncing



Draping

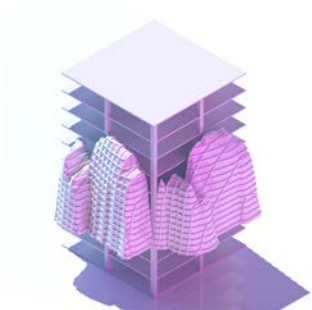
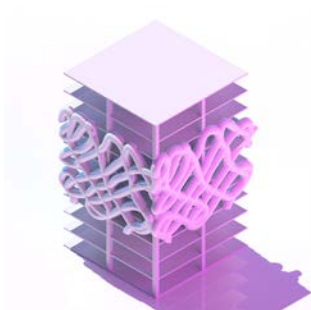
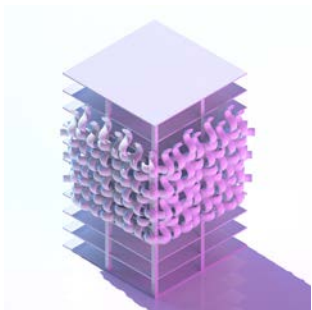
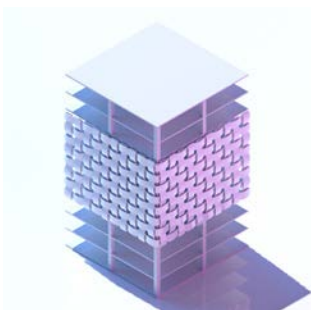
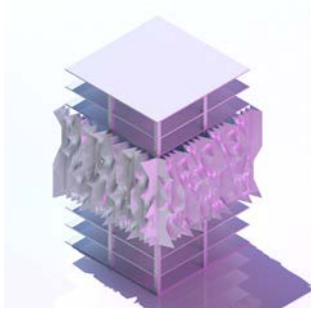


Draping



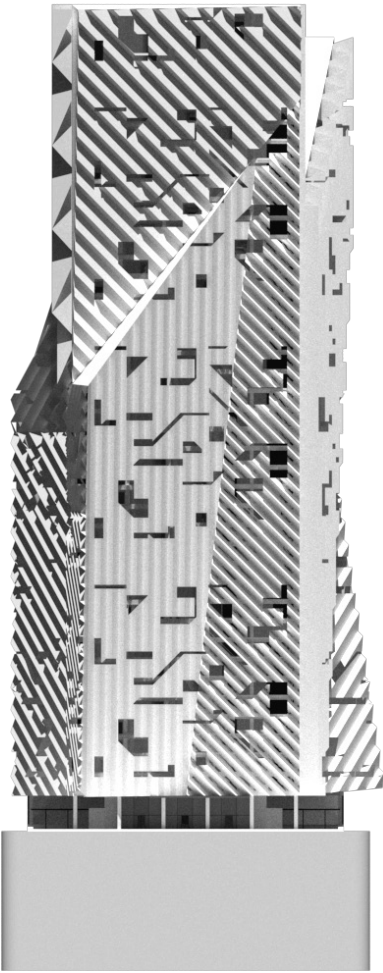
Composite Weave

+

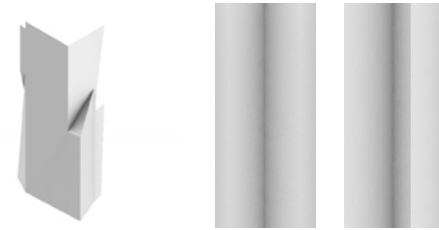


pleat, weave, drape

Proposal 1

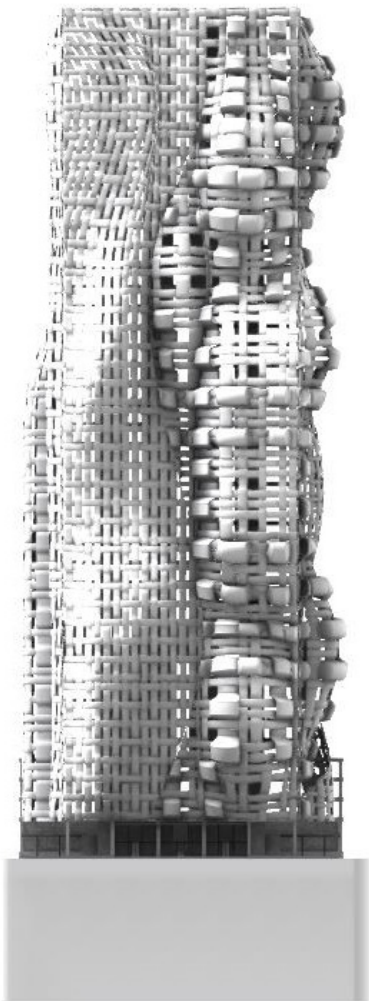


deconstructive transformation



pleat - accordion + knife

Proposal 2



asymmetrical deformation

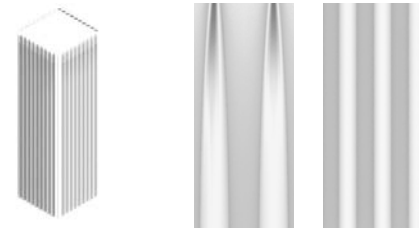


weave - twill + satin

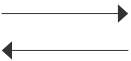
Proposal 3



functional transformation



drape - tailored pleat + ripple fold

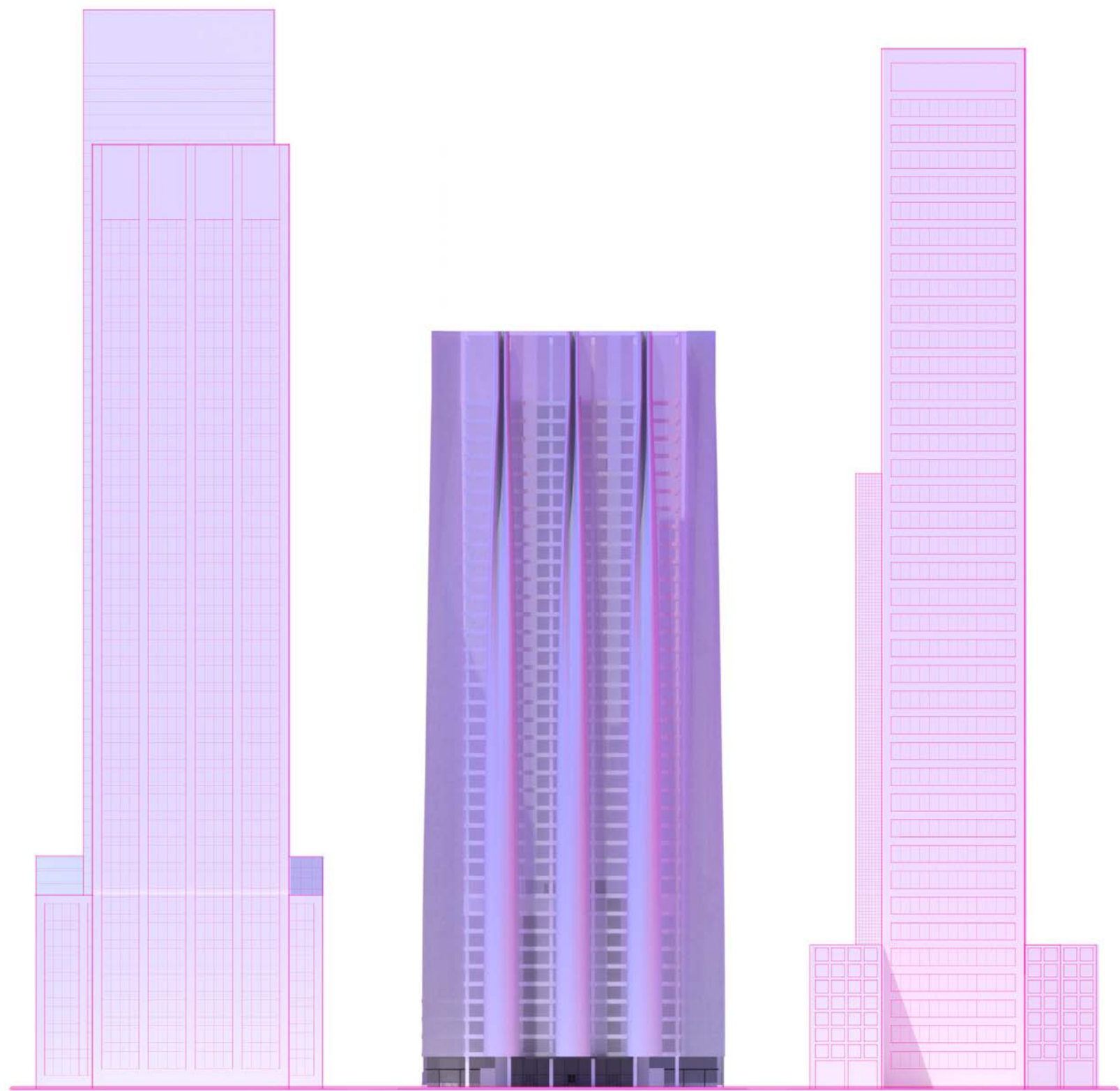


relate to environment



produce atmospheres

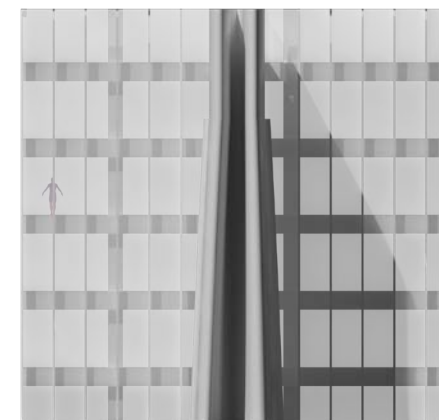
- Inhabitable spaces
- Interstitial spaces
- topological surface geometry
- Pattern & Textures
- Passive Shading
- Material Agency
- Material Effects
- Dynamic, Kinetic



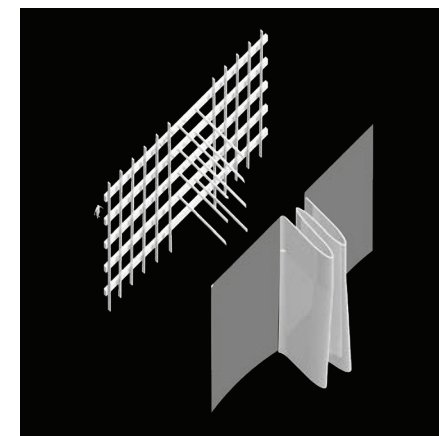
Drape + Functional Transformation



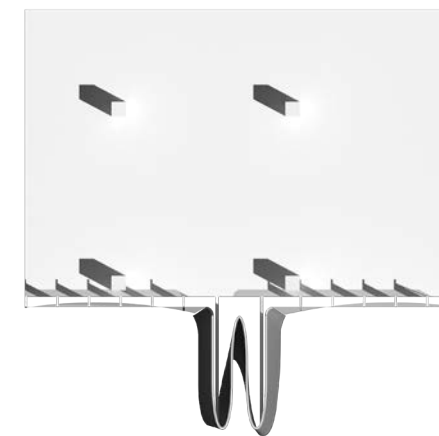
sectional perspective



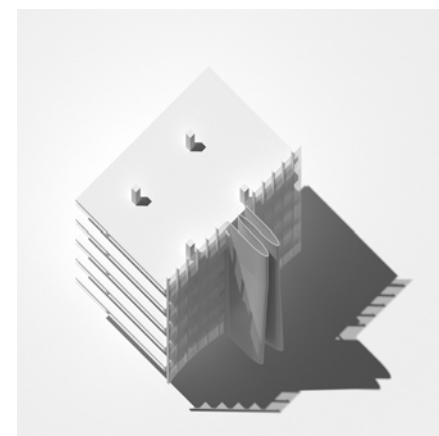
elevation



exploded facade axonometric



plan

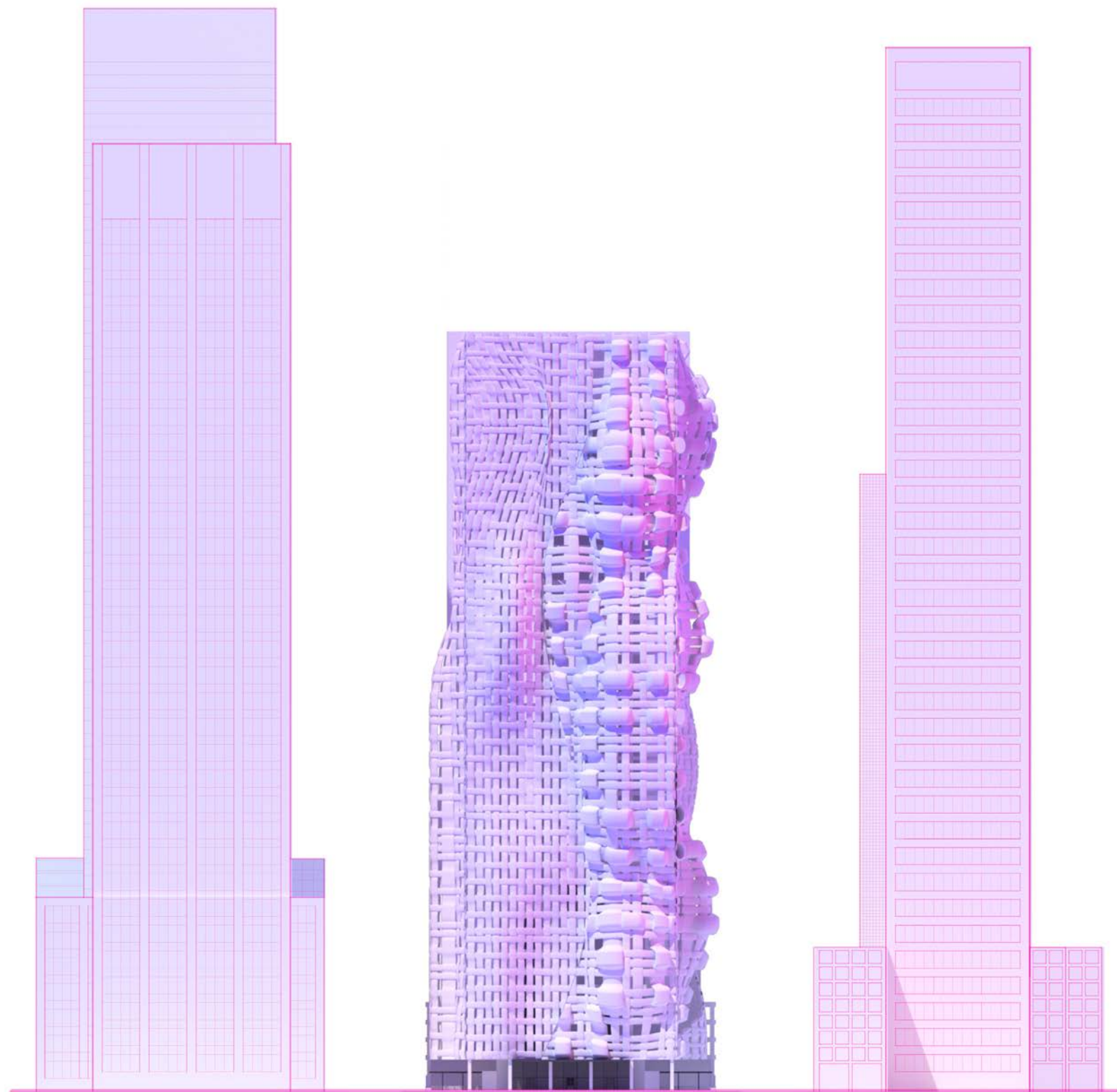


axonometric



section

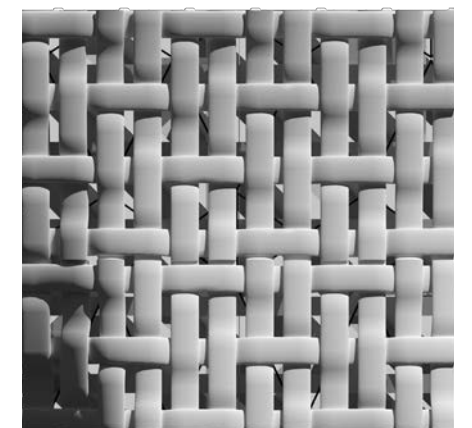
Chunk Model



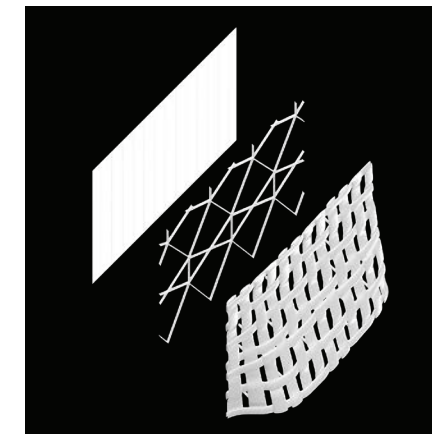
Weave + Asymmetrical Deformation



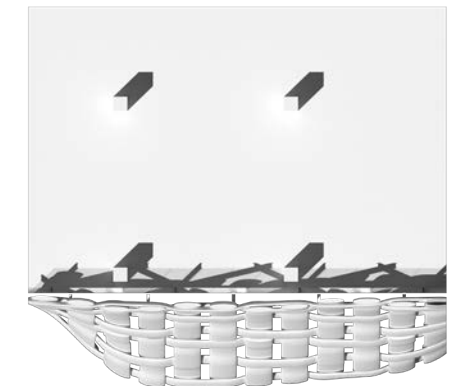
sectional perspective



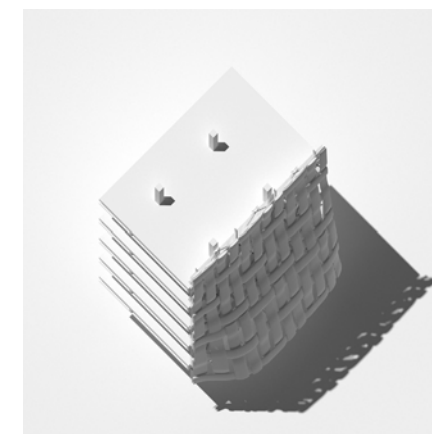
elevation



exploded facade axonometric



plan

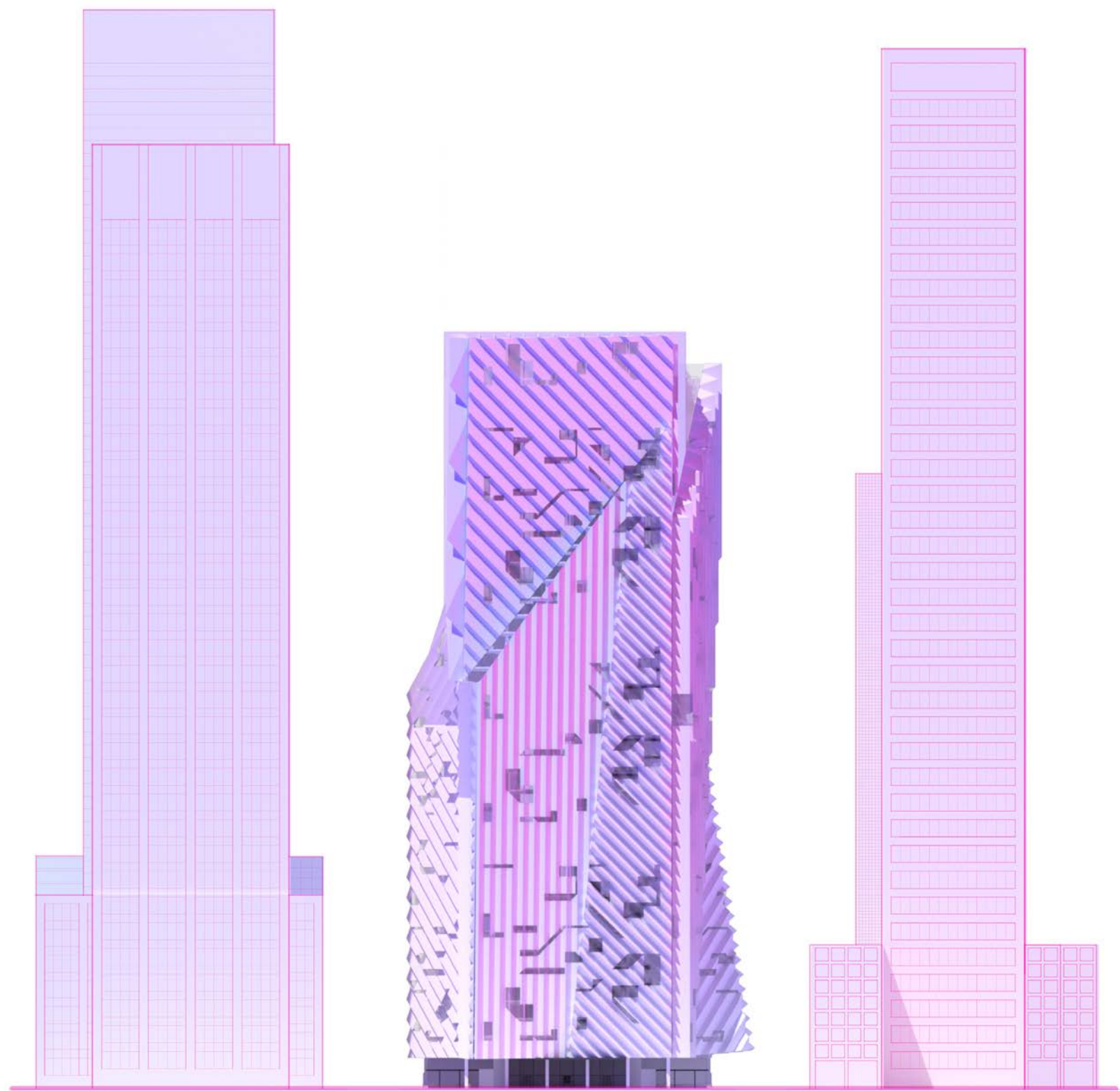


axonometric

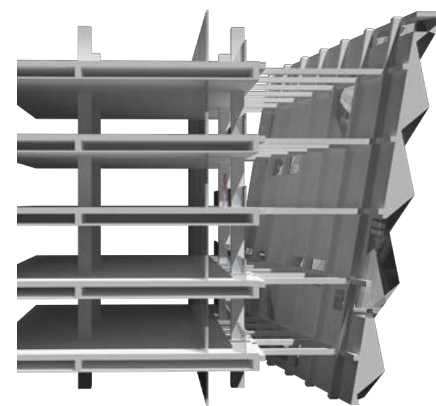


section

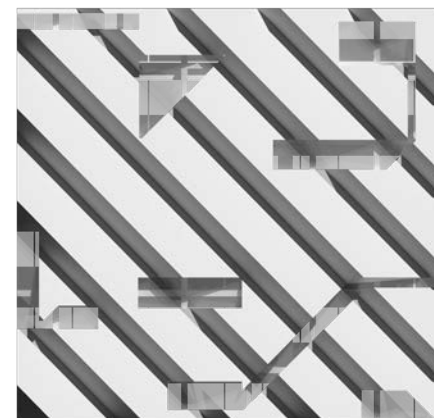
Chunk Model



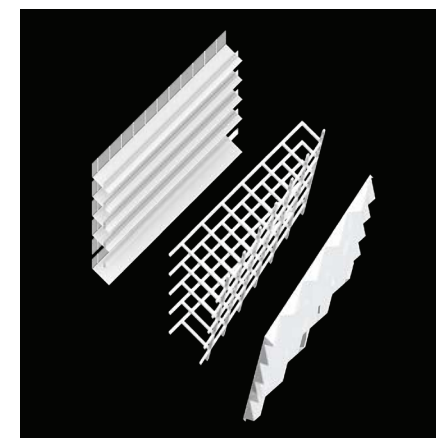
Pleat + Deconstructive Transformation



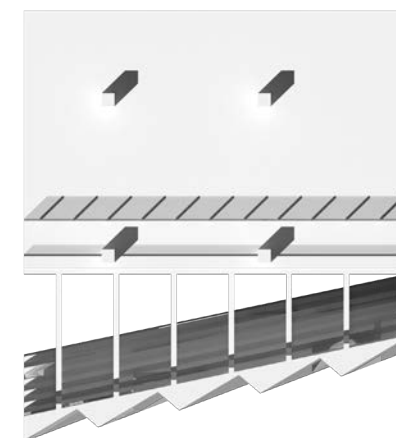
sectional perspective



elevation



exploded facade axonometric



plan

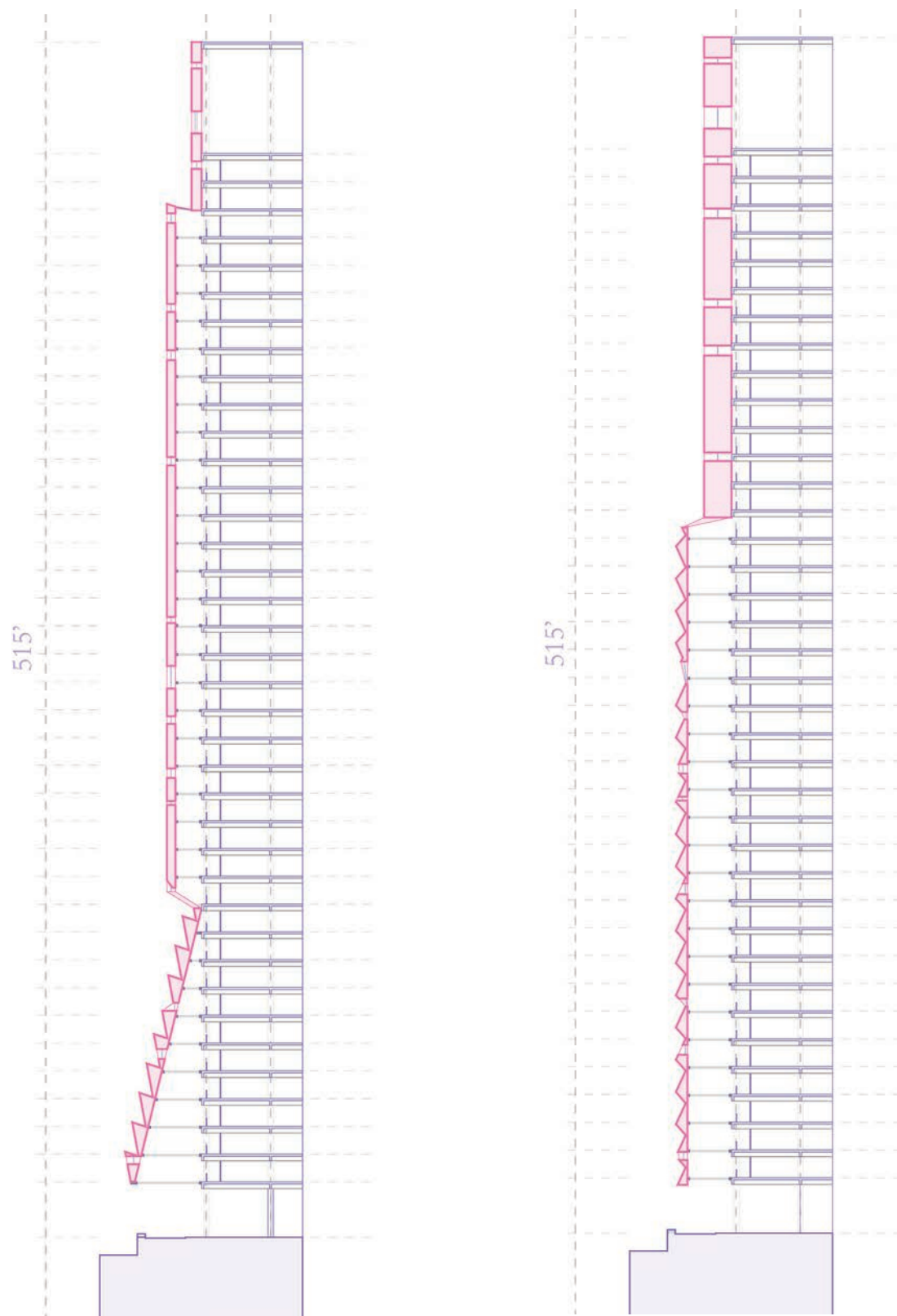


axonometric

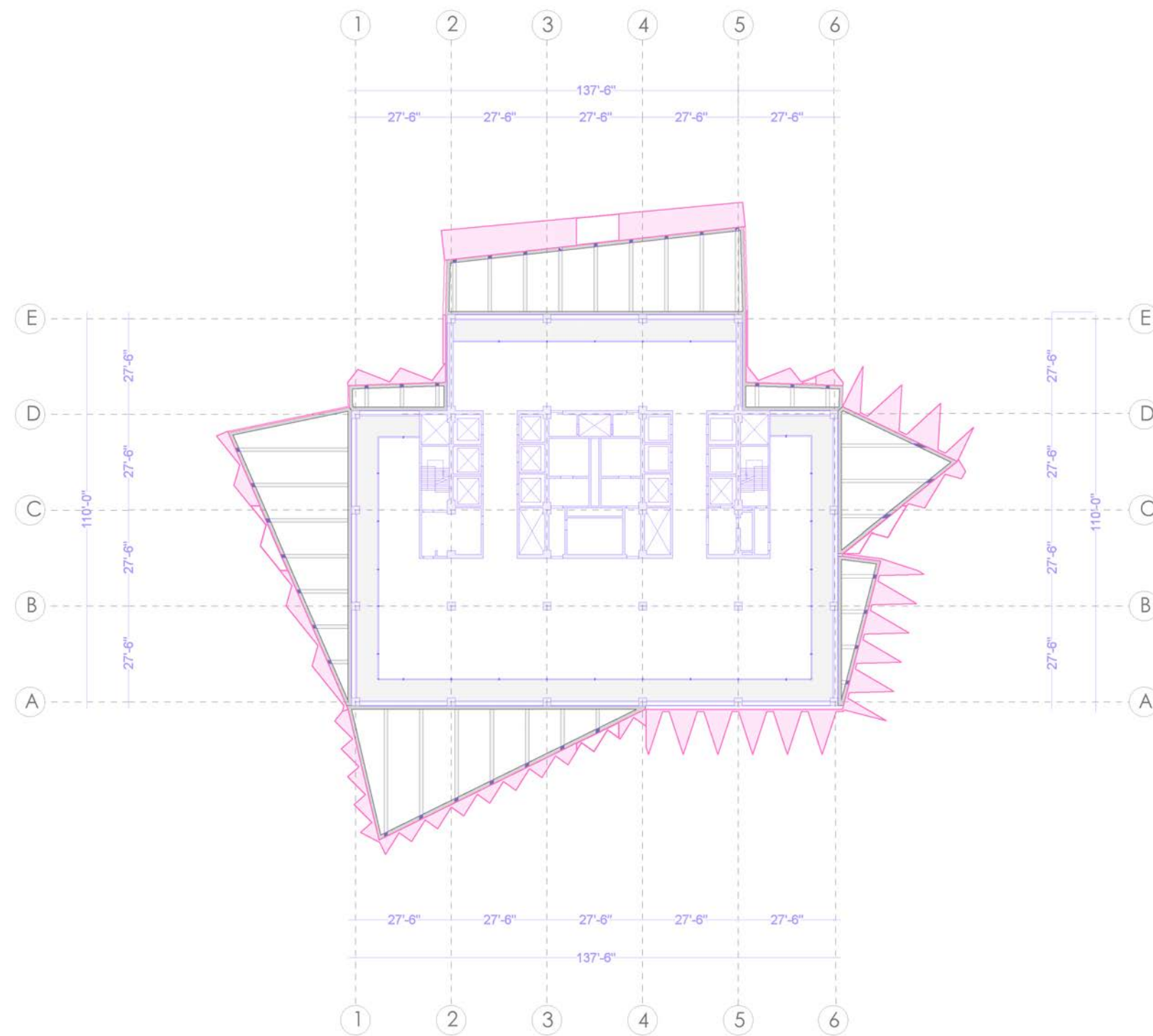


section

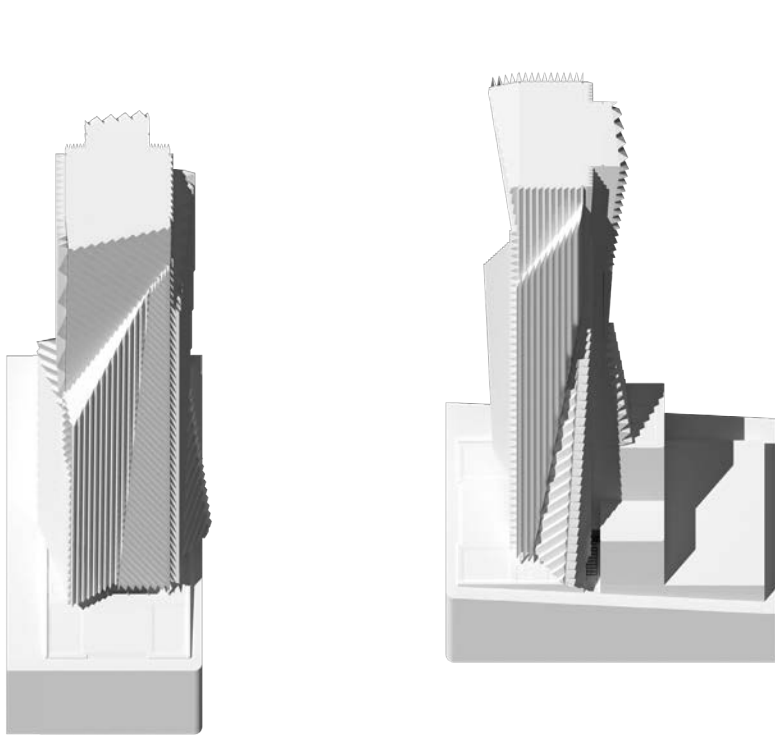
Chunk Model



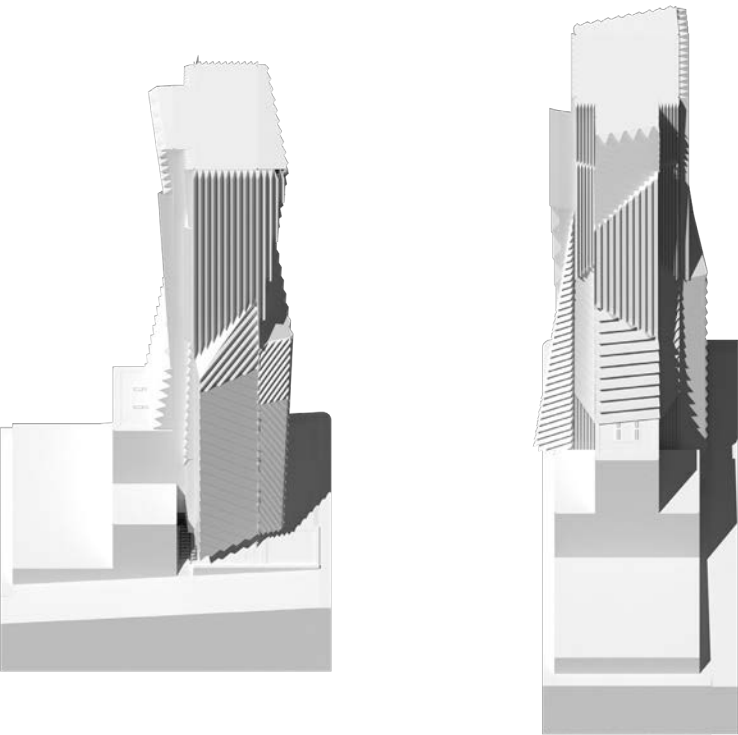
Skin Sections



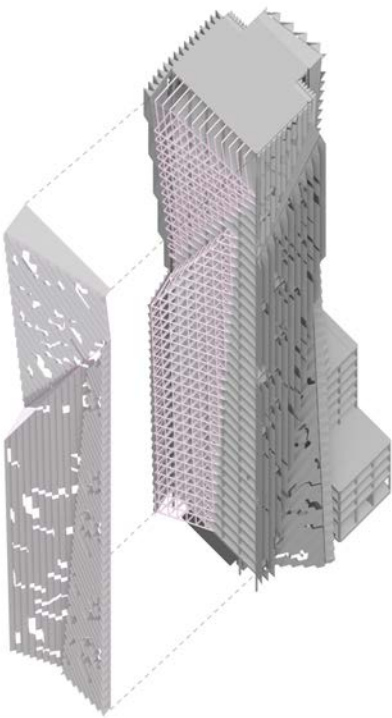
Floor Plan



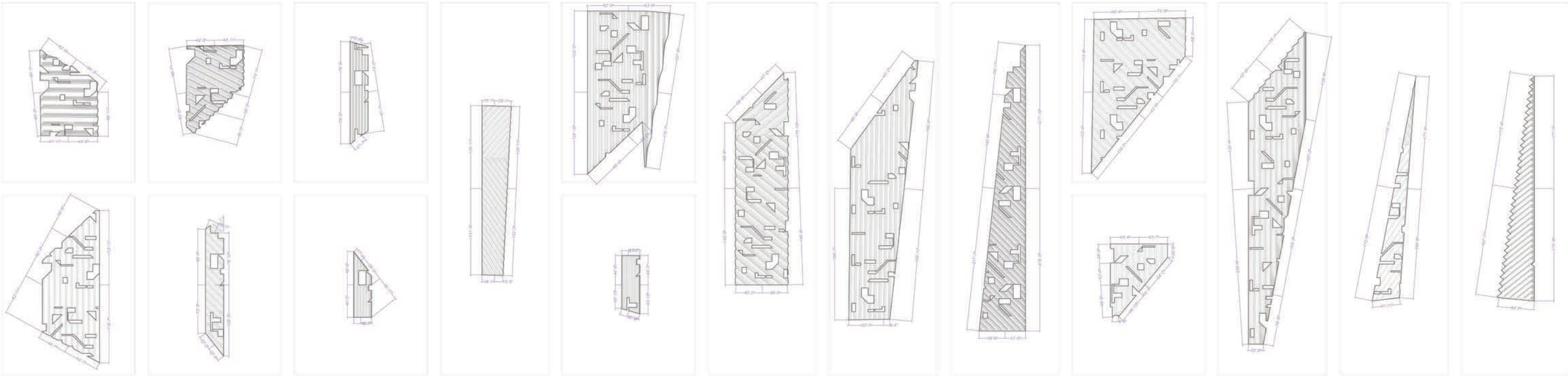
Front Elevation (West) and Side Elevation (South)



Side Elevation (North) and Back Elevation (East)



Exploded Structural Axonometric



PatternMaking



