

2 0 1 7 0 8

世界建筑

World Architecture

起点：建筑教育空间（2） | Where We Started: Spaces for Architectural Education (2)

世界建筑

2017 08 | 326

世界建筑 (月刊) 1980年10月创刊
World Architecture (Monthly) Founded in 1980

国内统一刊号/NATIONAL PUBLICATION NO.:
CN 11-1847/TU
国际标准刊号/INTERNATIONAL STANDARD PUBLICATION NO.:
ISSN 1002-4832

主管: 中华人民共和国教育部
主办: 清华大学
协办: 北京清华同衡规划设计研究院有限公司, 北京市建筑设计研究院有限公司

社长: 尹稚
副社长: 边兰春, 赵景昭

主编: 张利
副主编: 周榕
主编助理: 青锋, 范路

采编中心

主任: 叶扬, 项琳斐
副主任: 路培
编辑: 项琳斐, 叶扬, 路培, 辛梦瑶, 王欣欣, 天妮
客座编辑: 刘晨
编务部: 闫媛, 卢谦
本期责编: 天妮, 叶扬
本期特约英文审校: 刘亦师

运营中心

总监: 潘芳
广告部主任: 冯丙璋
行政部: 耿淑轩

ADMINISTRATOR: Ministry of Education of the PRC
SPONSOR: Tsinghua University
COOPERATION: Beijing Tsinghua Tongheng Urban Planning & Design Institute, Beijing Institute of Architectural Design Co., Ltd.

PRESIDENT: Yin Zhi
DEPUTY PRESIDENT: Bian Lanchun, Zhao Jingzhao

EDITOR-IN-CHIEF: Zhang Li
DEPUTY EDITOR-IN-CHIEF: Zhou Rong
ASSISTANT EDITOR-IN-CHIEF: Qing Feng, Fan Lu

EDITOR OFFICE

DIRECTOR: Ye Yang, Xiang Linfei
DEPUTY DIRECTOR: Lu Pei
EDITOR: Xiang Linfei, Ye Yang, Lu Pei, Xin Mengyao, Wang Xinxin, Tian Ni
GUEST EDITOR: Liu Chen
EDITORIAL ASSISTANT: Yan Yuan, Lu Qian
EXECUTIVE EDITOR: Tian Ni, Ye Yang
ENGLISH PROOF READER: Liu Yishi

OPERATION OFFICE

DIRECTOR: Pan Fang
DIRECTOR OF ADVERTISING DEPT.: Feng Bingzhang
ADMINISTRATIVE DEPT.: Geng Shuxuan

出版: 世界建筑杂志社
出版日期: 2017年8月18日
地址: 北京清华大学建筑学院建筑馆北208
邮编: 100084
电话: 010-62785799/62781318
传真: 010-62770780
电子信箱: wamp@tsinghua.edu.cn

世界建筑网站: <http://www.wamp.com.cn>
微博: <http://weibo.com/wamp>
豆瓣小站: <http://site.douban.com/wamp/>
微信公众平台: 世界建筑 或 WA_magazine

国内发行: 北京市报刊发行局

订阅: 全国各地邮局
邮发代号: 2-191
发行部电话: 010-62788125/传真: 010-62770780
广告部电话: 010-62788125/传真: 010-62770780
广告许可证: 京海工商广字第0081号
广告代理: 北京国龙时代广告有限公司

定价: 36元 (中国大陆), 36美元 (海外空运)
开户银行: 招商银行北京清华园支行
户名: 北京清大卓策文化传播有限公司
账号: 110921762010902

PUBLISHER: World Architecture Magazine Publications
PUBLISHING DATE: 2017.8.18
ADDRESS: Editorial Office of World Architecture, N-208, School of Architecture, Tsinghua University, Beijing 100084, China
TEL: +86 10 62785799/62781318
FAX: +86 10 62770780
EMAIL: wamp@tsinghua.edu.cn

WEBSITE: <http://www.wamp.com.cn>
MICRO-BLOG: <http://weibo.com/wamp>
DOUBAN SITE: <http://site.douban.com/wamp/>
WEIXIN(WECHAT) PUBLIC ACCOUNT: WA_magazine

SUBSCRIPTION

TEL: +86 10 62788125/FAX: +86 10 62770780
NATIONAL CIRCULATION BUREAU: Beijing Periodical Distribution Bureau
NATIONAL CIRCULATION CODE: 2-191
RATES: ¥ 36 (CHINA), US\$ 36 (OVERSEA)

ADVERTISING

TEL: +86 10 62788125/FAX: +86 10 62770780

©2017, World Architecture Magazine Publications All rights reserved. No part of this publication may be reproduced or published without the permission in writing of the publisher.

编委会

编委会主任: 庄惟敏
编委会委员 (以姓氏笔画为序): 马岩松, 马清运, 王方戟, 王昀, 王建国, 王辉, 王路, 支文军, 孔宇航, 朱小地, 朱文一, 朱锴, 朱颖心, 伍江, 华黎, 庄葵, 刘克成, 刘晓都, 刘家琨, 齐欣, 孙一民, 李东, 李兴钢, 李虎, 李海东, 吴耀东, 余加, 沈磊, 张永和, 张利, 张轲, 张桦, 张颀, 张雷, 陈刚, 邵韦平, 范雪, 周畅, 周恺, 周榕, 单军, 孟建民, 孟岩, 胡越, 查金荣, 倪阳, 徐全胜, 黄居正, 黄艳, 梅洪元, 龚恺, 崔彤, 崔愷, 梁井宇, 葛家琪, 董卫, 董丹申, 董功, 曾坚, 赖德霖, Bruce Abbey, Jürgen Rosemann, Peter Rowe, Luca Molinari

协办机构

清华大学建筑设计研究院
浙江大学建筑设计研究院
Urbanus都市实践建筑设计事务所
CCDI悉地国际
启迪设计集团股份有限公司
华通设计顾问工程有限公司

版权声明: 本刊所有文章和图片均有版权, 未经书面许可不得以任何形式转载。本刊有权编汇作品内容、授权所刊内容收入国内外文献索引、文摘、全文数据库和出版网站, 具有信息网络传播权、数字出版权。如有异议, 请来稿时声明。本刊所使用方正字体经北京北大方正电子有限公司授权许可。

EDITORIAL COMMITTEE

DIRECTOR: Zhuang Weimin
MEMBERS (In alphabetical order): Bruce Abbey, Chen Gang, Cui Kai, Cui Tong, Dong Danshen, Dong Gong, Dong Wei, Fan Xue, Ge Jiaqi, Gong Kai, Hu Yue, Hua Li, Huang Juzheng, Huang Yan, Kong Yuhang, Lai Delin, Li Dong, Li Hu, Li Xiaodong, Li Xinggang, Liang Jingyu, Liu Jiakun, Liu Kecheng, Liu Xiaodu, Ma Qingyun, Ma Yansong, Mei Hongyuan, Meng Jianmin, Meng Yan, Luca Molinari, Ni Yang, Qi Xin, Jürgen Rosemann, Peter Rowe, Shan Jun, Shao Weiping, Shen Lei, Sun Yimin, Wang Fangji, Wang Hui, Wang Jianguo, Wang Lu, Wang Yun, Wu Yaodong, Wu Jiang, Xu Quansheng, Yu Jia, Zeng Jian, Zha Jinrong, Zhang Hua, Zhang Ke, Zhang Lei, Zhang Li, Zhang Qi, Zhang Yonghe, Zhi Wenjun, Zhou Chang, Zhou Kai, Zhou Rong, Zhu Pei, Zhu Wenyi, Zhu Xiaodi, Zhu Yingxin, Zhuang Kui

COORDINATORS

Architectural Design and Research Institute of Tsinghua University
Architectural Design and Research Institute of Zhejiang University
Urbanus Architecture & Design
CCDI Group
Tus-Design Group Co., Ltd.
Walton Design & Consulting Engineering Co., Ltd.

简讯 8

起点：建筑教育空间（2）	10	和马叮	西方大学建筑教育空间概述——类型与室内组织
	20	纳德·特拉尼	氛围、场景与学习空间浅析
	30	天妮	卡斯·卡恩访谈
	36	MVRDV建筑设计事务所	代尔夫特理工大学讲堂
	38	查尔斯·艾伦·肖特	剑桥大学斯寇普坪，在奥特朗托城堡的闪亮日子
	44	保罗·梅拉诺	都灵理工大学建筑与设计学院
	52	本诺·阿尔布雷希特	威尼斯建筑大学
	62	迈克尔·斯皮克斯，王飞	雪城大学：重组斯洛库姆楼的基因
	72	大都会建筑事务所	康奈尔大学米尔斯坦楼
	82	黛博拉·伯克	耶鲁大学鲁道夫楼
	88	CRAB建筑事务所	邦德大学阿伯丁建筑学院
	98	约翰·沃德尔，NADAAA	墨尔本大学设计学院
	108	王军	游走于历史和现实之间——华沙理工大学建筑学院的教育与空间特色
	112	王勤，胡安·古娄斯·比拉，路易斯·布拉博·法雷	ETSAB与ETSABV——加泰罗尼亚理工大学双子建筑学院的空间演变及特质浅析
建筑文化	117	徐怡芳，王健	广东开平碉楼——舶来样式与传统工艺的碰撞
	120	宋健健，李振宇	极少主义在葡萄牙当代独户住宅中的呈现
建筑评论	124	郭龙	价值、阐释与真实：五龙庙环境整治项目思考
特别报道	128	吕舟，史晨暄，孙燕，吕宁，徐桐	第41届世界遗产委员会会议热点观察
改进建筑60秒	130	迈克尔·斯皮克斯，米凯利·博尼诺	
读书	131		
本期作者	132		
工程实录	134	清华大学建筑设计研究院有限公司	东北大学文科2楼

封面图片：和马叮

封底图片：伯纳德·屈米

	8	WA Briefs
Martijn de Geus Review of Spaces for Architectural Education in Western Universities: Typologies and Interior Organization	10	Where We Started: Spaces for Architectural Education (2)
Nader Tehrani Ambiance, Mise en scène, and the Space of Learning: An Abbreviated Account	20	
TIAN Ni Interview with Kees Kaan	30	
MVRDV The Why Factory Tribune, Delfte University of Technology	36	
C. Alan Short Scroope Terrace of Cambridge University, a Latter Day Castle of Otranto	38	
Paolo Mellano The Department of Architecture and Design of the Politecnico di Torino	44	
Benno Albrecht Università Iuav di Venezia	52	
Michael Speaks, WANG Fei Syracuse University: Reweaving the DNA of Slocum Hall	62	
OMA Milstein Hall of Cornell University	72	
Deborah Berke Rudolph Hall at Yale University	82	
CRAB Studio Abedian School of Architecture at Bond University	88	
John Wardle, NADAAA School of Design at the University of Melbourne	98	
WANG Jun As a Bridge of Future and the Past: the Education and the Architectural Space of the Faculty Architecture in Warsaw University of Technology	108	
WANG Qin, Joan Curós Vilà, Lluís Bravo Farré ETSAB and ETSAV, Brief Analysis on The Spatial Evolution and Characteristics of the Brother Architectural Schools of Polytechnic University of Catalonia	112	
XU Yifang, WANG Jian Guangdong Kaiping Towers: Collision Between Imported Styles and Traditional Crafts	117	Culture
SONG Jianjian, LI Zhenyu Minimalism in Portuguese Contemporary Single-family Housing	120	
GUO Long Value, Interpretation and Authenticity: Reflection on the Event of Environmental Improvement of Five-Dragon Temple	124	Architectural Review
LYU Zhou, SHI Chenxuan, SUN Yan, LYU Ning, XU Tong The Observation on the 41st Session of World Heritage Committee	128	Special Report
Michael Speaks, Michele Bonino	130	Sixty Second Idea to Improve Architecture
	131	Books
	132	Contributors
Architectural Design & Research Institute of Tsinghua University Co., Ltd. Liberal Arts Building No.2, Northeastern University	134	Project in Reality
Cover Drawing: Martijn de Geus Back Cover Drawing: Bernard Tschumi		

雪城大学：重组斯洛库姆楼的基因

Syracuse University: Reweaving the DNA of Slocum Hall

迈克尔·斯皮克斯，王飞/Michael Speaks, WANG Fei

摘要：斯洛库姆楼由雪城大学的建筑教授费德里克·W·里弗斯和厄尔·哈伦贝克设计，建于1919年，最初的建筑系和后来的建筑学院一直位于此处。100多年以后，随着教学分支在佛罗伦萨、伦敦和纽约市成立，雪城大学建筑学院真正成为了国际化的21世纪教育机构。庄严肃穆、受现代主义影响、文艺复兴风格的斯洛库姆楼，被认为是世界上最好的建筑学院之一。随着数字平台的发展，我们借用互联网扩大国家和国际影响力，如发布师生的教学信息及活动讲座的播报，斯洛库姆楼一直处在我们为世界提供一流的建筑教育使命的中心。今天，它为我们的学生和教职员工提供场所，也激励着我们，从近百年前起就一如既往。

Abstract: Designed by Syracuse Architecture Professors Frederick W. Revels and Earl Hallenbeck, Slocum Hall has been home to the Department of Architecture, which later became the School of Architecture, since its completion in 1919. More than 100 years later, with studio facilities in Florence, London and New York City, the Syracuse University School of Architecture is a truly international, 21st Century educational institution. And yet, the handsome, modernist-inflected, Renaissance Beaux Arts home that we call Slocum Hall, remains the physical and spiritual home of what many regard as among the very best schools of architecture in the US and in the world. As we have expanded our national and international reach with new global campus locations and by using a variety of digital platforms – posting the work of our students and faculty, broadcasting our lectures and symposia – Slocum Hall has remained at the center of our mission to provide the best architecture education in the world. It houses and inspires our students, faculty and staff today just as it did nearly one hundred years ago.

关键词：斯洛库姆楼，文艺复兴风格的艺术，现代主义影响，史蒂夫·艾恩霍恩，詹姆斯·盖里森

Keywords: Slocum Hall, Renaissance Beaux Arts, modernist-inflected, Steve Einhorn, James Garrison

斯洛库姆楼由雪城大学的建筑教授费德里克·W·里弗斯和厄尔·哈伦贝克设计，建于1919年，最初的建筑系和后来的建筑学院一直位于此处。值得一提的是，斯洛库姆楼后来的历次修缮都是由学院教师或毕业生完成的。1976年，时任院长魏尔纳·塞利格曼教授主持了斯洛库姆楼的修缮设计，提升了空间组织的清晰度，并在此过程中添加了新的功能空间，包括建筑阅览室和行政办公室。实际上，这次修缮是第一次重要的努力，将斯洛库姆楼从一座大学建筑——从1919年起就由诸多学院和学位项目所占据，转变成专为建筑学院所设计的空间。塞利格曼的设计方案是一系列重要过程的开始，清除了过去几十年中往往并不成功的加建部分。而另一项更为全面的、真正让斯洛库姆楼发生转变的设计，是从1999年开始的，设计者是詹姆斯·盖里森领导的盖里森建筑事务所，他也是建筑学院的1976届毕业生。盖里森的设计施工花费了9年时间，在此期间学院还临时搬迁至雪城市中心的一座翻新

仓库中，这座建筑也是由建筑学院1971届毕业生理查德·格拉克曼设计的。2008年，建筑学院成为了斯洛库姆楼的唯一使用者。

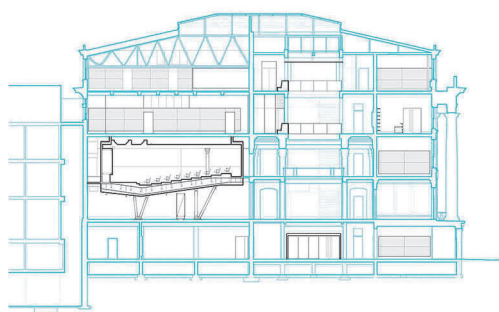
作为一栋优雅的花岗岩与石灰岩筑造的文艺复兴风格建筑，斯洛库姆楼在过去的数次修缮中丧失了很多关键的外部 and 内部特征，包括最重要的入口大台阶，以及大礼堂与中庭（图1、2）。盖里森的设计方案就是整理并移除建筑历次修缮过程中的加建部分，从而恢复原建筑的特征，包括自然通风、自然采光。盖里森的设计聚焦于清空中庭，并增添一个重要的空间，即悬挂在这个巨大的、失而复得的中庭上方的大礼堂（图3），而中庭下方则是一个开放平面，作为为期一学期的访问教授设计课工作室空间+展览空间。其他新增空间包括一个咖啡厅、一组院长办公室、一套学生服务办公室，以及一系列拥有会议及工作空间的教师办公室。后者同样很重要，因为它们提供了更高效和职业化的工作及会议场所。但它们相对于中庭、礼堂和底层的设计展



1 外景/Exterior view

作者单位：雪城大学建筑学院
收稿日期：2017-06-20

Designed by Syracuse Architecture Professors Frederick W. Revels and Earl Hallenbeck, Slocum Hall has been home to the Department of Architecture, which later became the School of Architecture, since its completion in 1919. Significantly, each of Slocum Hall's subsequent renovations have been designed by either professors or graduates of the school. Dean and Professor Werner Seligmann designed a renovation for Slocum Hall in 1976 that brought new spatial and organizational clarity, adding, in the process, new programmatic elements including an architectural reading room and administrative offices. Indeed, this renovation was the first significant effort to transform Slocum Hall from a university building, occupied since its completion in 1919 by many other schools and programs, into a purpose-designed space for the School of Architecture. While Seligmann's design proposal began the important process of stripping away the accretion of numerous and often ill-conceived additions executed over the years, a more comprehensive, and truly transformational design for Slocum Hall, commenced in 1999 with the selection of Garrison Architects, helmed by James Garrison, a 1976 graduate of the School of Architecture. Though the process to complete Garrison's design took some nine years and saw the school relocate, temporarily, to a renovated warehouse in downtown Syracuse



2

2 剖面/Section (图片来源/Source: http://www.garrisonarchitects.com/uploads/1200012/1495030908197/section_02_no_legend_900_374x341x1253x760_q85.jpg)
3 礼堂/Auditorium



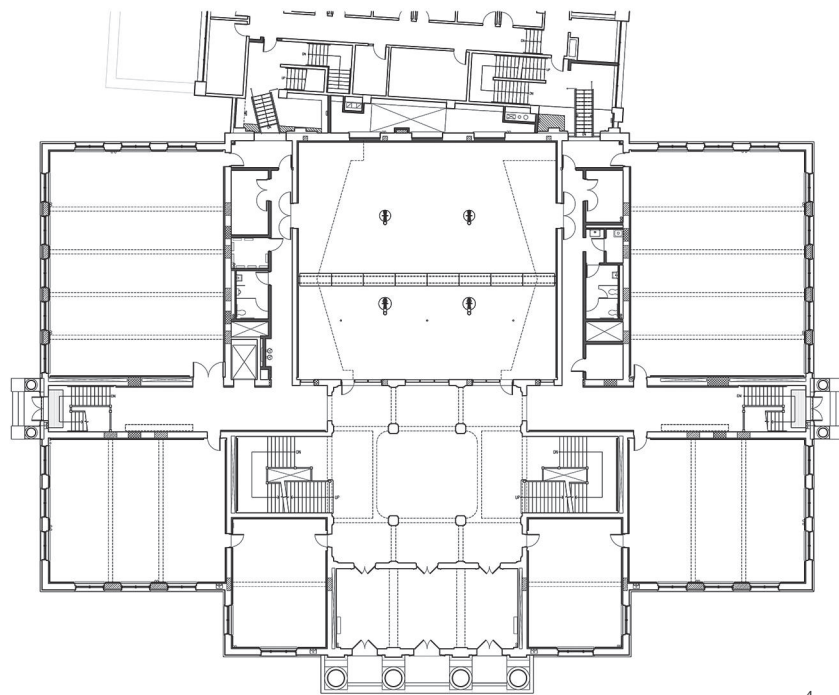
3

示空间来说依然是次要的,因为设计的首要雄心(在1976年塞利格曼的翻新工程中已有所暗示)是恢复原建筑的功能清晰度,同时为建筑学院创建一个家。盖里森同时实现了这两个目的,展现了杰出的建筑手法,使斯洛库姆楼看起来好像从一开始就是专为建筑学院而设计的(图4-7)。

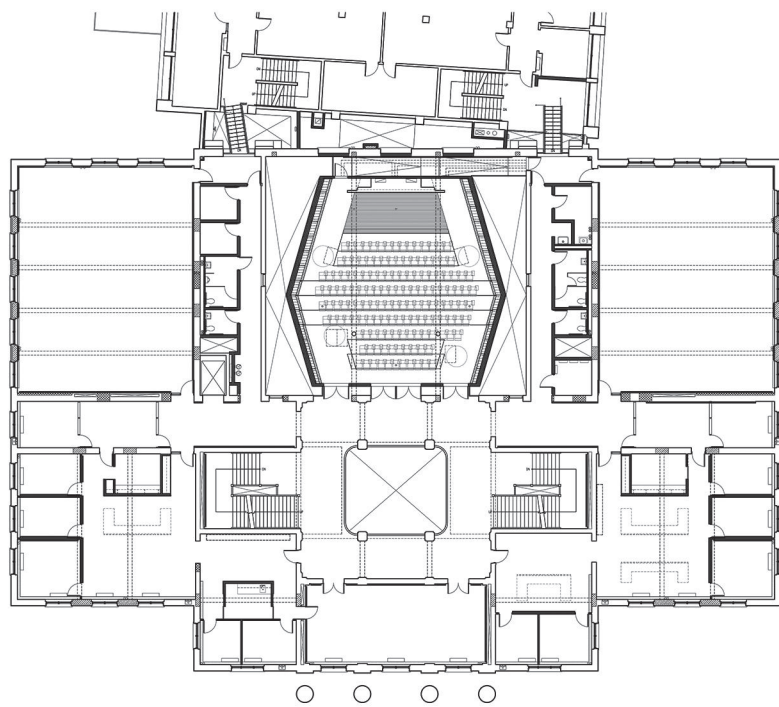
中庭的礼堂(图8-10)及访问教授设计课工作室+展览空间,如今也是全校公共活动的中心。本校的师生、行政人员,以及访客、未来的学生及家长,总是会被围绕中庭热闹上演的有组织或无组织活动而深深打动(图14、15)。在学年中,礼堂中紧凑安排了秋季和春季的系列讲座和课程。在其下方,特邀评图工作室可以容纳每学期的最多6组设计课,由世界各地的客座访问教授(图11、12、17)。在每年春季学期结束后,特邀评图工作室中会举办展览,例如本年度的全建筑学院教授群展。底层的中庭空间也成为了建筑中最活跃和繁忙的空间,时常举办讲座、研讨会、学生展览——例如今年的全院所有本科和研究生的毕业设计展“书架生活”。就连大理石厅——也就是在台阶被移除之前斯洛库姆楼的正式入口空间,如今也用于举办小型的更亲密的展览,例如教师个展、建筑学院伯格西安访问学者的作品展(图13)。

盖里森的修复设计主要针对中央的公共空间,而设计教室、图书馆和其他学习空间的改造才刚刚开始。2013年,“艾恩霍恩21世纪设计教室”刚刚完成。这个项目由建筑学院1967届毕业生史蒂夫·艾恩霍恩及其妻子、1967届雪城大学毕业生雪莉·艾恩霍恩慷慨捐助,由建筑学院副教授布莱恩·朗思威设计,是拥有可移动桌椅的开放空间,并配备了数字投影仪、扫描仪、3D打印机和其他设计制造工具。“艾恩霍恩21世纪设计教室”是一个原型,我们如今以它为范本来翻修斯洛库姆楼中所有其他设计教室(图16)。另外借助建筑学院2013届毕业生威尔·史塔特曼的慷慨捐助,我们大大更新了数字制造实验室,添加了新的空间和很多新的机器——包括3D打印机和激光雕刻机。我们最近刚购置了一台大型数控机床,并且在斯洛库姆楼的地下室打造一套全新的数字化制造设备,容纳这台机器和其他的自动机械手。今年我们还得到了拉塞尔·金的一份慷慨捐助,他是建筑学院1952届毕业生、也是雪城大学中多座建筑的设计者,我们才得以将斯洛库姆楼的阅览室改造为一座正式的图书馆。

由魏尔纳·塞利格曼开始、詹姆斯·盖里森延续



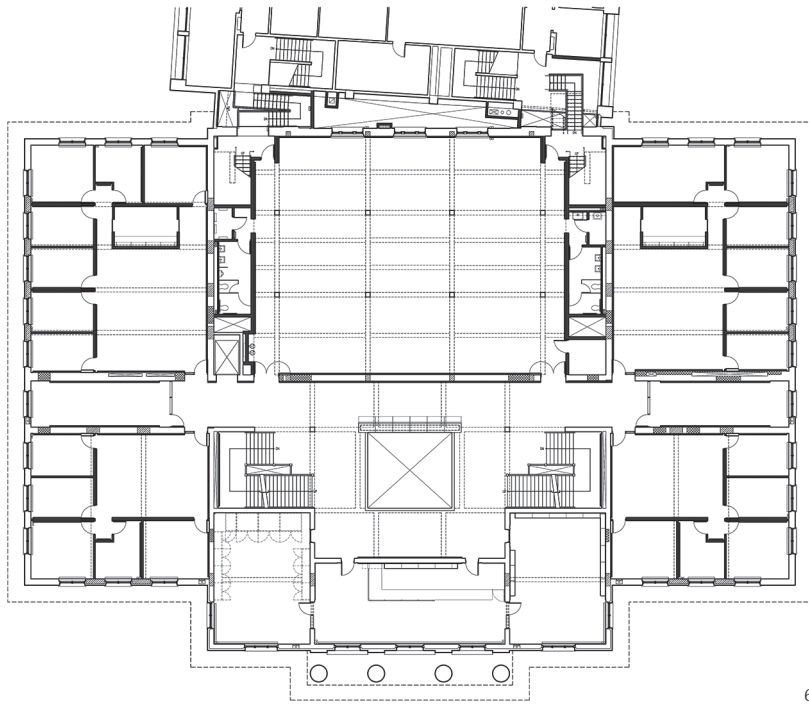
4



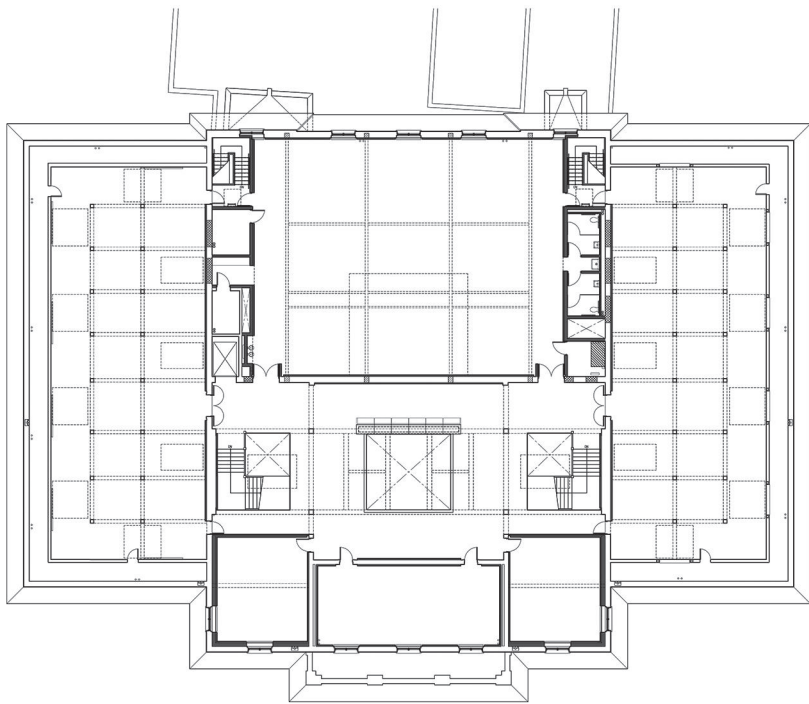
5

4 首层平面/Ground floor plan

5 二层平面/1st floor plan



6



7

designed by Richard Gluckman, a 1971 graduate of the School of Architecture, Slocum Hall was rededicated in 2008 as a single occupant building for the School of Architecture.

A handsome, granite-and-limestone Renaissance Beaux Arts edifice, Slocum Hall lost, in its many renovations over the years, several of its defining external and internal features, including, most significantly, its grand front entry stair, as well as its auditorium and central atrium (Fig. 1,2). Garrison's brief was to edit and remove the accumulated layers of building renovation and restore important features of the original building including, especially, natural air ventilation and natural light. Garrison focused their efforts on opening up the atrium and making one significant addition: a spectacular auditorium space hung in the upper cavity of an immense, reclaimed volume (Fig. 3), with an open-plan Visiting Critic Studio + Exhibition Space situated below, in the lower cavity of the volume. Other new features included a new café space, a new suite of offices for the dean, a suite of offices for student services, and a clutch of faculty offices with meeting and work spaces. These latter are important features that provided more efficient and professional work and meeting spaces. But they are secondary to the atrium and lecture hall and studio-exhibition space below in achieving the ambition (implicit in Seligmann's 1976 renovation) to both restore the clarity of purpose and function of the original building and create a home for the School of Architecture. Garrison achieved both and in so doing pulled off a remarkable architectural sleight-of-hand by making it seem as though Slocum Hall had been destined, from the beginning, to become the designated home of the School of Architecture (Fig. 4-7).

The atrium (Fig. 8-10), lecture hall and Visiting Critic Studio + Exhibition Space below are today the center of all school public activities. Faculty, students and administrators from our own campus as well as visitors and prospective students and their parents are always impressed with the buzz of organized and impromptu activities that occur in and around the atrium. Fall and spring lecture

6 三层平面/2nd floor plan

7 四层平面/3rd floor plan



8

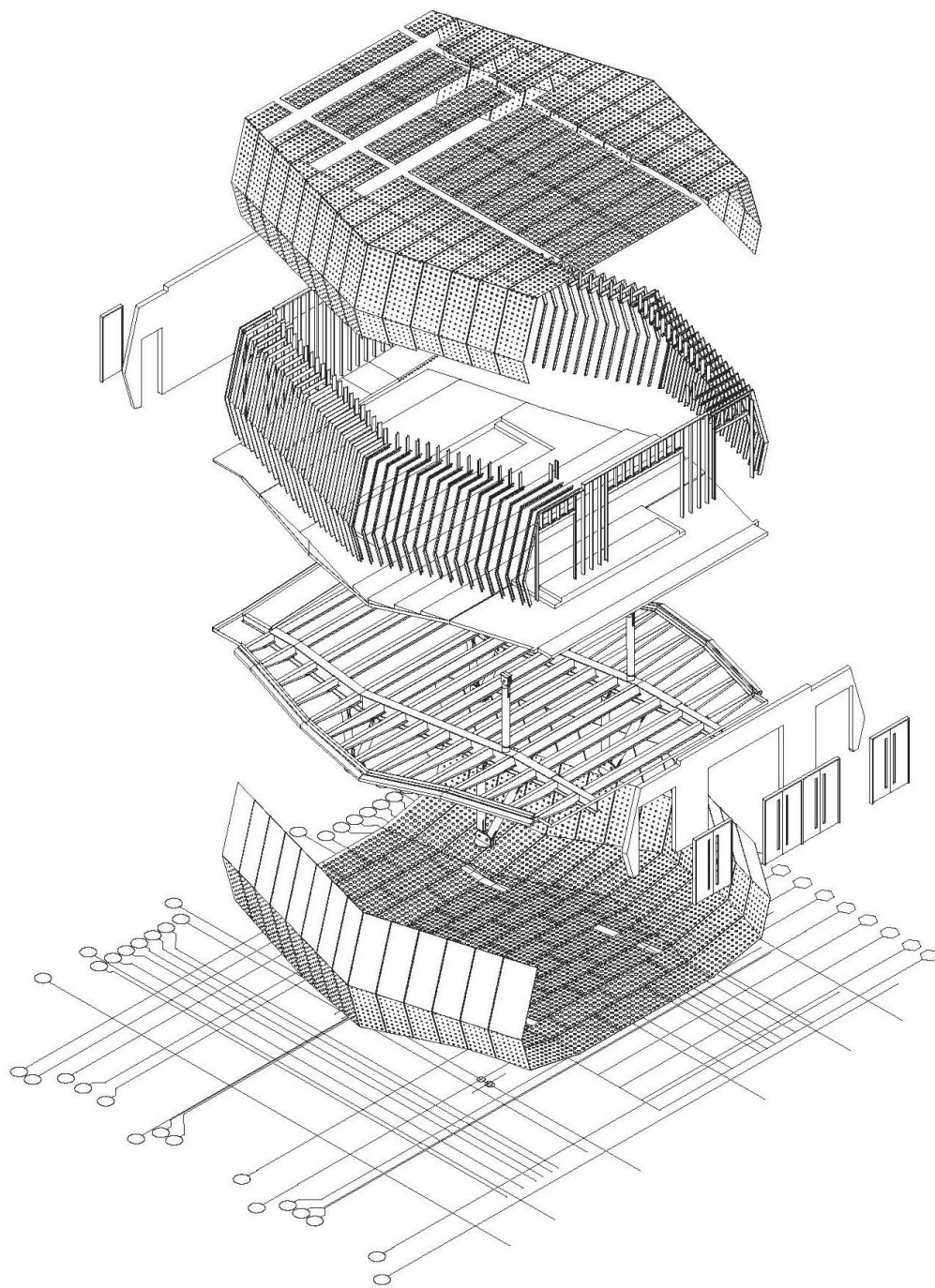


9

8.9 礼堂内景/Interior views of auditorium

的建筑修缮工作，让斯洛库姆楼成为了一座比最初设计时更好的建筑。此外，这些改造设计奠定了进一步扩建的框架，并为建筑学院的身份建构奠定了灵感和基因。2014年，我们雇佣了纽约的平面设计公司 Common Name 来设计学校的新官网和标识系统。他们并没有设计常见、通用式的单一标识，而是一系列图形和图案，使用两种外观及有限的色彩选择创造出一套标识系统，能够逐渐在不同媒介、不同场合和不同尺度中体验。建筑学院的标识系统就像斯洛库姆楼本身一样，必须通过不同、多样化

的视觉和触觉体验的累积才能完全感受和理解。标识系统的灵感直接提取自斯洛库姆楼、建筑中可以找到的图形，例如，以中庭（图 14、15、18-20）为核心的向心设计母题，以及盖里森的修缮设计中使用的重复圆及其他图形主题。如今，Common Name 设计的、源于斯洛库姆楼的文字及图案的标识系统，可以从建筑学院的手册、文具、海报、围巾、T 恤和手提袋，还有 Twitter、Instagram 和 Facebook 账号中看到，并且铭刻在斯洛库姆楼的建筑表面上（图 17、21、22）。



10 礼堂轴测/Auditorium axonometric

series and school courses pack the lecture hall during the academic year. Just below, Visiting Critic Studios provide space for up to six studios each semester, taught by visiting faculty instructors from around the world (Fig. 11, 12). At the end of the spring semester each year, the Visiting Critic Studio space also hosts exhibitions, such as this year's Faculty Show. The ground floor atrium space has also become among the most active and heavily programmed spaces in the building and features lectures, symposia, and student exhibitions, such as this year's student Thesis Exhibition, "Shelf Life." Even the Marble Room (Fig. 13), which was the formal entry to Slocum Hall before the stairs were removed, today serves as an exhibition space for smaller, more intimate subjects such individual faculty shows and the work of School of Architecture Boghosian Faculty Fellows (Fig. 14, 15).

While Garrison's renovation dealt primarily with the central public spaces, the transformation of studio, library and other learning spaces have only just recently commenced. In 2013, the Einhorn 21st Century Studio was completed (Fig. 16, 17). Funded by a generous gift from Steve Einhorn, a 1967 graduate of the School of Architecture, and his wife Sherry Einhorn, a 1967 graduate of Syracuse University, the studio space, which was designed by School of Architecture Associate Professor Brian Lonsway, features an open plan with non-fixed student desks, and is generously appointed with digital projectors, scanners, 3D printers and other work and fabrication tools. The Einhorn 21st Century Studio is a working prototype that we are currently using as a model to renovate all the studio spaces in Slocum Hall. In 2014, we also began to transform the fabrication facilities in Slocum Hall. With a generous gift from Will Stattman, a 2013 School of Architecture graduate, we have significantly upgraded our digital fabrication labs adding new space and many new machines, including 3D printers and laser cutters. We recently purchased a large-bed CNC machine and are in the process of completing a new digital fabrication facility in the basement of Slocum Hall to house



11

雪城大学建筑学院在佛罗伦萨、伦敦、纽约、即将在深圳都拥有设计教学分支，如今已成为一个极为国际化、属于 21 世纪的教育机构。然而，这座优雅的、受到现代主义影响的、文艺复兴风格的、我们所谓的斯洛库姆楼，位于美丽的雪城大学、建立于 1870 年的纽约州北部，依然是这座很多人眼中美国乃至全世界最杰出的建筑学院的实体和精神、字面及象形意义上的家园。当我们利用多种数字化平台在国内和国际层面不断拓展的同时——刊登学生和教师作品、直播讲座及研讨会、传播我们的价值和事业——斯洛库姆楼依然是我们追求世界最佳建筑教育之目标的核心阵地。今天它依然像近 100 年前那样，容纳并激励着我们的学生、教师和员工。□（黄华青译）

11.12 访问教授设计课工作室/Visiting Critic Studio
13 展览空间/Exhibition space



12



13



14



15

14 中庭/Atrium
15 院长论坛/Deans' discussion

this machine as well as several industrial robotic arms. This year we also received a generous gift from Russell King, a 1952 School of Architecture graduate, and architect of many buildings on the campus of Syracuse University, that will enable us to transform the Slocum Hall reading room into a formal library.

The building renovations commenced by Werner Seligmann and continued by Jim Garrison have made Slocum Hall a better building than was originally designed. In addition, these renovations have provided the framework for continued expansion as well as the inspiration and DNA for what has become the very identity of the School of Architecture. In 2014, we hired New York-based graphic design firm Common Name to design our new website and new school identity. Rather than designing a single logo that would be experienced all at once, in one take, as it were, Common Name designed instead an alphabet of shapes and patterns and used two type faces and a limited color palette to create an identity system that could only be understood when experienced over time through different media, in different situations, and at different scales. The School of Architecture identity, like Slocum Hall itself, is only fully appreciated and understood through the accumulation of many different and many different kinds visual and tactile experiences. The identity system was inspired by and extracted directly from Slocum Hall, from the shapes found in the original building, such as the atrium ground floor central design motif (Fig. 18-20), and in the repeating circles and other patterns deployed in the Garrison renovation. Today the Common Name designed identity, spun from literal and figural strands of Slocum Hall DNA, can be found on School of Architecture catalogues, stationary, posters, scarves, T-Shirts and tote bags, on Twitter, Instagram and Facebook accounts, and inscribed on the very surfaces of Slocum Hall itself (Fig. 21, 22).

With studio facilities in Florence, London and New York City, and soon to be in Shenzhen, the Syracuse University School of Architecture is today a truly international, 21st Century educational institution. And yet, the handsome, modernist-inflected, Renaissance Beaux Arts home that we call Slocum Hall, located on the beautiful



16



17

16 艾恩霍恩21世纪设计教室/Einhorn 21st Century Studio
17 访问教授设计课工作室/Visiting Critic Studio

campus of Syracuse University, founded in upstate New York in 1870, remains the physical and spiritual, the literal and figural, home of what many regard as among the very best schools of architecture in the US and in the world. As we have expanded our national and international reach using a variety of digital platforms – posting the work of our students and faculty, broadcasting our lectures and symposia, and communicating who we are and what we do – Slocum Hall has remained at the center of our mission to provide the best architecture education in the world. It houses and inspires our students, faculty and staff today just as it did nearly one hundred years ago. □

项目信息/Credits and Data

建筑设计/Architect: Garrison Architects

承包商/Contractor: Hayner Hoyt

工程师/Engineer: Ove Arup

副工程师/Associate Engineer: Peterson Engineering, PC

结构工程师/Structural Engineer: Klepper, Hahn & Hyatt

照明设计/Lighting Design: Cline Bettridge Bernstein Lighting Design

摄影/Photos: Steve Sartori (fig. 1), Garrison Architects (fig.

4-7, 10), David Joseph Photography (fig. 3, 8, 14, 18-20),

Michael Speaks (fig. 9, 11), Thomas Kim (fig. 12, 13, 15-17),

Common Name (fig. 21, 22)

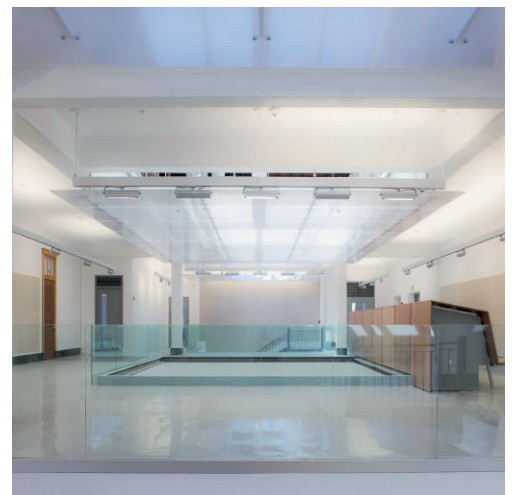


18

18 中庭/Atrium
 19 中庭四层/3rd floor of atrium
 20 中庭五层/4th floor of atrium
 21.22 手袋/Tote bags



19



20



21



22